



# The English Guernsey Cattle Society Newsletter

Michaelmas Cottage, Meadwell Farm, Kelly, Lifton, Devon, PL16 0HJ

Tel: 01822 870727 e-mail: [office@guernseycattle.com](mailto:office@guernseycattle.com) [www.guernseycattle.com](http://www.guernseycattle.com) Autumn 2016

Welcome to the Autumn Newsletter for 2016 and an update of the semen available to our members and customers together with a roundup of Society news prior to the Journal which you will receive just before Christmas. 2016 has proved to be a mixed year for all of us, some members reporting record crops and plenty of grass throughout the season, while others are really short of grass and expressing disappointment in their maize crops – such is the way with the fickle British climate.

The tiniest glimmer of hope in the depressed milk price may lessen the gloom that has hung over the dairy industry for what seems an eternity, I think all of us are desperate for some relief in that direction and the hope that the pile of unpaid bills will start to shrink in the near future. As always the Society is keen to help our members with very competitive prices for our semen, bonuses available for registration of calves within 60 days of birth and an understanding attitude towards payment, but I must emphasise that we would appreciate a responsible attitude from all of you, keeping on top of this as much as you can.

## AGM

The Society Annual General Meeting was held on the 7th and 8th September and, considering the pressures that all of us are living under, it proved a very enjoyable couple of days for which we all express our thanks to Maurice and May Durbin and their family and staff. On the first day 30 members gathered at Thatchers Cider Farm in Sandford, where we enjoyed a very interesting tour of the site, excellent refreshments and the sampling of 5 ciders (taking care not

to over indulge, especially those of us who were driving, although some did admit to feeling a little “tired.” We took our refreshments in “Stan’s Barn” and rather alarmingly, as a little girl, I can well remember Stan Thatcher, I can also remember spending sometime as a member of Weston Young Farmers Club in The Railway Inn (which Thatchers have recently purchased and where we all met up for Tea and Coffee) – how much it has changed and how old I must be getting.

All thoughts of tiredness were quickly forgotten as we travelled to Dundry, near Bristol to visit the Graylands herd of the Parfitt family. By now our numbers had swelled to nearly 50 members and friends who had gathered to sample some of the delicious ice creams that Suzanne Hobbs (Colin’s grand daughter) and the family have launched under the name of Chew Moos Ice Cream – the business is growing fast in all sorts of directions and we congratulate them all on their entrepreneurship. Chew Moos will be selling their Ice Cream on the Society Stand at the SW Dairy Show – see the last paragraph.

An excellent Dinner was held in the evening at The Wellsway Inn, West Harptree where we returned the next day for Lunch followed by The Presentation of Trophies and The Annual General Meeting. In between over 60 members had gathered at Bickfield Farm where Maurice and the family had planned an extensive herd visit – our thanks to them all for their time and generosity.

## HERD COMPETITION RESULTS

The results of one of the Herd Competitions could not be announced at the AGM as they were only made

public the following week at the UK Dairy Day – The Alec Steele Perpetual Challenge Trophy awarded to the winning cow in the Genus Long Life Cow Competition 2016;

The Winner was Bickfield Pride 13 born 10.03.99 and the Reserve went to Beechgroves Evita born 29.09.01 – congratulations to the cows and their owners – the Cup, prize cards and rosettes will be awarded at the next Council meeting on the 1st November.

Our Chairman in 2017 will be Colin Glead, who in spite of not actually being a herd owner has given so much over his entire adult life to this Society that it is entirely fitting that he is honoured by being Society President. I hope you will all support him throughout the year and it would be wonderful to see the sort of turnout of members that we saw this year in Bucks next year. Congratulations also to Andrew Payling who as President Elect will take up the mantle of President in 2017 – 2018.

## SEMEN FOR SALE

And now back to one of the principle purposes of this Newsletter – to keep you informed of the semen available to purchase. I have featured again the 2 American bulls from which we have sexed semen available – Coulee Crest Fame Latimer and Paoki Lil Ernie, semen priced at £28.50 per straw, subsidised to £27.50 per straw for Levy members. Unfortunately we are restricted to supplying sexed semen from bulls from the USA only, although there is a possibility that we may be able to collect sexed semen from Mainland bulls at some stage in the future, which would be wonderful for our breed, so watch this space, as they say. We also have

conventional semen available from Marodore Gary Pistoll, this bull is by Golden J Skipper Gary who was not granted an EU Export license, so he may prove a useful outcross for many of you.

Our new Mainland bull that we have just launched is Trewey Junos Legend, sired by Coulee Crest Grumpy Legend, which many of you will have used to good effect and out of the Manns' excellent Juno family. Legend brings with him very positive scores throughout, notably a Mammary score of 2.1 including good scores for udder height, attachment and teat placement – all essential for a cow that is going to last. Add to that the three generations of EX/VG classification of the Juno family and their consistent production figures, the potential is there for some fine breeding.

In the light of the falling constituent figures in American bulls, the Society intend to begin a programme of collecting from Mainland bulls that more accurately fits the demands of the EGCS member and at the same time reduces the growing cost of importing semen. You will therefore see an increasing number of Mainland bulls becoming available as follows:

**Briddlesford Foxgloves James** (by Tredinney Yogis Prince) should be going on Centre on the 10th October.

**Bourton Grumpys Claude** and **Tredinney Ivans Flo Rider** (by Island Sire Les Jaonnets Iris Ivan) both so long tied up by TB restrictions, will be collected on farm at the end of October.

We plan to collect from Trewey Victor Ezekiel on Centre after the New Year.

Therefore a range of semen from bulls with excellent sires and out of good cows becomes available well into 2017. Please plan your requirements in good time, the Society is only too pleased to help you, its members, with any requirements and queries you may have.

Talking of bulls, at this time there are a range of well bred bulls FOR SALE within the breed.

## BULLS FOR SALE

**Briddlesford Bluebells Leopold** – DOB 23.11.12 – A2/A2 – Now a mature bull he is the first Levi son to have gone on Centre and his semen has sold very well throughout the world. There are 2 generations of EX/VG on his Dam's side and he has maintained an excellent GMI+20F of 202. Plenty of work left in him, please contact David Mann (Cornwall) on 01736 796443

**Trewey Dollar** – DOB 05.10.15 – A2/A2 – a young Ezekiel son with a GMI+20F of 175 out of the Mann's Penny family with breeding going back to Rutter Bros Options Lamar and Sunninghill Park Royal Oak. Notable traits – Milk 252 kgs, Mammary 1.1 and Fertility +1.0 Contact David Mann on 01736 796443.

**Beechgroves King Endeavour** – 04.06.14 – A1/A2 – One of the few bulls that have been kept of Tredinney Prince Lion King out of the Lacey's leading cow family, Elinor 13 (EX92) with 3 generations of EX/VG behind her. Add in the longevity and consistency of the Elinor line and a GMI of 163. Notable traits BF - +0.06, Protein +0.05 and Fertility +0.2. Contact Gideon Lacey (High Wycombe) on 07720 266906.

**Briddlesford Violets Andrew** – DOB 01.10.14 – A2/A2 – A bull now more suited to yard work by Trewarnevas Ivor out of Briddlesford Oaks Violet (EX 90) with breeding on the Dam side going back to Flambeau Manor Tiller Loren and Jensgolden Proking Royal Oak. Substantial milk figure of 329 kgs and Fertility of -0.1. Contact Matt Blanch (West Sussex) on 07788 724525.

**Briddlesford Foxgloves James** – DOB 11.11.14 – A2/A2 – This bull will be going on Centre on the 10th October and will be looking for a home at the end of the year. He is by Tredinney Yogis Prince (GMI+20 206) out of Briddlesford Oaks Foxglove (EX 92) and GMI+20F of 190. The bull has a GMI+20F of 198, is + Fat (0.04) and Protein (0.04) and is + for Fertility

(+0.2) Contact the Griffins on 01983 882239 or the Office on 01822 870727.

## NATIONAL BREED SHOW

Our National Breed Show takes place on 5th October 2016 at The SW Dairy Show.

Please support the Guernsey breed at this our 2nd National Breed Show, once again we are envisaging an impressive turnout of Guernseys with several of our leading herds free of TB this year, although unfortunately there will be some notable exceptions. Again we are grateful to our additional sponsors for this year – QMP, UKSS, Crediton Milling Company, Cornish Mutual Assurance Company, Cogent, Briddlesford Farm Shop and Chew Moos, who, as last year will be selling their unique Ice Cream from the Society Stand in the Showering Pavilion alongside the Show Ring.

We warmly welcome Meurig James as our Master Judge of the Cattle Classes and express our appreciation to the Bath and West Show Society for their help and assistance in getting this event off the ground. The Showmanship and Calf Classes on the previous Tuesday evening have also been additionally sponsored and we thank the Devon and Cornwall Guernsey Clubs for their contributions.

During the Wednesday, Cream Teas and homemade cakes will be served directly behind the Society Main Stand (No. 173) at Stand No 194. Once again I thank the Wessex Guernsey Club for supplying the refreshment and the help of, in particular, the Bartlett family for making this possible. I very much hope we can build on the success of our first National Breed Show in 2015 and encourage as many of our members as possible to join us at Shepton Mallet – you are all very welcome, though not all at once.

I look forward to seeing many of you there during the day.

*Caroline*



Date issued: September 2016  
 Breeder/: Coulee Crest LLC,  
 Owner: Cashton, WI 54619

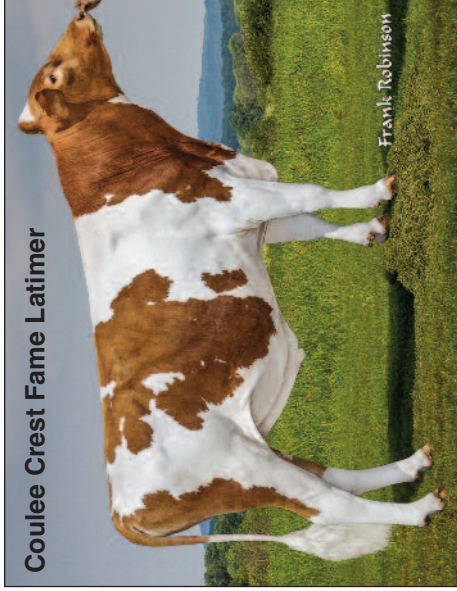
## COULEE CREST FAME LATIMER 78001154 A2/A2

Rel	Milk	BF	PT	F%	P%	F + P	F&L	Mam	SCC	Fert	GMI	DS	PLI
gBVs	334	11.0	10.1	-0.09	-0.03	21.1	1.5	2.0	9	-4.3	142	2.0	26

Born: 4 January 2013

**GMI: 26**

Coulee Crest Fame Latimer



### TROTACRE LORAL TILLER 603341

Rel	Milk	BF	PT	F%	P%	F + P	F&L	Mam	SCC	Fert	GMI	DS	PLI
81	348	9.7	7.3	-0.12	-0.07	17.0	1.1	0.9	16	-17.4	-230	2.5	-285

### R WAY ROYAL OAK FAYE 3068719

Rel	Milk	BF	PT	F%	P%	F + P	F&L	Mam	SCC	Fert	GMI	DS	PLI
51	58	-2.6	2.0	-0.09	0.00	-0.6	1.4	1.2	10	-4.0	-49	0.0	-176

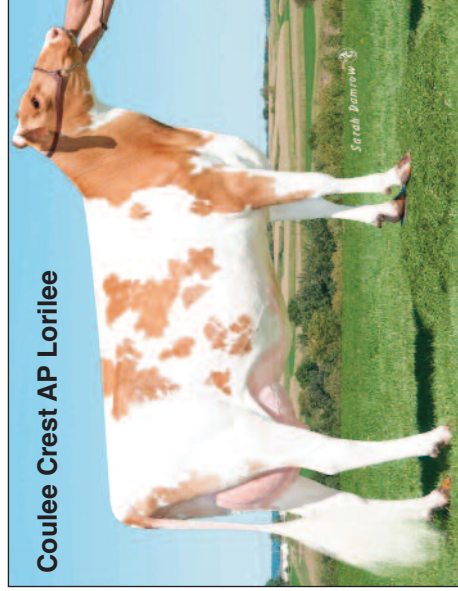
### MILLBORNE TILLER FAYES FAME 68008443

Rel	Milk	BF	PT	F%	P%	F + P	F&L	Mam	SCC	Fert	GMI	DS	PLI
67	171	-0.5	5.6	-0.15	0.00	5.1	2.0	2.8	22	-16.9	-224	2.9	-218

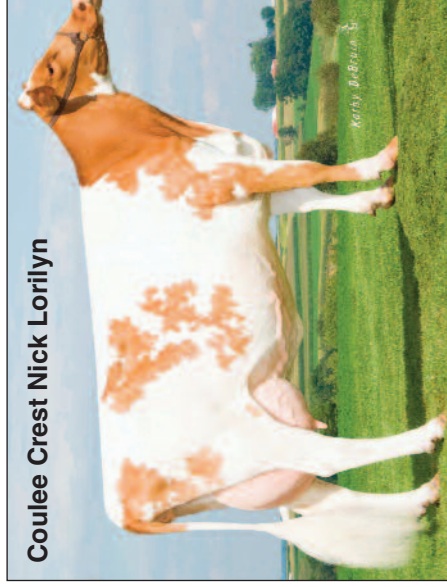
### COULEE CREST AP LORILEE 68042571

Rel	Milk	BF	PT	F%	P%	F + P	F&L	Mam	SCC	Fert	GMI	DS	PLI
54	449	19.8	13.0	-0.03	-0.05	32.9	0.9	1.4	4	-3.6	228	0.0	116

Coulee Crest AP Lorilee



Coulee Crest Nick Lorilyn



### INDIAN ACRES AMERICAN PIE 68016348

Rel	Milk	BF	PT	F%	P%	F + P	F&L	Mam	SCC	Fert	GMI	DS	PLI
70	246	0.6	3.5	-0.19	-0.08	4.1	1.4	1.2	-3	-4.8	-72	0.5	82

### COULEE CREST NICK LORILYN 68023988

Rel	Milk	BF	PT	F%	P%	F + P	F&L	Mam	SCC	Fert	GMI	DS	PLI
64	535	20.8	14.1	-0.08	-0.08	34.9	1.0	1.2	11	-3.3	221	0.0	-22

### TROTACRE MERCURY LORAL 602121

Rel	Milk	BF	PT	F%	P%	F + P	F&L	Mam	SCC	Fert	GMI	DS	PLI
77	115	-1.6	2.5	-0.12	-0.02	0.9	-0.3	-0.1	7	-9.7	-215	1.3	-325

### GREENWOOD M TILLIE ET 3013942

Rel	Milk	BF	PT	F%	P%	F + P	F&L	Mam	SCC	Fert	GMI	DS	PLI
61	269	4.8	5.8	-0.14	-0.05	10.6	-0.1	0.0	6	-7.5	-106	0.0	-125

### JENSGOLDEN PROKING ROYAL OAK i 602216

Rel	Milk	BF	PT	F%	P%	F + P	F&L	Mam	SCC	Fert	GMI	DS	PLI
99	181	7.9	6.1	-0.020		14	0.3	1.8	-5	-17.6	-182	2.9	-184

### CALLUMLEA BILLBOARD FLOSSIE 3050310

Rel	Milk	BF	PT	F%	P%	F + P	F&L	Mam	SCC	Fert	GMI	DS	PLI
30	-71	-11.0	-2.5	-0.14	0.00	-13.5	0.5	-0.5	8	-5.5	-244	0.0	-407

**Sexed Semen £28.50 per straw  
 (£27.50 for Levy members)**

+ Handling and Delivery  
 available from 10 March 2016  
 Delivery charges to Genus and  
 other third parties at cost.

### IDLE GOLD E CHALLENGE - ET 604268

Rel	Milk	BF	PT	F%	P%	F + P	F&L	Mam	SCC	Fert	GMI	DS	PLI
92	68	8.6	3.3	0.09	0.02	11.9	1.1	-0.1	-6	-1.0	109	0.6	131

### INDIAN ACRES MM PISTACHIO PIE 3076310

Rel	Milk	BF	PT	F%	P%	F + P	F&L	Mam	SCC	Fert	GMI	DS	PLI
65	327	1.5	7.2	-0.24	-0.07	8.8	1.2	1.3	1	-5.3	-33	0.0	-54

### LANG HAVEN TILLER NICK-ET 68009162

Rel	Milk	BF	PT	F%	P%	F + P	F&L	Mam	SCC	Fert	GMI	DS	PLI
81	321	17.0	9.4	0.02	-0.02	26.4	1.0	0.5	8	-14.5	-60	3.1	-203

### FLAMBEAU MANOR DECISION LORI-ET 68012709

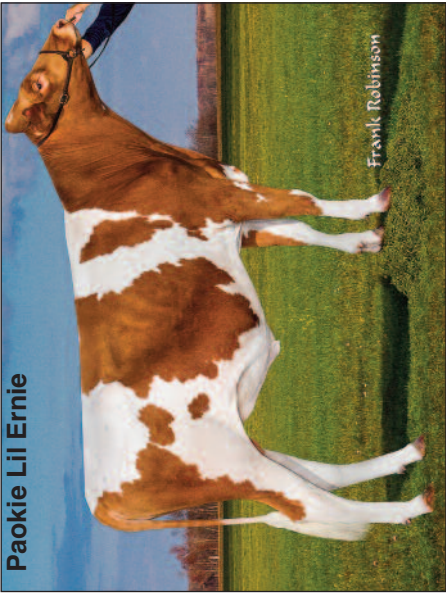
Rel	Milk	BF	PT	F%	P%	F + P	F&L	Mam	SCC	Fert	GMI	DS	PLI
62	537	22.5	10.9	-0.06	-0.13	33.5	0.9	1.0	5	-3.8	160	0.0	60

Date issued: September 2016  
 Breeder: Lily Lane and Trotacre Farm, Enon Valley, PA 16120

**PAOKIE LIL ERNIE 78004479 A2/A2**

Rel	Milk	BF	PT	F%	P%	F + P	F&L	Mam	SCC	Fert	GMI	DS	PLI
gBVs	325	13.4	8.0	-0.04	-0.06	21.4	0.8	1.1	2	-4.8	90	0.6	86

Born: 27 September 2014  
**GMI: 90**



Paokie Lil Ernie

**SNIDERS RONALD ALSTAR 604761**

Rel	Milk	BF	PT	F%	P%	F + P	F&L	Mam	SCC	Fert	GMI	DS	PLI
93	516	14.1	10.7	-0.18	-0.10	24.8	0.4	0.6	-2	1.9	192	0.2	219

**SPRINGHILL CHALLENGE JACEY-ET 68030417**

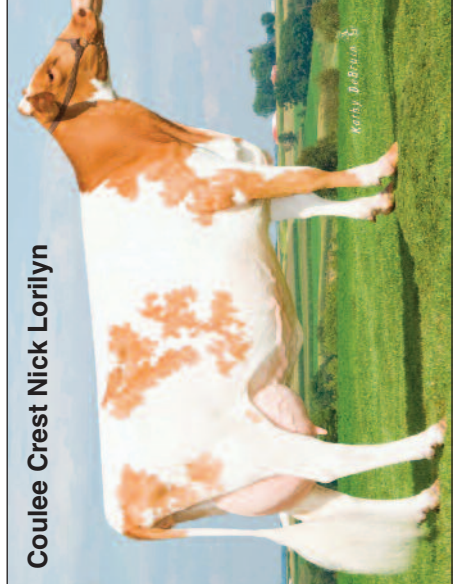
Rel	Milk	BF	PT	F%	P%	F + P	F&L	Mam	SCC	Fert	GMI	DS	PLI
50	113	6.3	3.6	0.01	-0.01	9.8	0.9	2.2	-4	-6.8	13	0.0	173

**SPRINGHILL JETSTREAM 68031500**

Rel	Milk	BF	PT	F%	P%	F + P	F&L	Mam	SCC	Fert	GMI	DS	PLI
pa	314	10.2	7.1	-0.08	-0.05	17.3	0.7	1.4	-3	-2.5	102	0.1	196

**COULEE CREST AP LORILEE 68042571**

Rel	Milk	BF	PT	F%	P%	F + P	F&L	Mam	SCC	Fert	GMI	DS	PLI
54	449	19.8	13.0	-0.03	-0.05	32.9	0.9	1.4	4	-3.6	228	0.0	116



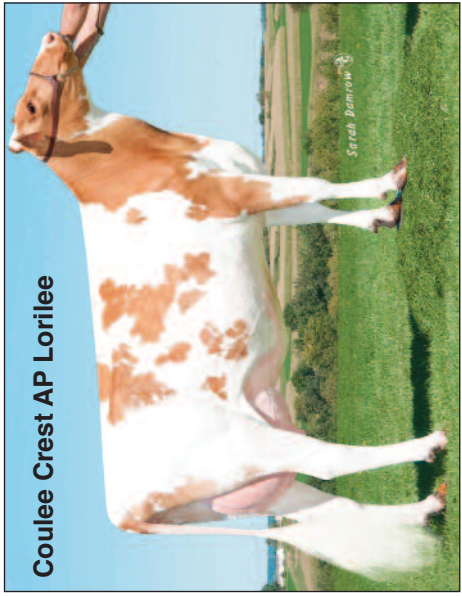
Coulee Crest Nick Lorilyn

**INDIAN ACRES AMERICAN PIE 68016348**

Rel	Milk	BF	PT	F%	P%	F + P	F&L	Mam	SCC	Fert	GMI	DS	PLI
70	246	0.6	3.5	-0.19	-0.08	4.1	1.4	1.2	-3	-4.8	-72	0.5	82

**COULEE CREST NICK LORILYN 68023988**

Rel	Milk	BF	PT	F%	P%	F + P	F&L	Mam	SCC	Fert	GMI	DS	PLI
64	535	20.8	14.1	-0.08	-0.08	34.9	1.0	1.2	11	-3.3	221	0.0	-22



Coulee Crest AP Lorilee

**MARODORE GOLIATHS RONALD i 603218**

Rel	Milk	BF	PT	F%	P%	F + P	F&L	Mam	SCC	Fert	GMI	DS	PLI
92	123	1.8	2.0	-0.07	-0.03	3.8	-0.5	0.4	6	8.3	1730.1	95	

**CEDAR FRINGED ALTANN 3045188**

Rel	Milk	BF	PT	F%	P%	F + P	F&L	Mam	SCC	Fert	GMI	DS	PLI
73	381	11.9	7.1	-0.11	-0.09	19.0	0.7	1.6	-7	-1.9	81	0.0	41

**IDLE GOLD E CHALLENGE - ET 604268**

Rel	Milk	BF	PT	F%	P%	F + P	F&L	Mam	SCC	Fert	GMI	DS	PLI
92	68	8.6	3.3	0.09	0.02	11.9	1.1	-0.1	-6	-1.0	109	0.6	131

**DIX LEE TILLER JOKE 68001932**

Rel	Milk	BF	PT	F%	P%	F + P	F&L	Mam	SCC	Fert	GMI	DS	PLI
64	51	2.1	0.2	-0.01	-0.03	2.3	1.2	2.4	*	-4.2	-85	0.0	-92

**Sexed Semen £28.50 per straw (£27.50 for Levy members)**  
 + Handling and Delivery  
 available from 10 March 2016  
 Delivery charges to Genus and other third parties at cost.

**IDLE GOLD E CHALLENGE - ET 604268**

Rel	Milk	BF	PT	F%	P%	F + P	F&L	Mam	SCC	Fert	GMI	DS	PLI
92	68	8.6	3.3	0.09	0.02	11.9	1.1	-0.1	-6	-1.0	109	0.6	131

**INDIAN ACRES MM PISTACHIO PIE 3076310**

Rel	Milk	BF	PT	F%	P%	F + P	F&L	Mam	SCC	Fert	GMI	DS	PLI
65	327	1.5	7.2	-0.24	-0.07	8.8	1.2	1.3	1	-5.3	-33	0.0	-54

**LANG HAVEN TILLER NICK-ET 68009162**

Rel	Milk	BF	PT	F%	P%	F + P	F&L	Mam	SCC	Fert	GMI	DS	PLI
81	321	17.0	9.4	0.02	-0.02	26.4	1.0	0.5	8	-14.5	-60	3.1	-203

**FLAMBEAU MANOR DECISION LORI-ET 68012709**

Rel	Milk	BF	PT	F%	P%	F + P	F&L	Mam	SCC	Fert	GMI	DS	PLI
62	537	22.5	10.9	-0.06	-0.13	33.5	0.9	1.0	5	-3.8	160	0.0	60

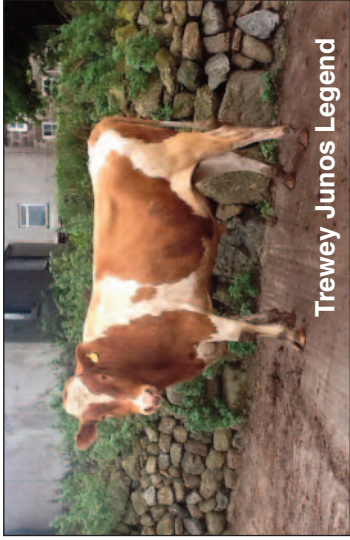


Date issued: September 2016  
 Breeder: JA & JH Mann  
 Owner: Trewey Farm, Zennor  
 St Ives TR26 3DA

**TREWEY JUNOS LEGEND 43879 A2/A2**

Rel	Milk	BF	PT	F%	P%	F + P	F&L	Mam	SCC	Fert	GMI	DS	PLI
30	308	14.2	6.0	-0.01	-0.07	20.2	0.5	0.9	11	-3.4	76	0.6	25

Born: 31 Aug 2014  
**GMI: 76**



Trewey Junos Legend

**GOLDEN J RONALD GRUMPY 604960 A2/A2**

Rel	Milk	BF	PT	F%	P%	F + P	F&L	Mam	SCC	Fert	GMI	DS	PLI
93	180	8.7	6.1	0.00	0.00	14.8	0.9	2.1	-3	1.0	212	0.2	266

**MARODORE GOLIATHS RONALD 603218 A2/A2**

Rel	Milk	BF	PT	F%	P%	F + P	F&L	Mam	SCC	Fert	GMI	DS	PLI
92	123	1.8	2.0	-0.07	-0.033	8	-0.5	0.4	6	8.3	173	0.1	95

**GOLDEN J OAK GRINCH 3070844**

Rel	Milk	BF	PT	F%	P%	F + P	F&L	Mam	SCC	Fert	GMI	DS	PLI
67	251	7.4	7.2	-0.08	-0.0214	60.7	1.5	-1	-8.3	-24	0.0	-21	

**COULEE CREST NICK LORILYN 68023988**

Rel	Milk	BF	PT	F%	P%	F + P	F&L	Mam	SCC	Fert	GMI	DS	PLI
64	535	20.8	14.1	-0.08	-0.08	34.9	1.0	1.2	11	-3.3	221	0.0	-22

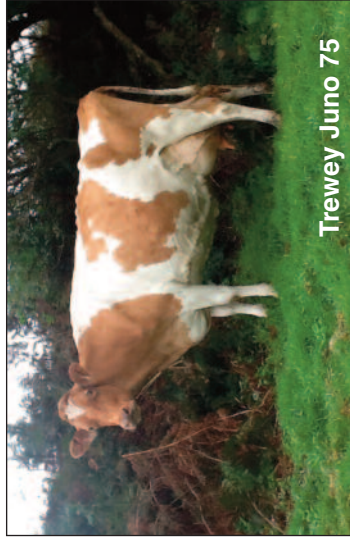
**COULEE CREST GRUMPY LEGEND ET 68045040 A2/A2**

Rel	Milk	BF	PT	F%	P%	F + P	F&L	Mam	SCC	Fert	GMI	DS	PLI
52	300	11.4	8.9	-0.05	-0.01	20.3	0.2	2.1	4	-5.1	110	1.0	84

**TREWEY JUNO 75 445462 EX93(2)**

Rel	Milk	BF	PT	F%	P%	F + P	F&L	Mam	SCC	Fert	GMI	DS	PLI	
68	315	17.0	3.1	0.04	-0.13	20.1	0.8	-0.4	18	-1.7	42	0.1	-34	
Lac	Age	Milk	Days	Fat %	Prt %	Pi								
1	2/11	7019	305	5.09	3.16	222	132							
2	4/3	5946	305	5.22	3.10	3.35	199	104						
3	5/5	7559	305	5.37	4.06	3.40	257	115						
4	6/7	8251	305	5.40	4.45	3.48	287	124						
5	7/11	9029	305	5.33	4.82	3.19	288	127						

**Semen available  
 £7.50 per straw**  
 (£6.50 Levy paying members)  
 regardless of size of order  
 + handling and delivery.  
 Delivery charges to Genus  
 and other third parties at cost.



Trewey Juno 75

**FLAMBEAU MANOR TILLER LOREN 68000502**

Rel	Milk	BF	PT	F%	P%	F + P	F&L	Mam	SCC	Fert	GMI	DS	PLI
92	408	16.0	3.5	-0.06	-0.16	19.5	0.9	-0.8	20	-7.6	-123	1.0	-185

**TREWEY JUNO 31 432478 VG89(5YR)**

Rel	Milk	BF	PT	F%	P%	F + P	F&L	Mam	SCC	Fert	GMI	DS	PLI
74	36	5.0	-1.6	0.08	-0.02	3.4	0.2	0.4	14	3.3	39	-0.1	-70
1	3/0	4694	305	5.14	241	3.45	162	115					
2	4/4	6047	305	5.26	318	3.39	205	121					
3	5/4	4966	295	5.54	275	3.89	193	100					
4	6/3	6899	305	5.05	348	3.39	234	121					
5	8/0	6684	305	5.02	336	3.38	226	114					
6	9/1	4462	211	4.76	212	3.42	153	75					

**TROTACRE LORAL TILLER 603341 A2/A2**

Rel	Milk	BF	PT	F%	P%	F + P	F&L	Mam	SCC	Fert	GMI	DS	PLI
81	348	9.7	7.3	-0.12	-0.0717	0.1	0.9	16	-17.4	-230	2.5	-285	

**FLAMBEAU MANOR G LAUREN 3056014**

Rel	Milk	BF	PT	F%	P%	F + P	F&L	Mam	SCC	Fert	GMI	DS	PLI
63	-17	1.0	-1.6	0.03	-0.02	-0.60	1.0	5	-3.8	160	0.0	60	

**LAESCHLAND FORESTAR BRENT 602508**

Rel	Milk	BF	PT	F%	P%	F + P	F&L	Mam	SCC	Fert	GMI	DS	PLI
95	-118	-11.2	-4.7	-0.10	-0.02	-15.9	-1.0	-0.3	1	0.1	-164	-0.8	-134

**TREWEY JUNO 14 0432405 VG86(9YR)**

Rel	Milk	BF	PT	F%	P%	F + P	F&L	Mam	SCC	Fert	GMI	DS	PLI
67	-231	-8.2	-7.20	0.10	0.06	-15.4	* * * * *	2	3.9	-69	0.0	-80	
1	2/9	3800	305	5.40	205	3.54	135	100					
2	3/9	5168	305	5.29	274	3.67	190	125					
3	4/11	3242	287	5.07	164	3.96	129	68					
6	7/11	5567	305	4.96	276	3.62	201	118					

**LANG HAVEN TILLER NICK 68009162**

Rel	Milk	BF	PT	F%	P%	F + P	F&L	Mam	SCC	Fert	GMI	DS	PLI
81	321	17	9.4	0.02	-0.02	26.4	1	0.5	8	-14.5	-60	3.1	-203

**FLAMBEAU MANOR DECISION LORI - ET 68012709**

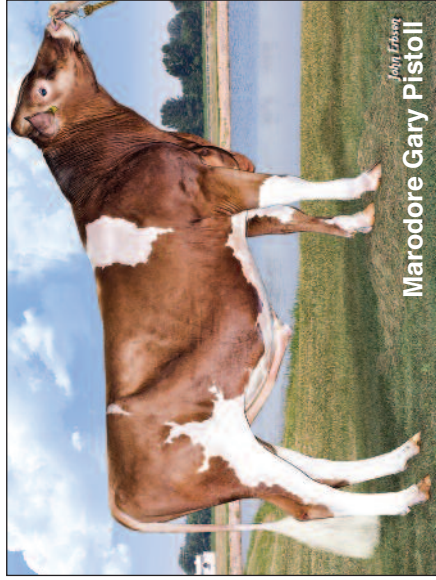
Rel	Milk	BF	PT	F%	P%	F + P	F&L	Mam	SCC	Fert	GMI	DS	PLI
62	537	22.5	10.9	-0.06	-0.1333	50.9	1.0	5	-3.8	160	0.0	60	

Date issued: September 2016  
 Breeder: Lee Kohler & Family  
 Owner: 5745 Burchey Road,  
 Baltimore, Ohio, USA

## MARODORE GARY PISTOLL 68039918 A2/A2

Rel	Milk	BF	PT	F%	P%	F + P	F&L	Mam	SCC	Fert	GMI	DS	PLI
gBVs	395	13.0	8.0	-0.10	-0.10	21.1	0.3	1.2	9	-4.8	50	1.5	-113

Born: 26 June 2013  
**GMI: 50**

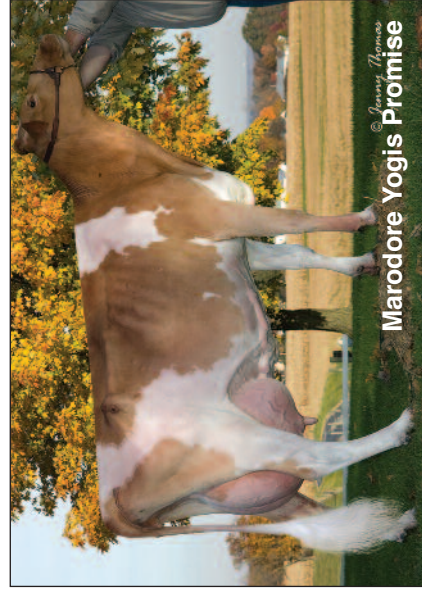


### GOLDEN J SKIPPER GARY 68013855

Rel	Milk	BF	PT	F%	P%	F + P	F&L	Mam	SCC	Fert	GMI	DS	PLI
69	391	10.7	9.5	-0.14	-0.05	20.2	-0.3	0.9	11	-6.4	12	2.1	-104

### MARODORE YOGIS PROMISE 68030933

Rel	Milk	BF	PT	F%	P%	F + P	F&L	Mam	SCC	Fert	GMI	DS	PLI
48	413	15.4	8.6	-0.08	-0.10	24.0	1.2	1.6	2	-6.3	69	0.0	-67
Age	Milk	Days	Fat %	Fat	Prt%	Prt							
2/5	6167	298	4.75	293	3.57	220							
3/5	7343	305	5.03	370	3.59	264							
4/6	7140	276	4.91	351	3.75	268							



### COULEE CREST LUXURY SKIPPER 604230

Rel	Milk	BF	PT	F%	P%	F + P	F&L	Mam	SCC	Fert	GMI	DS	PLI
78	122	-1.7	2.6	-0.13	-0.02	0.9	-1.1	0.8	20	-4.8	-114	0.7	-182

### GOLDEN J OAK GRINCH 3070844

Rel	Milk	BF	PT	F%	P%	F + P	F&L	Mam	SCC	Fert	GMI	DS	PLI
67	251	7.4	7.2	-0.08	-0.02	14.6	0.7	1.5	-1	-8.3	-24	0.0	-21

**Semen available**  
**£7.50 per straw**

(£6.50 Levy paying members)  
 regardless of size of order  
 + handling and delivery.  
 Delivery charges to Genus  
 and other third parties at cost.

### EDGEWATER MEADOWS YOGIBEAR 604917

Rel	Milk	BF	PT	F%	P%	F + P	F&L	Mam	SCC	Fert	GMI	DS	PLI
97	150	8.4	5.5	0.02	0.01	13.9	1.5	2.7	-1	-3.6	136	1.5	121

### THREE BROOKS ALSTAR PIXIE 68008750

Rel	Milk	BF	PT	F%	P%	F + P	F&L	Mam	SCC	Fert	GMI	DS	PLI
47	509	19.5	9.9	-0.09	-0.13	29.4	0.9	0.7	-1	-5.4	88	0.0	28
3/3	5725	305	305	5.25	300	3.54	203						
4/3	6264	305	305	5.40	339	3.65	229						
5/5	5799	305	305	5.30	308	3.58	208						
6/8	6723	305	305	5.37	361	3.45	232						

Rel	Milk	BF	PT	F%	P%	F + P	F&L	Mam	SCC	Fert	GMI	DS	PLI
gBVs	395	13.0	8.0	-0.10	-0.10	21.1	0.3	1.2	9	-4.8	50	1.5	-113

### TROTACRE JAY MR LUXURY 602751

Rel	Milk	BF	PT	F%	P%	F + P	F&L	Mam	SCC	Fert	GMI	DS	PLI
98	311	4.6	9.5	-0.18	-0.01	14.4	1.0	1.4	1.7	162	1.8	99	

### COULEE CREST ENHANCER SNOW 3050736

Rel	Milk	BF	PT	F%	P%	F + P	F&L	Mam	SCC	Fert	GMI	DS	PLI
67	215	7.7	4.3	-0.05	-0.05	12.0	-0.20	6	2	-8.2	-114	0.0	-171

### JENSGOLDEN PROKING ROYAL OAK 602216

Rel	Milk	BF	PT	F%	P%	F + P	F&L	Mam	SCC	Fert	GMI	DS	PLI
99	181	7.9	6.1	-0.020	14	0.3	1.8	-5	-17.6	-182	2.9	-184	

### ELJO MAGIC GLENNIS 3034184

Rel	Milk	BF	PT	F%	P%	F + P	F&L	Mam	SCC	Fert	GMI	DS	PLI
48	192	4.6	5.7	-0.08	-0.02	10.2	-0.2	0.3	*	-4.8	-29	0.0	-3

### TROTACRE LORAL TILLER 603341

Rel	Milk	BF	PT	F%	P%	F + P	F&L	Mam	SCC	Fert	GMI	DS	PLI
81	348	9.7	7.3	-0.12	-0.07	17.0	1.1	0.9	16	-17.4	-230	2.5	-285

### MEADOWS GOLIATH YOGI 3050104

Rel	Milk	BF	PT	F%	P%	F + P	F&L	Mam	SCC	Fert	GMI	DS	PLI
61	-101	1.0	-1.6	0.11	0.03	-0.6	0.1	1.9	-6	7.8	190	0.0	166
2/5	5262	305	4.34	228	3.47	183							
4/0	8561	305	4.50	385	3.59	307							
5/0	8836	305	4.62	408	3.64	322							
6/0	10043	305	4.49	451	3.61	363							

### SNIDERS RONALD ALSTAR 604761

Rel	Milk	BF	PT	F%	P%	F + P	F&L	Mam	SCC	Fert	GMI	DS	PLI
93	516	14.1	10.7	-0.18	-0.10	24.8	0.4	0.6	-2	1.9	192	0.2	219

### THREE BROOKS FORTRESS PICKLES 3079044

Rel	Milk	BF	PT	F%	P%	F + P	F&L	Mam	SCC	Fert	GMI	DS	PLI
44	334	5.2	5.7	-0.18	-0.10	10.9	1.2	-0.3	-2	-5.2	-70	0.0	-125