



# The English Guernsey Cattle Society Newsletter

Michaelmas Cottage, Meadwell Farm, Kelly, Lifton, Devon, PL16 0HJ

Tel: 01822 870727 e-mail: [office@guernseycattle.com](mailto:office@guernseycattle.com) [www.guernseycattle.com](http://www.guernseycattle.com)

Spring 2017

Welcome to the Spring Newsletter 2017 and looking out of the window what beautiful Spring weather we are enjoying even though it is a little on the cool side, especially at night. Crops are being sown and silaging is on the horizon, if the milk price can stabilise, maybe we can all look forward to a slightly brighter future in dairying this year, a sigh of relief all round - here's hoping.

In this Newsletter you will find a selection of 4 bulls on offer, you will have noticed in recent editions we are concentrating on promoting Mainland bulls with less emphasis on American bulls. Our reasons for this are mainly twofold; to address the shortfall in constituent value which has become increasingly evident in American bulls, most of the bulls you will see advertised now are plus for Fat and Protein, so the Society can help you to fulfil the requirement of your individual milk contract, secondly the expense of importing semen from overseas together with the continuing fallout from Brexit makes it financially prudent for the Society to market more home grown bulls. The exception to this is the supply of sexed semen which we will have to continue to import for the foreseeable future. I would further remind you that the Society is

subsidising the extended use of Sexed semen by offering a straw of current Mainland Conventional semen FREE OF CHARGE with every straw of Sexed semen purchased from the Society. You will not find this opportunity with any other semen company, so if you have considered the use of sexed semen in the past there is no better time than to start now. Sexed semen is available from Flambeau Manor Lady's Man (Page 4) and Coulee Crest Fame Latimer at £27.50 per straw (£26.50 for Levy members). In addition, keep your registrations up to date (within 60 days of birth) and the Society will credit you £2 for every calf registered on time which can be deducted from your semen orders in 2018 - ITS SO EASY TO SAVE MONEY WITH EGCS.

So lets get back to the bulls in this edition:

Page 2 - Trewey Junos Legend, a Legend son bred by the Mann family out of their excellent Juno family. Those of you that have not already used him, well worth a try if only for the longevity and reliability of the Juno family. **This bull is now for sale, please contact David Mann on 01736 796443 for further details.**

Page 3 - Briddlesford Foxgloves James - A Prince son out of the

Griffin's Oak's Foxglove, excellent breeding and type from Yogibear and Oak with the added bonus of plus figures for Fat and Protein. On leaving Centre the bull was purchased by Mark Jones of Hereford and is working to good effect on farm.

Page 4 - Flambeau Manor Ladys Man - Sexed and conventional semen was imported from this bull in January, a Levi son, once again offering Yogibear and Aaron ancestry bringing the potential of milk and type, in particular scoring 1.79 for Mammary.

Page 5 - Tredinney Ivans Flo Rider - this bull is sired by some of the last semen to be imported from the Island from Les Jaonnets Iris Ivan, which on the Dam side goes back to Maple Leaf Lindon Sultan. The dam Tredinney Aarons Flo 6 has graced the show ring many times and has two generations of EX behind her. A combination of this breeding offers scores of 1.44 for Legs and Feet and 1.40 for Mammary.

On Page 6 you will see a repeat of Sue Staples article on in breeding, first published this time last year, but this time including a response from Dr Maurice Richard. Please read both articles with an open mind so that the Society and you, the cow breeding members can make a concerted effort to stop this trend in its tracks.

## BULL FOR SALE



### Bourton Levi Casper

born 10th December 2016 and shortlisted for semen collection at the end of the year, Casper is looking for a new home where, ideally, he will be kept as safe as he can be from the threat of TB. With a GMI +20F of 240 and plus figures throughout (Fat +0.01, Protein +0.01, Feet and Legs 0.93, Mammary 1.90) he is sired by Levi out of a full sister to Bourton Grumpys Claude

(GMI 277) of the Clover family - 3 generations VG / EX. For more details please contact Philip Cox on 07970 472205.



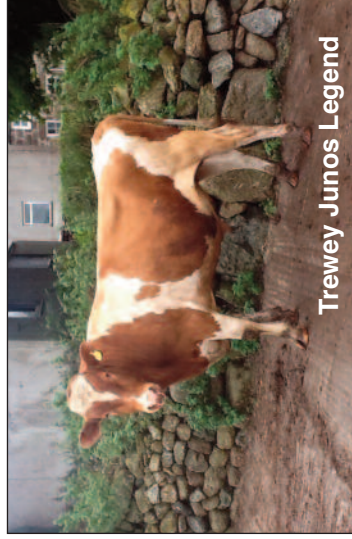
Bourton Clover 42 - GMI+20F 249

Date issued: April 2017  
 Breeder/: JA & JH Mann  
 Owner: Trewey Farm, Zennor  
 St Ives TR26 3DA

## TREWEY JUNOS LEGEND 43879 A2/A2

Rel	Milk	BF	PT	F%	P%	F + P	F&L	Mam	SCC	Fert	GMI	DS	PLI
38	206	10.7	4.7	0.03	-0.05	15.4	0.9	1.0	9	-2.8	126	0.7	19

Born: 31 Aug 2014  
**GMI: 126**



Trewey Junos Legend

**GOLDEN J RONALD GRUMPY 604960 A2/A2**

Rel	Milk	BF	PT	F%	P%	F + P	F&L	Mam	SCC	Fert	GMI	DS	PLI
94	110	5.2	5.4	0.01	0.02	10.6	0.6	2.0	-5	0.1	169	0.2	238

Rel	Milk	BF	PT	F%	P%	F + P	F&L	Mam	SCC	Fert	GMI	DS	PLI
92	156	3.5	2.7	-0.03	-0.036	2	-0.7	0.2	5	6.4	17	0.0	85

**GOLDEN J OAK GRINCH 3070844**

Rel	Milk	BF	PT	F%	P%	F + P	F&L	Mam	SCC	Fert	GMI	DS	PLI
68	268	10.2	8.5	-0.050	0.0018	70.9	1.4	-4	-8.0	23	0.0	-14	

**LANG HAVEN TILLER NICK 68009162**

Rel	Milk	BF	PT	F%	P%	F + P	F&L	Mam	SCC	Fert	GMI	DS	PLI
82	225	11.5	8.3	0.03	0.01	19.8	0.6	0.3	8	-12.6	188	3.0	-197

**FLAMBEAU MANOR DECISION LORI - ET 68012709**

Rel	Milk	BF	PT	F%	P%	F + P	F&L	Mam	SCC	Fert	GMI	DS	PLI
64	559	26.1	13.9	-0.02	-0.1040	0.05	1.2	0	-0.3	236	0.0	93	

**COULLEE CREST GRUMPY LEGEND ET 68045040 A2/A2**

Rel	Milk	BF	PT	F%	P%	F + P	F&L	Mam	SCC	Fert	GMI	DS	PLI
82	106	1.3	6.0	-0.04	0.03	7.3	0.9	2.3	-1	-4.6	156	1.3	40

**TREWEY JUNO 75 445462 EX93(2)**

Rel	Milk	BF	PT	F%	P%	F + P	F&L	Mam	SCC	Fert	GMI	DS	PLI
68	305	20.1	3.4	0.09	-0.13	23.5	0.8	-0.4	18	-1.0	95	0.1	-2
Lac	Age	Milk	Days	Fat %									
1	2/11	7019	305	5.09		358	3.16	222	132				
2	4/3	5946	305	5.22		310	3.35	199	104				
3	5/5	7559	305	5.37		406	3.40	257	115				
4	6/7	8251	305	5.40		445	3.48	287	124				
5	7/11	9029	305	5.33		482	3.19	288	127				

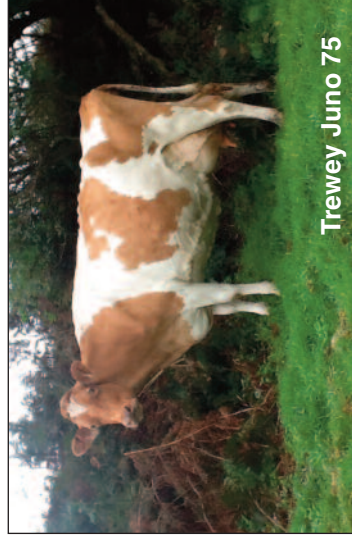
**Semen available  
 £7.50 per straw**  
 (£6.50 Levy paying members)  
 regardless of size of order  
 + handling and delivery.  
 Delivery charges to Genus  
 and other third parties at cost.

**FLAMBEAU MANOR TILLER LOREN 68000502**

Rel	Milk	BF	PT	F%	P%	F + P	F&L	Mam	SCC	Fert	GMI	DS	PLI
92	352	15.5	3.3	-0.03	-0.14	18.8	0.7	-0.8	21	-7.6	-113	1.0	-186

**TREWEY JUNO 31 432478 VG89(5YR)**

Rel	Milk	BF	PT	F%	P%	F + P	F&L	Mam	SCC	Fert	GMI	DS	PLI
74	-48	5.2	-2.6	0.14	-0.02	2.6	0.2	0.4	15	3.8	65	-0.1	-58
1	3/0	4694	305	5.14		241	3.45	162	115				
2	4/4	6047	305	5.26		318	3.39	205	121				
3	5/4	4966	295	5.54		275	3.89	193	100				
4	6/3	6699	305	5.05		348	3.39	234	121				
5	8/0	6684	305	5.02		336	3.38	226	114				
6	9/1	4462	211	4.76		212	3.42	153	75				



Trewey Juno 75

**MARODORE GOLIATHS RONALD 603218 A2A2**

Rel	Milk	BF	PT	F%	P%	F + P	F&L	Mam	SCC	Fert	GMI	DS	PLI
92	156	3.5	2.7	-0.03	-0.036	2	-0.7	0.2	5	6.4	17	0.0	85

**GOLDEN J OAK GRINCH 3070844**

Rel	Milk	BF	PT	F%	P%	F + P	F&L	Mam	SCC	Fert	GMI	DS	PLI
68	268	10.2	8.5	-0.050	0.0018	70.9	1.4	-4	-8.0	23	0.0	-14	

**LANG HAVEN TILLER NICK 68009162**

Rel	Milk	BF	PT	F%	P%	F + P	F&L	Mam	SCC	Fert	GMI	DS	PLI
82	225	11.5	8.3	0.03	0.01	19.8	0.6	0.3	8	-12.6	188	3.0	-197

**FLAMBEAU MANOR DECISION LORI - ET 68012709**

Rel	Milk	BF	PT	F%	P%	F + P	F&L	Mam	SCC	Fert	GMI	DS	PLI
64	559	26.1	13.9	-0.02	-0.1040	0.05	1.2	0	-0.3	236	0.0	93	

**TROTACRE LORAL TILLER 603341 A2/A2**

Rel	Milk	BF	PT	F%	P%	F + P	F&L	Mam	SCC	Fert	GMI	DS	PLI
82	315	9.4	7.3	-0.04	-0.0416	71.2	1.0	15	-11.4	132	2.4	-210	

**FLAMBEAU MANOR G LAUREN 3056014**

Rel	Milk	BF	PT	F%	P%	F + P	F&L	Mam	SCC	Fert	GMI	DS	PLI
63	-3	3.9	-1.2	0.07	-0.0227	-0.4	0.6	5	6.6	104	0.0	36	

**LAESCHLAND FORESTAR BRENT 602508**

Rel	Milk	BF	PT	F%	P%	F + P	F&L	Mam	SCC	Fert	GMI	DS	PLI
95	-106	-8.6	-5.2	-0.06	-0.03	-13.8	-0.9	-0.5	2	0.3	-157	-0.9	-126

**TREWEY JUNO 14 0432405 VG86(9YR)**

Rel	Milk	BF	PT	F%	P%	F + P	F&L	Mam	SCC	Fert	GMI	DS	PLI
67	-398	-11.7	-10.5	0.15	0.08	-22.20	0.0	0.0	2	4.6	-87	0.0	-100
1	2/9	3800	305	5.40		205	3.54	135	100				
2	3/9	5168	305	5.29		274	3.67	190	125				
3	4/11	3242	287	5.07		164	3.96	129	68				
6	7/11	5567	305	4.96		276	3.62	201	118				

Date issued: April 2017

Breeder/: E J Griffin & Son  
 Briddlesford Lodge Farm  
 Wootton Bridge,, Ryde  
 Isle Of Wight, PO33 4RY



Briddlesford Foxglove James

## BRIDDLESFORD FOXGLOVES JAMES 43884 A2/A2

Rel	Milk	BF	PT	F%	P%	F + P	F&L	Mam	SCC	Fert	GMI	DS	PLI
42	110	8.1	6.2	0.05	0.03	14.2	0.3	0.6	-3	0.9	164	0.6	139

Born: 11 November 2014

**GMI: 164**

### EDGEWATER MEADOWS YOGIBEAR 604917 A2/A2

Rel	Milk	BF	PT	F%	P%	F + P	F&L	Mam	SCC	Fert	GMI	DS	PLI
97	118	6.7	5.1	0.03	0.02	11.8	1.4	2.7	-2	-2.9	197	1.5	121

### LAITY FARM PRIMROSE 96 433299 EX95(3) (8YR) DM, CME

Rel	Milk	BF	PT	F%	P%	F + P	F&L	Mam	SCC	Fert	GMI	DS	PLI
75	7	-0.7	4.9	-0.02	0.08	4.2	-0.4	0.3	6	4.5	178	1.2	96
3	5/0	8836	305	4.62	408	3.64	322	124					
5	7/6	9564	305	5.80	555	3.50	335	145					
Av	5Lac	8453	305	4.75	405	3.56	302	125					

### TROTACRE LORAL TILLER 603341 A2/A2

Rel	Milk	BF	PT	F%	P%	F + P	F&L	Mam	SCC	Fert	GMI	DS	PLI
82	315	9.4	7.3	-0.04	-0.04	16.7	1.2	1.0	15	-11.4	132	2.4	210

### EDGEWATER MEADOWS GOLIATH YOGI 3050104

Rel	Milk	BF	PT	F%	P%	F + P	F&L	Mam	SCC	Fert	GMI	DS	PLI
61	-81	3.8	-1.10	14.0	0.3	2.7	0.1	1.7	-7	8.1	225	0.0	191

### TROTACRE JAY MR LUXURY A1A2 602751

Rel	Milk	BF	PT	F%	P%	F + P	F&L	Mam	SCC	Fert	GMI	DS	PLI
98	316	7.5	11	-0.06	0.01	18.5	0.2	0.9	14	1.3	176	1.8	122

### LAITY FARM PRIMROSE 81 428023 H81

Rel	Milk	BF	PT	F%	P%	F + P	F&L	Mam	SCC	Fert	GMI	DS	PLI
66	-168	-3.8	-2.4	0.08	0.07	-6.2	0.2	0.4	0	2.1	38	0.4	35
2/6	5331	305	4.79	255	3.70	197	114						

### BRIDDLESFORD OAKS FOXGLOVE 6 449801 EX92(6YR)

Rel	Milk	BF	PT	F%	P%	F + P	F&L	Mam	SCC	Fert	GMI	DS	PLI
71	241	16.7	8.4	0.09	-0.01	25.1	-0.3	0.3	-12	-0.7	219	0.7	127
1	2/0	5617	300	5.27	349	3.49	231	106					
2	3/0	7638	305	5.54	423	3.62	276	124					
3	4/0	6090	305	5.74	350	3.73	227	93					
4	5/1	9808	305	5.47	537	3.56	349	138					

**Semen available**  
**£7.50 per straw**

(£6.50 Levy paying members)  
 regardless of size of order  
 + handling and delivery.  
 Delivery charges to Genus  
 and other third parties at  
 cost.

### TREDINNEY YOGIS PRINCE 43611

Rel	Milk	BF	PT	F%	P%	F + P	F&L	Mam	SCC	Fert	GMI	DS	PLI
96	-21	-0.6	3.9	0.00	0.06	3.3	0.8	0.8	6	2.5	108	0.4	151

### JENSGOLDEN PROKING ROYAL OAK A2A2 602216

Rel	Milk	BF	PT	F%	P%	F + P	F&L	Mam	SCC	Fert	GMI	DS	PLI
99	204	10.77	50.03	0.01	18.2	0.2	1.7	-5	-17.4	211	2.8	-160	

### BOSKENNA JUNE 423077 CSR EX94(4) (8YR) DM GDIME CME

Rel	Milk	BF	PT	F%	P%	F + P	F&L	Mam	SCC	Fert	GMI	DS	PLI
71	202	9.5	12.60	0.00	0.9	22.1	-0.2	-0.5	10	4.2	313	0.8	149
1	2/1	7281	305	4.82	351	3.51	256	135					
2	3/5	6292	305	4.65	292	3.88	244	110					
3	4/6	9485	305	4.44	421	3.71	352	142					
6	7/11	11272	305	4.40	496	3.63	409	136					

### INSTEAD OBERON 42336

Rel	Milk	BF	PT	F%	P%	F + P	F&L	Mam	SCC	Fert	GMI	DS	PLI
97	-104	-2.9	-1.90	0.40	0.3	-4.8	-1.3	-0.3	20	4.8	38	0.0	-154

### BRIDDLESFORD LUCKS FOXGLOVE 3 444829 CSR DM CM

Rel	Milk	BF	PT	F%	P%	F + P	F&L	Mam	SCC	Fert	GMI	DS	PLI
74	238	1.1	4.7	-0.18	-0.07	5.8	-0.3	-1.1	-10	10.4	194	-0.8201	
2	3/1	7313	305	4.98	364	3.55	259	110					
4	5/3	8202	305	4.96	407	3.45	283	113					
6	7/6	9308	305	4.80	447	3.35	312	110					

### BOSKENNA JUNES ROYAL OAK 43549

Rel	Milk	BF	PT	F%	P%	F + P	F&L	Mam	SCC	Fert	GMI	DS	PLI
98	234	12.1	8.0	0.01	20.1	-0.1	0.6	-22	-14.4	-84	1.5	-85	

### BRIDDLESFORD OBERONS FOXGLOVE 444839 H80

Rel	Milk	BF	PT	F%	P%	F + P	F&L	Mam	SCC	Fert	GMI	DS	PLI
73	104	10.3	4.8	0.10	0.02	15.1	-0.9	-0.1	3	9.4	320	-0.7	184
1	2/0	5177	305	5.92	307	3.74	194	92					
2	3/1	6661	305	6.13	408	3.85	256	112					
3	4/2	6522	305	5.37	351	3.68	240	89					
4	5/3	7389	305	5.44	402	3.63	268	102					
5	6/3	8251	305	5.61	463	3.56	294	115					
6	7/7	8101	305	5.27	427	3.54	287	115					



Briddlesford Oaks Foxglove 6

Date issued: April 2017

Breeder: Gary Van Doorn

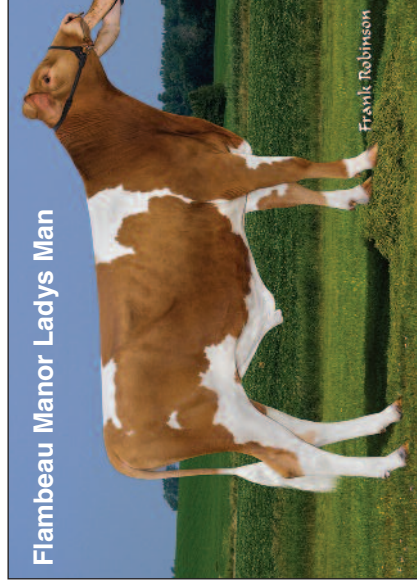
Owner: Lady's Man Syndicate & Select Sires

# FLAMBEAU MANOR LADYS MAN 78006572

Rel	Milk	BF	PT	F%	P%	F + P	F&L	Mam	SCC	Fert	GMI	DS	PLI
34	339	15.6	9.7	-0.01	-0.04	16.0	0.8	1.5	0	-4.9	145	0.6	109

Born: 7 June 2015

GMI: 145



Flambeau Manor Ladys Man

## SNIDERS OPTION AARON 604670 A2/A2

Rel	Milk	BF	PT	F%	P%	F + P	F&L	Mam	SCC	Fert	GMI	DS	PLI
97	408	23.5	13.0	0.09	0.00	36.5	1.2	1.7	-4	-12.3	365	1.2	120

## JENSGOLDEN BIONIC OPTION 602643

Rel	Milk	BF	PT	F%	P%	F + P	F&L	Mam	SCC	Fert	GMI	DS	PLI
78	135	6.5	4.6	0.01	0.00	11.1	-0.2	-0.7	5	-9.3	74	1.7	-219

## CEDAR FRINGED ALTANN 3045188

Rel	Milk	BF	PT	F%	P%	F + P	F&L	Mam	SCC	Fert	GMI	DS	PLI
74	361	13.7	7.5	-0.07	-0.07	21.3	1.4	-6	-0.8	1360.0	78		

## TROTACRE JAY MR LUXURY 602751

Rel	Milk	BF	PT	F%	P%	F + P	F&L	Mam	SCC	Fert	GMI	DS	PLI
98	316	7.5	11	-0.06	0.01	18.5	0.2	0.9	14	1.3	176	1.8	122

## MARODORE BALDWIN LAURIE 3021790

Rel	Milk	BF	PT	F%	P%	F + P	F&L	Mam	SCC	Fert	GMI	DS	PLI
35	-47	-5.1	-1.8	-0.05	0.00	-6.8	-0.1	0.0	12	-1.7	-203	0.0	-270

## MARODORE AARONS LEVI ET 68025119 A2/A2

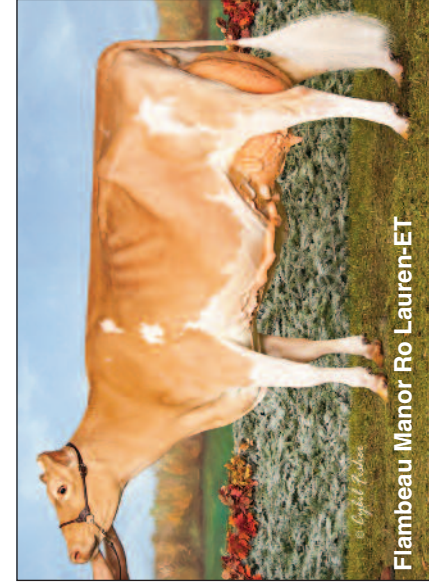
Rel	Milk	BF	PT	F%	P%	F + P	F&L	Mam	SCC	Fert	GMI	DS	PLI
85	344	10.8	9.6	-0.03	-0.02	20.4	1.4	2.3	-11	-3.2	230	-0.1	205

## FLAMBEAU MANOR RO LAUREN-ET 68043597

Rel	Milk	BF	PT	F%	P%	F + P	F&L	Mam	SCC	Fert	GMI	DS	PLI
54	161	7.2	6.8	-0.01	0.02	14.0	0.7	1.9	5	-5.9	71	0.0	58
Lac	Age	Milk lbs	Days	Fat %	Fat	Prt%	Prt	Pi					
1	2/00	14750	323	5.1	758	3.8	564	97					
2	3/00	22910	365	5.4	1230	3.8	864	DHIA					
3	4/02	24890	365	4.9	1231	3.5	875	DHIA					
4	5/07	22510	305	4.7	1063	3.4	755	97					



Flambeau Manor G Lauren



Flambeau Manor Ro Lauren-ET

## JENSGOLDEN PROKING ROYAL OAK 602216 A2/A2

Rel	Milk	BF	PT	F%	P%	F + P	F&L	Mam	SCC	Fert	GMI	DS	PLI
99	204	10.7	7.5	0.03	0.01	18.2	0.2	1.7	-5	-17.4	211	2.8	-160

## FLAMBEAU MANOR G LAUREN 3056014

Rel	Milk	BF	PT	F%	P%	F + P	F&L	Mam	SCC	Fert	GMI	DS	PLI
63	-3	3.9	-1.2	0.07	-0.02	2.7	-0.4	0.6	5	6.6	104	0.0	36
2/03	14720	310	4.7	695	3.2	473	DHIA						
3/03	22609	365	4.8	1078	3.4	776	DHIA						
4/06	26238	365	5.1	1335	3.3	843	DHIA						
5/11	25470	365	5.2	1334	3.3	843	DHIA						
8/00	19060	305	4.8	906	3.1	599	94						
10/00	16020	305	4.8	765	3.3	525	97						
LIFE	167310	2926	5.2	872	3.5	5867							

## Sexed semen £28.50 per straw

(£27.50 Levy members) + handling and delivery.

Conventional Semen available at £7.50 per straw (£6.50 for Levy members) regardless of size of order + handling and delivery. Delivery charges to Genus and other third parties at cost.

## V PROTEIN KING 598017

Rel	Milk	BF	PT	F%	P%	F + P	F&L	Mam	SCC	Fert	GMI	DS	PLI
81	-215	2.9	-4.2	0.15	0.04	-1.3	-0.2	0.1	-1	-3.9	29	0.8	-147

## JENSGOLDEN FAYETTE ORIANNA 2913954

Rel	Milk	BF	PT	F%	P%	F + P	F&L	Mam	SCC	Fert	GMI	DS	PLI
71	44	3.6	3.4	0.02	0.03	7.0	0.0	-0.5	6	-7.5	-70	0.0	-209

## ROZELYN PATMAR P GOLIATH 600974

Rel	Milk	BF	PT	F%	P%	F + P	F&L	Mam	SCC	Fert	GMI	DS	PLI
86	-64	1.5	-1.9	0.05	0.00	-0.4	-1.6	-0.2	-12	9.8	-13	-0.7	203

## FLAMBEAU MANOR PERFECT LORETTA 3043599

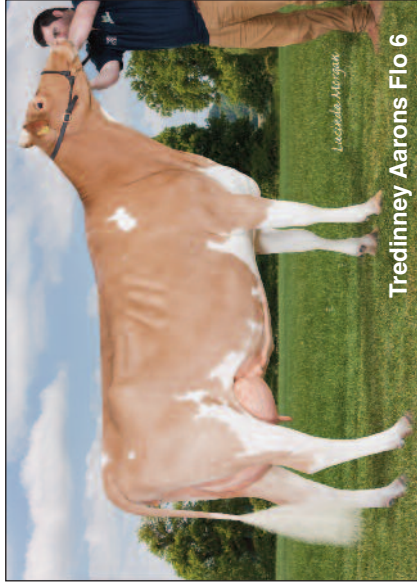
Rel	Milk	BF	PT	F%	P%	F + P	F&L	Mam	SCC	Fert	GMI	DS	PLI
51	5	1.9	1.80	0.03	0.03	*	-0.2	-0.2	-6	-6.7	-86	0.0	16

Date Issued: April 2017  
Breeder: DW, R J & J R Warren  
Owner Tredinney, St. Buryan  
Penzance TR19 6HX

## TREDINNEY IVANS FLO RIDER 43899

Rel	Milk	BF	PT	F%	P%	F + P	F&L	Mam	SCC	Fert	GMI	DS	PLI
41	77	10.3	6.5	0.10	0.06	16.8	1.4	1.4	-4	-0.4	214	0.3	249

Born: 12 August 2014  
**GMI: 214**



Tredinney Aarons Flo 6

### LES JAONNETS IRIS IVAN 20055011

Rel	Milk	BF	PT	F%	P%	F + P	F&L	Mam	SCC	Fert	GMI	DS	PLI
94	-140	-4.5	-4.0	0.01	0.01	-8.5	2.1	1.8	-1	2.0	3	-0.3	183

### TREDINNEY AARONS FLO 6 451564 EX92 (5YR)

Rel	Milk	BF	PT	F%	P%	F + P	F&L	Mam	SCC	Fert	GMI	DS	PLI
68	293	25.1	16.9	0.19	0.11	42.0	0.7	0.9	-6	-2.8	424	0.9	314
Lac	Age	Milk lbs	Days	Fat %	Fat	Prt%	Prt	Pi					
1	2/8	6875	305	5.48	377	3.92	270	116					
2	3/8	8355	305	5.74	479	4.35	363	137					
3	4/10	8987	305	5.01	450	3.70	332	119					



Tredinney Pedros Flo 4

### EDGEWATER MEADOWS YOGIBEAR 604917 A2/A2

Rel	Milk	BF	PT	F%	P%	F + P	F&L	Mam	SCC	Fert	GMI	DS	PLI
97	118	6.7	5.1	0.03	0.02	11.8	1.4	2.7	-2	-2.9	197	1.5	121

### LINDONS IRIS OF LES JAONNETS20000040

Rel	Milk	BF	PT	F%	P%	F + P	F&L	Mam	SCC	Fert	GMI	DS	PLI
74	-16	-2.4	-3.0	-0.03	-0.04	-5.4	1.2	-0.4	5	3.4	-7	0.0	96

**Semen available  
£7.50 per straw**  
(£6.50 Levy paying members) regardless of  
size of order + handling and delivery.  
**Delivery charges to Genus and other third  
parties at cost.**

### SNIDERS OPTION AARON 604670 A2/A2

Rel	Milk	BF	PT	F%	P%	F + P	F&L	Mam	SCC	Fert	GMI	DS	PLI
97	408	23.5	13.0	0.09	0.00	36.5	1.2	1.7	-4	-12.3	365	1.2	120

### TREDINNEY PEDROS FLO 4 443058 EX92(2) (5YR)

Rel	Milk	BF	PT	F%	P%	F + P	F&L	Mam	SCC	Fert	GMI	DS	PLI
70	-18	6.3	3.4	0.13	0.08	9.7	0.6	0.4	-6	-0.7	138	0.7	109
2/4	5946	305	4.71	280	3.47	206	90						
3/4	6987	305	5.08	355	3.78	264	105						
4/6	8475	305	4.67	396	3.50	297	102						
5/5	7059	305	4.32	305	3.44	243	83						

### TROTACRE LORAL TILLER 603341 A2/A2

Rel	Milk	BF	PT	F%	P%	F + P	F&L	Mam	SCC	Fert	GMI	DS	PLI
82	315	9.4	7.3	-0.04	-0.04	16.71	2.1	1.0	15	-11.4	132	2.4	-210

### EDGEWATER MEADOWS GOLIATH YOGI 3050104

Rel	Milk	BF	PT	F%	P%	F + P	F&L	Mam	SCC	Fert	GMI	DS	PLI
61	-81	3.8	-1.1	0.14	0.03	2.7	0.1	1.7	-7	8.1	225	0.0	191

### MAPLE LEAF LINDON SULTAN 910019

Rel	Milk	BF	PT	F%	P%	F + P	F&L	Mam	SCC	Fert	GMI	DS	PLI
98	-50	-4.2	-3.1	-0.03	-0.02	-7.3	0.5	-0.7	-7	3.4	-87	0.0	100

### DUTCHMILLS IRIS OF LES JAONNETS 900072

Rel	Milk	BF	PT	F%	P%	F + P	F&L	Mam	SCC	Fert	GMI	DS	PLI
69	-7	-7.9	-2.5	-0.14	-0.04	-10.40	0.0	8	2.9	-80	0.0	-46	

### JENSGOLDEN BIONIC OPTION 602643

Rel	Milk	BF	PT	F%	P%	F + P	F&L	Mam	SCC	Fert	GMI	DS	PLI
78	135	6.5	4.6	0.010	0.011	-0.2	-0.7	5	-9.3	74	1.7	-219	

### CEDAR FRINGED ALTANN 3045188

Rel	Milk	BF	PT	F%	P%	F + P	F&L	Mam	SCC	Fert	GMI	DS	PLI
74	361	13.7	7.5	-0.07	-0.07	21.3	1.4	-6	-0.8	136	0.0	78	

### TIRESFORD PEDRO 43490

Rel	Milk	BF	PT	F%	P%	F + P	F&L	Mam	SCC	Fert	GMI	DS	PLI
97	229	20.6	7.2	0.16	0.00	27.8	0.0	0.8	-10	-11.6	31	1.0	1.5

### ST SENARA FLOSSY 429480 GP82

Rel	Milk	BF	PT	F%	P%	F + P	F&L	Mam	SCC	Fert	GMI	DS	PLI
74	-306	-12.7	-5.90	0.04	0.10	-18.6	0.7	-0.2	2	6.1	13	0.0	7
2/1	4521	305	4.32	195	3.29	149	93						
3/4	6742	305	4.59	310	3.72	251	119						
4/5	6916	305	4.73	327	3.66	253	110						
5/4	6800	305	4.36	296	3.54	241	94						

## Inbreeding & Guernseys

by Sue Staples

We know that inbreeding levels are increasing in all breeds not just here in the UK but worldwide. The EGCS has recently been given access to data for all pedigree registered Guernsey's in the UK going back 30 years and more. We wanted to see exactly where the Guernsey breed in the UK stands with inbreeding and as most published figures are already five, or more, years out of date we wanted to know the current position.

In the 1980s there were a lot more Guernseys in the UK, a lot more herds and herds running their own bulls. In the pursuit of rapid genetic improvement, and coinciding with the decline in popularity of the Guernsey breed, breeders migrated to the use of artificial insemination and the introduction of bull semen from around the world became popular.

In common with other breeds the Guernsey breeder has overused many bulls in the past resulting in limited blood lines which unfortunately are reflected in the figures we see today.

The worrying news is that whilst the vast majority of animals have an inbreeding coefficient of 6% or less if we examine just this group of animals we see that the numbers are migrating away from the lower end ie 1% towards the higher end – 6%. This has to stop!

If we examine the animals which have an inbreeding coefficient between 0.1% and 6% for the same period it becomes apparent that whilst there are roughly still the same percentage of animals which have an inbreeding coefficient of below 6% they are migrating from the lower end of the scale to the higher end. The worry is that if we repeat the same exercise in 2020 we won't be looking at animals in the 0.1% to 6% bracket

but in the 6% - 10% bracket.

Why worry about inbreeding? Excessive inbreeding can result in the development of recessive genes such as the JH1C in the Jersey breed resulting in infertility if a positive cow is mated to a positive bull. **Any level of inbreeding will have a detrimental effect on milk production, fertility and general thriftiness.**

Levels higher than 6% must be avoided. Increased inbreeding leads to inbreeding depression, lower genetic variance and a higher frequency of lethal genes – ie the cow conceives but embryonic death occurs. The mating of two highly inbred individuals does not necessarily result in an animal with an even greater inbreeding coefficient if there are no common ancestors.

As a general rule of thumb check the pedigree of the animal to be mated and the bull pedigree, if they have ancestors in common then use an alternative.

---

## Inbreeding In Guernseys Part Two

by Dr Maurice Bichard

Inbreeding is measured by the frequency with which the two genes received from an individual's sire and dam are identical copies of one in their common ancestor. At the extreme, having two identical copies of a harmful recessive gene can give rise to an embryo failure, or a lethal disorder. But for any gene the effect is to reduce the genetic variation in future generations since only that ancestral gene can be passed down.

Most of today's bulls and many of our cows will become the ancestors of the breed in years to come. The fewer the ancestors the greater the chance that a future calf will feature one animal on both sides of its pedigree. Sue Staples reminded us in the Spring 2016 Newsletter that fewer bulls are being used. Not only have our total cow numbers declined, but we now rely on AI, both for convenience and as a powerful tool for genetic improvement. Given that we all want to increase the frequency of genes which lead to improved performance, type

or herd life, then a gradual rise in inbreeding is inevitable. We strive to recognise these genes in a sire or dam (through a progeny test or high PTA) and naturally want to spread them throughout the breed. All we can really do is to limit the rate of increase in inbreeding per generation. And here the key determinants are the numbers of bulls used each year across the breed, how related they are, and how many sons and daughters each one leaves. In practice this means what AI bulls are on offer, and how many straws are used from each. Looked at this way it is obvious that responsibility for controlling our inbreeding is mainly in the hands of those choosing each panel of young bulls, since they are siring some two-thirds of replacement heifers.

A useful target would be to limit the intensity of selection for further improvements so that it increases our average inbreeding by no more than 1% per generation. The EGCS Future of the Breed Committee has been trying to achieve this compromise ever since the Global Guernsey Breeding Programme was adopted in 2001.

There are now computer programs

which can help us do this more precisely. The Island farmers, who face exactly the same problem, have gained useful experience with one such program over several years. It helps them decide matings to produce future bulls, balancing predicted merit (for profit) and the relatedness of the bull-sires to the current cows.

Finally, if the optimum set of bulls is on offer then the farmer's task is quite simple. To organise the matings within his herd he needs only to use the different bulls fairly equally, and avoid any matings where the proposed bull and cow share more than one common grandparent.

### Date for your Diary

**EGCS Annual General Meeting and Field Days**

**6th and 7th September 2017**

Visit Hughenden Manor and Gardens  
(home of Benjamin Disraeli)  
Dinner at The Lambert Hotel  
Visit the Beechgroves herd