



The English Guernsey Cattle Society Newsletter

Michaelmas Cottage, Meadwell Farm, Kelly, Lifton, Devon, PL16 0HJ

Tel: 01822 870727 e-mail: office@guernseycattle.com www.guernseycattle.com Summer 2017

Welcome to the Summer Newsletter, published following the August Proof Run, to launch two new bulls and remind you about some that were featured in the Spring Newsletter. The weather here has turned decidedly autumnal but with 1st, 2nd and 3rd cut silage safely in the clamp, together with the wholecrop and 4th cut growing away nicely ready for baling, the seasons have been reasonably kind to us this year. An Indian summer throughout September and October would no doubt suit those of our members waiting to harvest maize, and another farming year completed.

We are coming up to a busy time of the year for the Society, with the two days of activities surrounding the Annual General Meeting (6th and 7th September) hosted by our President, Colin Gleed in and around High Wycombe, nearly upon us. By the time you receive this Newsletter I envisage the AGM will have taken place so I thank those who were able to attend, supporting Colin in the final stages of his Presidency and to welcome in our President for 2017 – 2018, Andrew Payling of the Oxlynch herd in Gloucestershire.

UK DAIRY DAY

The following week is the Society's first visit to the UK Dairy Day on Wednesday 13th September. We have 15 stalls booked and filled at this time, which is quite an achievement as the classes are all for in milk cows, we wish all our competitors well and I look forward to greeting you on the Society Stand in the Foyer of Hall 3 at The International Centre, Telford.

NATIONAL BREED SHOW

Moving into October, the national breed show will once more be incorporated into The Dairy Show at The Bath and West Showground, on 4th October with the Calf Classes held the previous evening. Please come along and support the Society, delicious refreshments will be served throughout the day, kindly prepared by James Bartlett and his family in our hospitality suite, where you can sit in comfort close to the Society Stand overlooking the Show Ring. Once again the Parfitt family's very successful Chew Moos ice cream will be available to purchase on the Guernsey Stand, this is very popular with the public, the queues bearing testi-

mony to this throughout the day.

We gratefully thank our many sponsors who fund most of the additional prize money for both the Cattle and Calf Classes. Please make an effort to join us for the Society's third Breed Show.

ABAB CALF SHOW

Finally our younger members will be travelling up to Malvern on the 13th October for The All Britain All Breeds Calf Show held over the weekend of the 14th and 15th October. We wish them all well and hopefully they will all be looking particularly smart in the Society's new showing uniform. We gratefully thank Quality Milk Producers, who along with EGCS have sponsored new shirts for Future Golden Breeders. Those who show on a regular basis will have received their order form, so if all goes to plan you should have your new shirts for both of these important shows. All subsequent shirts for Future Golden Breeders and those for adults should be ordered direct with the online ordering service of Farm Wardrobe based in Eire.

SPECIAL OFFER ON SEMEN

Having sorted your social diaries for the next 2 months the main purpose of the Newsletter is to introduce and supply the very best of Guernsey breeding potential to our members and customers. You will recognise one or two of the bulls, in particular the 2 American bulls from which we are selling sexed semen, Coulee Crest Fame Latimer and Flambeau Manor Ladys Man (conventional semen also available). We would encourage those of you who have not used Sexed semen before, to do your bit to increase the Guernsey population of heifers for which there is an ever growing demand, both at home and abroad. To entice you further the Society introduced a special offer in January whereby if you order, for example, 20 straws of Sexed semen you will receive 20 straws of young Mainland bull semen of your choice, free of charge. This offer applies to any size of order. **THERE HAS NEVER BEEN A BETTER TIME TO BUY SEMEN FROM THE SOCIETY – I AM WAITING FOR YOUR CALL!**

We also have two new Mainland bulls to introduce to you, Bourton Grumpy Claude and Trewey Victor Ezekiel.

BOURTON GRUMPY CLAUDE

A Grumpy son out of the consistent, long lived and fertile Clover family, the Grand Dam by Artis Premier was 15 years old when she left the herd after a very productive life, the G. Dam was in her 10th lactation and the Dam is currently in her 5th. Plus figures in Fat and Protein, excellent scores for Feet and Legs and Mammary. **TREWEY VICTOR EZEKIEL** by Beechgroves Ezekiel, who has maintained his place at or near the top of the Proof list for some time out of the Trewey Violet family with 3 generations of VG/EX. Again excellent constituent and type values, both of these bulls will help you fulfil the requirements of your milk contract in the future.

You will notice some subtle changes to the pedigrees featured here. Upon request from some of our members we have managed to squeeze in the figures for Locomotion and Stature for the first two generations of each bull. Locomotion is included as the score for Feet and Legs is considered too general when considering such traits as the difference between an animal being post legged and sickle hocked. Stature is also increasingly important, in particular to those members using any amount of sexed semen from American bulls. I would remind you that all these figures are predicted and the supply of sexed semen to our members is very much influenced by the bulls available to us, not all American bulls are qualified for EU and neither is sexed semen collected from all. Unfortunately until we can collect sexed semen from our own Mainland bulls, and that entails persuading AI Companies to take on third party work, we are rather restricted on what we can offer our members. The price of semen will rise very slightly by 20p per straw to £7.70 (£6.70 to Levy members) on 1st September, to cover the increased cost of processing straws collected by UKSS. To help our members as much as possible we keep our margins on semen very tight, so this additional small cost is unfortunately unavoidable.

WORK WANTED

Mr David Bailey, Shaftsbury, Dorset is looking for work assisting a herdsman and in show preparation, for more details contact him direct on 01747 229205.

Caroline

Date issued: August 2017

Breeder/: E J Griffin & Son
Owner Briddlesford Lodge Farm
Wootton Bridge,, Ryde
Isle Of Wight, PO33 4RY



Briddlesford Foxglove James

BRIDDLESFORD FOXGLOVES JAMES 43884 A2/A2

Rel Milk	F	P	F%	P%	F+P	F&L	Mam	SCC	Fert	GMI	DS	Stat	Loco	PLI	
42	122	8.5	6.5	0.05	0.04	15.0	0.4	0.6	-4	2.5	191	0.6	0.4	0.6	173

Born: 11 November 2014

GMI: 191

EDGEWATER MEADOWS YOGIBEAR 604917 A2/A2

Rel Milk	BF	PT	F%	P%	F+P	F&L	Mam	SCC	Fert	GMI	DS	Stat	Loco	PLI	
97	106	6.0	4.8	0.02	0.02	10.8	1.4	2.7	-2	-3.0	190	1.5	1.7	2.3	111

LAITY FARM PRIMROSE 96 433299 EX95(3) (8YR) DM, CME

Rel Milk	BF	PT	F%	P%	F+P	F&L	Mam	SCC	Fert	GMI	DS	Stat	Loco	PLI	
75	7	-0.7	4.9	-0.02	0.08	4.2	-0.4	0.3	7	6.0	206	1.1	0.7	-0.5	129
3	5/0	8836	305	4.62	408	3.64	322	124							
5	7/6	9564	305	5.80	555	3.50	335	145							
AV	5Lac	8453	305	4.75	405	3.56	302	125							

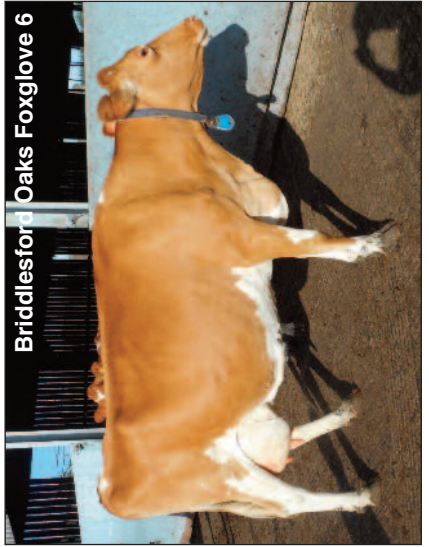
TREDINNEY YOGIS PRINCE 43611

Rel Milk	F	P	F%	P%	F+P	F&L	Mam	SCC	Fert	GMI	DS	Stat	Loco	PLI	
96	2	0.1	4.6	0.00	0.06	4.7	0.9	0.9	5	3.6	121	0.5	0.3	1.3	175

BRIDDLESFORD OAKS FOXGLOVE 6 449801 EX92(6YR)

Rel Milk	F	P	F%	P%	F+P	F&L	Mam	SCC	Fert	GMI	DS	Stat	Loco	PLI	
71	242	16.8	8.4	0.09	0.01	25.2	-0.2	0.3	-12	1.3	261	0.7	0.5	-0.2	171
1	2/0	5617	300	5.27	300	3.49	231	106							
2	3/0	7638	305	5.54	423	3.62	276	124							
3	4/0	6090	305	5.74	350	3.73	227	93							
4	5/1	9808	305	5.47	537	3.56	349	138							

Briddlesford Oaks Foxglove 6



TROTACRE LORAL TILLER 603341 A2/A2

Rel Milk	BF	PT	F%	P%	F+P	F&L	Mam	SCC	Fert	GMI	DS	Stat	Loco	PLI
82	296	8.6	7.0	-0.04	-0.03	15.6	1.2	1.0	16	-16.6	126	2.5	2.5	256

EDGEWATER MEADOWS GOLIATH YOGI 3050104

Rel Milk	BF	PT	F%	P%	F+P	F&L	Mam	SCC	Fert	GMI	DS	Stat	Loco	PLI
61	-81	3.8	-1.20	140.03	2.6	0.1	1.7	-6	7.9	221	*	185		

TROTACRE JAY MR LUXURY A1/A2 602751

Rel Milk	BF	PT	F%	P%	F+P	F&L	Mam	SCC	Fert	GMI	DS	Stat	Loco	PLI
98	318	7.7	11	-0.06	0.01	18.7	0.2	0.9	14	1.2	177	1.8	1.2	121

LAITY FARM PRIMROSE 81 428023 H81

Rel Milk	BF	PT	F%	P%	F+P	F&L	Mam	SCC	Fert	GMI	DS	Stat	Loco	PLI
66	-169	-3.6	-2.3	0.09	0.06	-5.9	0.3	0.4	0	3.6	73	0.4	58	
2/6	5331	305	4.79	255	3.70	197	114							

JENSGOLDEN PROKING ROYAL OAK A2A2 602216

Rel Milk	BF	PT	F%	P%	F+P	F&L	Mam	SCC	Fert	GMI	DS	Stat	Loco	PLI
99	203	10.77	40.03	0.01	18.1	0.2	1.7	-4	-17.4	209	2.7	-161		

BOSKENNA JUNE 423077 CSR EX94(4) (8YR) DM GDME CME

Rel Milk	BF	PT	F%	P%	F+P	F&L	Mam	SCC	Fert	GMI	DS	Stat	Loco	PLI
71	202	9.5	12.7	-0.01	0.11	22.2	-0.2	-0.5	10	5.3	337	0.8	164	
1	2/1	7281	305	4.82	351	3.51	256	135						
2	3/5	6292	305	4.65	292	3.88	244	110						
3	4/6	9485	305	4.44	421	3.71	352	142						
6	7/11	11272	305	4.40	496	3.63	409	136						

INSTEAD OBERON 42336

Rel Milk	BF	PT	F%	P%	F+P	F&L	Mam	SCC	Fert	GMI	DS	Stat	Loco	PLI
97	-93	-2.5	-1.60	0.40	0.03	-4.1	-1.2	-0.3	20	5.4	57	0.0	-140	

BRIDDLESFORD LUCKS FOXGLOVE 3 444829 CSR DM CM

Rel Milk	BF	PT	F%	P%	F+P	F&L	Mam	SCC	Fert	GMI	DS	Stat	Loco	PLI
74	230	1.2	4.7	-0.17	-0.05	5.9	-0.3	-1.1	-10	13.7	264	-0.8	241	
2	3/1	7313	305	4.98	364	3.55	259	110						
4	5/3	8202	305	4.96	407	3.45	283	113						
6	7/6	9308	305	4.80	447	3.35	312	110						

Semen available
£7.70 per straw

(£6.70 Levy paying members)
regardless of size of order
+ handling and delivery.
Delivery charges to Genus
and other third parties at
cost.

BOSKENNA JUNES ROYAL OAK 43549

Rel Milk	BF	PT	F%	P%	F+P	F&L	Mam	SCC	Fert	GMI	DS	Stat	Loco	PLI
98	229	11.2	8.1	0.00	0.01	19.3	-0.1	0.5	-22	-13.4	-72	1.4	1.5	-69

BRIDDLESFORD OBERONS FOXGLOVE 444839 H80

Rel Milk	BF	PT	F%	P%	F+P	F&L	Mam	SCC	Fert	GMI	DS	Stat	Loco	PLI	
73	103	10.9	5.1	0.10	0.03	16.0	-0.8	-0.1	3	11.5	376	-0.7	-0.5	-1.0	219
1	2/0	5177	305	5.92	307	3.74	194	92							
2	3/1	6661	305	6.13	408	3.85	256	112							
3	4/2	6522	305	5.37	351	3.68	240	89							
4	5/3	7389	305	5.44	402	3.63	268	102							
5	6/3	8251	305	5.61	463	3.56	294	115							
6	7/7	8101	305	5.27	427	3.54	287	115							

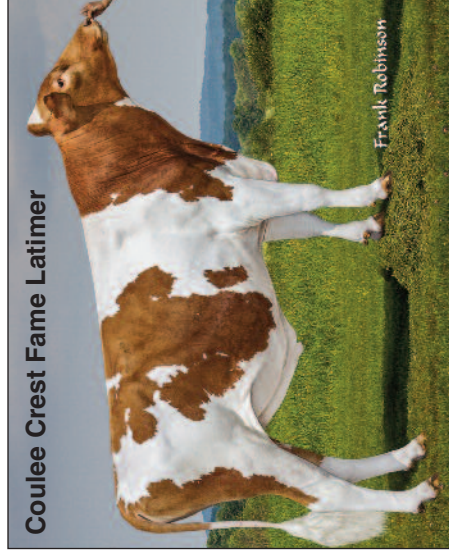
Date issued: August 2017
 Breeder/: Coulee Crest LLC,
 Owner: Cashton, WI 54619

COULEE CREST FAME LATIMER 78001154 A2/A2

Rel	Milk	F	P	F%	P%	F+P	F&L	Mam	SCC	Fert	GMI	DS	Stat	Loco	PLI
42	361	15.4	12.4	-0.04	-0.01	27.8	1.6	2.4	8	-5.0	215	*	2.1	*	78

Born: 4 January 2013
GMI: 215

Coulee Crest Fame Latimer



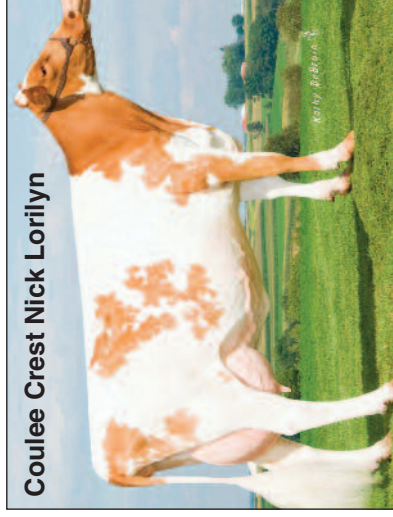
TROTACRE LORAL TILLER 603341

Rel	Milk	BF	PT	F%	P%	F+P	F&L	Mam	SCC	Fert	GMI	DS	Stat	Loco	PLI
82	296	8.6	7.0	-0.04	-0.03	15.6	1.2	1.0	16	-16.6	126	2.5	2.4	1.1	-256

R WAY ROYAL OAK FAYE 3068719

Rel	Milk	BF	PT	F%	P%	F+P	F&L	Mam	SCC	Fert	GMI	DS	Stat	Loco	PLI
52	41	-1.9	2.5	-0.07	0.02	0.6	1.2	1.3	13	-4.6	-88	*	2.4	*	-175

Coulee Crest Nick Lorilyn



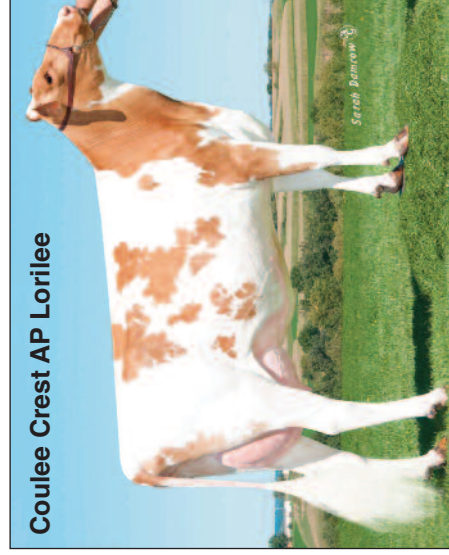
MILLBORNE TILLER FAYES FAME 68008443

Rel	Milk	F	P	F%	P%	F+P	F&L	Mam	SCC	Fert	GMI	DS	Stat	Loco	PLI
68	155	1.0	6.1	-0.11	0.02	7.1	2.1	3.0	26	-18.8	-229	2.6	2.9	0.7	-213

COULEE CREST AP LORILEE 68042571

Rel	Milk	F	P	F%	P%	F+P	F&L	Mam	SCC	Fert	GMI	DS	Stat	Loco	PLI
58	496	26.4	16.0	-0.04	-0.02	42.4	1.1	1.9	-1	-4.7	324	*	1.3	0.0	191

Coulee Crest AP Lorilee



INDIAN ACRES AMERICAN PIE 68016348

Rel	Milk	BF	PT	F%	P%	F+P	F&L	Mam	SCC	Fert	GMI	DS	Stat	Loco	PLI
74	218	1.3	3.9	-0.09	-0.04	5.2	1.7	1.3	-4	-4.3	55	0.5	1.0	1.1	95

COULEE CREST NICK LORILYN 68023988

Rel	Milk	BF	PT	F%	P%	F+P	F&L	Mam	SCC	Fert	GMI	DS	Stat	Loco	PLI
32	3	4.0	0.9	0.07	0.01	4.9	0.9	1.1	*	-4.1	-46	*	1.9	0.0	-158

TROTACRE MERCURY LORAL 602121

Rel	Milk	BF	PT	F%	P%	F+P	F&L	Mam	SCC	Fert	GMI	DS	Stat	Loco	PLI
79	94	-0.3	2.7	-0.05	0.00	2.4	-0.2	-0.2	8	-9.5	1	1.2	-300		

GREENWOOD M TILLIE ET 3013942

Rel	Milk	BF	PT	F%	P%	F+P	F&L	Mam	SCC	Fert	GMI	DS	Stat	Loco	PLI
61	226	3.8	4.7	-0.12	-0.04	8.5	0.2	0.1	7	-5.1	-77	*	-103		

JENSGOLDEN PROKING ROYAL OAK i 602216

Rel	Milk	BF	PT	F%	P%	F+P	F&L	Mam	SCC	Fert	GMI	DS	Stat	Loco	PLI
99	203	10.7	7.4	0.03	0.01	18.1	0.2	1.7	-4	-17.4	209	2.7	-161		

CALLUMLEA BILLBOARD FLOSSIE 3050310

Rel	Milk	BF	PT	F%	P%	F+P	F&L	Mam	SCC	Fert	GMI	DS	Stat	Loco	PLI
30	-98	-10.3	-2.9	-0.10	0.01	-13.3	0.5	-0.1	10	-5.8	-233	*	-373		

Sexed Semen £28.50 per straw
(£27.50 for Levy members)

+ Handling and Delivery
Delivery charges to Genus and
other third parties at cost.

IDLE GOLD E CHALLENGE - ET 604268

Rel	Milk	BF	PT	F%	P%	F+P	F&L	Mam	SCC	Fert	GMI	DS	Stat	Loco	PLI
92	39	7.2	3.9	0.07	0.03	11.1	0.8	-0.3	-6	-1.0	133	0.7	145		

INDIAN ACRES MM PISTACHIO PIE 3076310

Rel	Milk	BF	PT	F%	P%	F+P	F&L	Mam	SCC	Fert	GMI	DS	Stat	Loco	PLI
32	-262	-13.3	-8.2	-0.01	0.01	-21.5	1.4	1.6	14	3.4	-118	*	-177		

LANG HAVEN TILLER NICK-ET 68009162

Rel	Milk	BF	PT	F%	P%	F+P	F&L	Mam	SCC	Fert	GMI	DS	Stat	Loco	PLI
82	226	12.1	8.2	0.04	0.01	20.3	0.6	0.2	9	-12.1	188	3.0	-196		

FLAMBEAU MANOR DECISION LORI-ET 68012709

Rel	Milk	BF	PT	F%	P%	F+P	F&L	Mam	SCC	Fert	GMI	DS	Stat	Loco	PLI
32	-66	-1.9	-4.2	0.02	-0.04	-6.1	0.5	1.2	*	0.3	-107	*	-164		

Date issued: August 2017

Breeder/ Gary Van Doorn

Owner: Lady's Man Syndicate & Select Sires

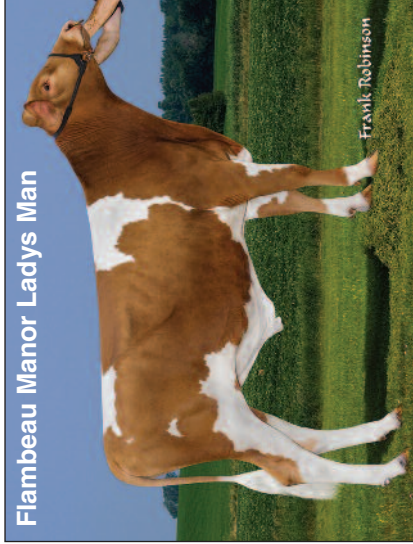
FLAMBEAU MANOR LADYS MAN 78006572

Rel	Milk	F	P	F%	P%	F+P	F&L	Mam	SCC	Fert	GMI	DS	Stat	Loco	PLI
39	173	1.0	4.0	-0.13	-0.04	4.9	0.8	2.0	5	-6.3	-53	*	1.0	*	-15

Born: 7 June 2015

GMI: -53

Flambeau Manor Ladys Man



SNIDERS OPTION AARON 604670 A2/A2

Rel	Milk	BF	PT	F%	P%	F+P	F&L	Mam	SCC	Fert	GMI	DS	Stat	Loco	PLI
97	411	23.3	13.3	0.09	0.00	36.6	1.2	1.7	-4	-12.0	368	1.2	1.3	1.6	123

MARODORE LUXURY LORRAINE 3074843

Rel	Milk	BF	PT	F%	P%	F+P	F&L	Mam	SCC	Fert	GMI	DS	Stat	Loco	PLI
65	177	0.3	4.7	-0.14	-0.02	5.0	0.0	1.1	9	0.4	41	*	-0.2	*	-18

MARODORE AARONS LEVI ET 68025119 A2/A2

Rel	Milk	BF	PT	F%	P%	F+P	F&L	Mam	SCC	Fert	GMI	DS	Stat	Loco	PLI
85	372	10.0	10.2	-0.06	-0.02	20.2	1.5	2.1	-9	-3.2	218	-0.1	0.1	1.5	215

FLAMBEAU MANOR RO LAUREN-ET 68043597

Rel	Milk	BF	PT	F%	P%	F+P	F&L	Mam	SCC	Fert	GMI	DS	Stat	Loco	PLI
55	125	6.6	5.2	0.01	0.01	11.8	0.7	2.0	6	-6.4	37	*	1.8	0.0	33
Lac	Age	Milk lbs	Days	Fat %	Fat %	Prt	Pi								
1	2/00	14750	323	5.1	758	3.8	564	97							
2	3/00	22910	365	5.4	1230	3.8	864	DHIA							
3	4/02	24890	365	4.9	1231	3.5	875	DHIA							
4	5/07	22510	305	4.7	1063	3.4	755	97							

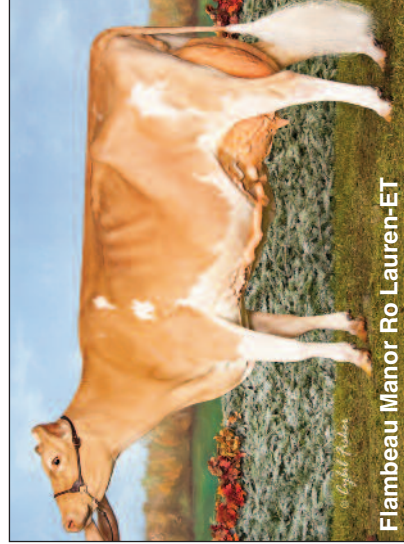


JENSGOLDEN PROKING ROYAL OAK 602216 A2/A2

Rel	Milk	BF	PT	F%	P%	F+P	F&L	Mam	SCC	Fert	GMI	DS	Stat	Loco	PLI
99	203	10.7	7.4	0.03	0.01	18.1	0.2	1.7	-4	-17.4	209	2.7	2.5	0.4	-161

FLAMBEAU MANOR G LAUREN 3056014

Rel	Milk	BF	PT	F%	P%	F+P	F&L	Mam	SCC	Fert	GMI	DS	Stat	Loco	PLI
63	6	4.1	-1.3	0.07	-0.03	2.8	-0.4	0.5	5	6.1	90	*	-0.1	0.0	27
2/03	14720	310	4.7	695	3.2	473	DHIA								
3/03	22609	365	4.8	1078	3.4	776	DHIA								
4/06	26238	365	5.1	1335	3.3	843	DHIA								
5/11	25470	365	5.2	1334	3.3	843	DHIA								
8/00	19060	305	4.8	906	3.1	599	94								
10/00	16020	305	4.8	765	3.3	525	97								
LIFE	167310	2926	5.2	872	3.5	5867									



JENSGOLDEN BIONIC OPTION 602643

Rel	Milk	BF	PT	F%	P%	F+P	F&L	Mam	SCC	Fert	GMI	DS	Stat	Loco	PLI
78	139	7.2	4.6	0.02	0.00	11.8	-0.1	-0.7	6	-10.4	79	1.7	-232		

CEDAR FRINGED ALTANN 3045188

Rel	Milk	BF	PT	F%	P%	F+P	F&L	Mam	SCC	Fert	GMI	DS	Stat	Loco	PLI
74	341	12.7	6.6	-0.06	-0.08	19.3	1.4	-6	-0.2	132	*	102			

TROTACRE JAY MR LUXURY 602751

Rel	Milk	BF	PT	F%	P%	F+P	F&L	Mam	SCC	Fert	GMI	DS	Stat	Loco	PLI
98	318	7.7	11	-0.06	0.01	18.7	0.2	0.9	14	1.2	177	1.8	121		

MARODORE BALDWIN LAURIE 3021790

Rel	Milk	BF	PT	F%	P%	F+P	F&L	Mam	SCC	Fert	GMI	DS	Stat	Loco	PLI
32	-134	-12.1	-3.3	-0.10	0.02	-15.4	0.0	0.0	14	-1.0	-181	*	-302		

Sexed semen £28.50 per straw

(£27.50 Levy members) + handling and delivery.

Conventional Semen available at £7.70 per straw

(£6.70 for Levy members) regardless of size of order + handling and delivery. Delivery charges to Genus and other third parties at cost.

V PROTEIN KING 598017

Rel	Milk	BF	PT	F%	P%	F+P	F&L	Mam	SCC	Fert	GMI	DS	Stat	Loco	PLI
81	-216	3.2	-4.1	0.15	0.04	-0.9	-0.2	0.2	0	-4.4	36	0.8	-149		

JENSGOLDEN FAYETTE ORIANNA 2913954

Rel	Milk	BF	PT	F%	P%	F+P	F&L	Mam	SCC	Fert	GMI	DS	Stat	Loco	PLI
71	39	3.1	3.1	0.02	0.03	6.2	0.0	-0.5	6	-6.4	-57	*	-184		

ROZELYN PATMAR P GOLIATH 600974

Rel	Milk	BF	PT	F%	P%	F+P	F&L	Mam	SCC	Fert	GMI	DS	Stat	Loco	PLI
86	-81	-0.1	-2.7	0.04	0.00	-2.8	-1.6	-0.2	-12	14.5	-37	-0.8	246		

FLAMBEAU MANOR PERFECT LORETTA 3043599

Rel	Milk	BF	PT	F%	P%	F+P	F&L	Mam	SCC	Fert	GMI	DS	Stat	Loco	PLI
51	-12	1.7	1.30	0.04	0.03	2.9	-0.2	-0.2	-5	-6.6	-90	*	13		

Date issued: August 2017

Breeder: P C & Mrs C G Cox

Owner: D W, R J & J R Warren
Tredinney, St Buryan,
Penzance TR19 6HX



Bourton Grumpy Claude pictured July 2015

BOURTON GRUMPYS CLAUDE 43876 A2/A2

Rel	Milk	F	P	F%	P%	F+P	F&L	Mam	SCC	Fert	GMI	DS	Stat	Loco	PLI
42	64	9.0	6.5	0.11	0.08	15.4	1.2	1.9	-1	1.5	274	0.5	0.8	1.0	286

Born: 12 September 2014

GMI: 274

MARODORE GOLIATHS RONALD 603218 A2/A2

Rel	Milk	BF	PT	F%	P%	F+P	F&L	Mam	SCC	Fert	GMI	DS	Stat	Loco	PLI
92	155	3.8	2.6	-0.03	-0.03	6.4	-0.8	0.2	5	6.4	17	0.0	0.2	-1.2	82

ROZELYN PATMAR P GOLIATH 600974

Rel	Milk	BF	PT	F%	P%	F+P	F&L	Mam	SCC	Fert	GMI	DS	Stat	Loco	PLI
86	-81	-0.1	-2.7	0.04	0.00	-2.8	-1.6	-0.2	-12	14.5	-37	-0.8	246		

MARODORE PENDERS RONETTE 3000058

Rel	Milk	BF	PT	F%	P%	F+P	F&L	Mam	SCC	Fert	GMI	DS	Stat	Loco	PLI
71	276	1.2	5.9	-0.21	-0.05	7.1	-0.2	-0.8	15	1.1	31	*	-61		

GOLDEN J OAK GRINCH 3070844

Rel	Milk	BF	PT	F%	P%	F+P	F&L	Mam	SCC	Fert	GMI	DS	Stat	Loco	PLI
68	258	9.8	7.6	-0.05	-0.01	17.4	1.0	1.4	-1	-7.1	20	*	2.1	*	-8

JENSGOLDEN PROKING ROYAL OAK 602216 A2/A2

Rel	Milk	BF	PT	F%	P%	F+P	F&L	Mam	SCC	Fert	GMI	DS	Stat	Loco	PLI
99	203	10.77	40.03	0.01	18.1	0.2	1.7	-4	-17.4	209	2.7	-161			

ELJO MAGIC GLENNIS 3034184

Rel	Milk	BF	PT	F%	P%	F+P	F&L	Mam	SCC	Fert	GMI	DS	Stat	Loco	PLI
32	113	0.2	3.6	-0.09	0.00	3.8	-0.1	-0.1	0	-3.0	-44	*	-29		
2/6	5331	305	4.79	255	3.70	197	114								

GOLDEN J RONALD GRUMPY 604960 A2/A2

Rel	Milk	F	P	F%	P%	F+P	F&L	Mam	SCC	Fert	GMI	DS	Stat	Loco	PLI
94	107	6.3	5.0	0.03	0.02	11.3	0.6	2.0	-5	0.1	172	0.2	0.3	-0.2	242

BOURTON CLOVER 24 445610 EX90 DM CME

Rel	Milk	F	P	F%	P%	F+P	F&L	Mam	SCC	Fert	GMI	DS	Stat	Loco	PLI
73	21	11.6	7.9	0.19	0.13	19.5	1.8	1.8	3	3.0	375	0.7	1.3	2.1	329
1	2/7	6100	305	5.18	3.73	228	121								
2	3/8	6602	305	5.25	3.86	255	132								
3	4/9	7187	305	5.61	3.85	276	137								
4	5/11	7747	301	5.83	3.77	292	128								
5	6/11	8809	305	5.86	3.68	325	126								

Semen available
£7.70 per straw
(£6.70 Levy paying members)
regardless of size of order
+ handling and delivery.
Delivery charges to Genus
and other third parties at
cost.

TROTACRE LORAL TILLER 603341 A2/A2

Rel	Milk	BF	PT	F%	P%	F+P	F&L	Mam	SCC	Fert	GMI	DS	Stat	Loco	PLI
82	296	8.6	7.0	-0.04	-0.03	15.6	1.2	1.0	16	-16.6	126	2.5	-256		

EDGEWATER MEADOWS GOLIATH YOGI 3050104

Rel	Milk	BF	PT	F%	P%	F+P	F&L	Mam	SCC	Fert	GMI	DS	Stat	Loco	PLI
61	-81	3.8	-1.20	140.03	2.6	0.1	1.7	-6	7.9	221	*	185			
1	2/1	7281	305	4.82	3.51	256	135								
2	3/5	6292	305	4.65	2.92	3.88	244	110							
3	4/6	9485	305	4.44	4.21	3.71	352	142							
6	7/11	11272	305	4.40	4.96	3.63	409	136							

EDGEWATER MEADOWS YOGIBEAR 604917 A2/A2

Rel	Milk	BF	PT	F%	P%	F+P	F&L	Mam	SCC	Fert	GMI	DS	Stat	Loco	PLI
97	106	6.0	4.8	0.02	0.02	10.8	1.4	2.7	-2	-3.0	190	1.5	1.7	2.3	111

Bourton Clover 42 - full sister to Claude



ARTIS PREMIER 42044

Rel	Milk	BF	PT	F%	P%	F+P	F&L	Mam	SCC	Fert	GMI	DS	Stat	Loco	PLI
99	-349	-11.1	-8.1	0.11	0.06	-19.2	0.3	1.0	-4	6.9	46	-1.5	1112		

BOURTON CLOVER 12745

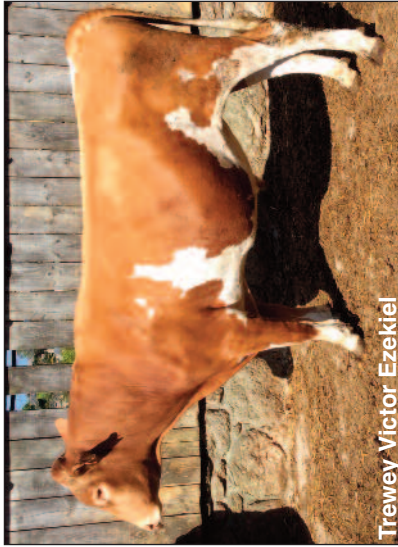
Rel	Milk	BF	PT	F%	P%	F+P	F&L	Mam	SCC	Fert	GMI	DS	Stat	Loco	PLI
*	*	*	*	*	*	*	*	*	*	*	*	*	*	*	*
5		4241	305	4.74	201	3.57	151	97							
6		5281	305	5.21	275	3.39	179	120							
7		5215	277	4.81	251	3.44	179	119							

BOURTON CLOVER 3 429230 VG86 DM GDM

Rel	Milk	BF	PT	F%	P%	F+P	F&L	Mam	SCC	Fert	GMI	DS	Stat	Loco	PLI
75	-370	-3.6	-2.5	0.28	0.18	-6.1	*	*	-4	9.2	264	*	*	*	269
2	3/11	4738	305	5.43	257	3.95	187	115							
5	7/3	5964	305	5.75	343	3.87	231	113							
6	8/4	6281	305	5.75	361	3.93	247	110							
7	9/9	6960	305	5.70	397	3.87	269	117							
9	12/1	6232	305	5.53	345	3.79	236	113							
10	13/4	5563	305	5.41	301	3.67	204	93							

Date issued: August 2017

Breeder: J A J H Mann
 Owner: Trewey Farm, Zennor
 Cornwall TR26 3DA



Trewey Victor Ezekiel

TREWEY VICTOR EZEKIEL 43889 A2/A2

Rel Milk	F	P	F%	P%	F+P	F&L	Mam	SCC	Fert	GMI	DS	Stat	Loco	PLI	
42	159	12.4	7.7	0.11	0.03	20.0	1.3	0.7	-13	3.7	264	0.7	0.9	1.6	235

Born: 19 May 2015

GMI: 264

SPRING WALK ICY ICEBERG 68001358 A2A2

Rel Milk	BF	PT	F%	P%	F+P	F&L	Mam	SCC	Fert	GMI	DS	Stat	Loco	PLI	
95	352	13.1	14.2	-0.01	0.03	27.3	-0.5	-1.7	8	0.7	209	1.6	1.7	-0.9	-31

TROTACRE ENHANCER LEWIS 603342 A2A2

Rel Milk	BF	PT	F%	P%	F+P	F&L	Mam	SCC	Fert	GMI	DS	Stat	Loco	PLI
79	459	12.7	12.9	-0.06	-0.02	25.6	0.4	0.0	0	-0.6	193	0.1	1.77	

LANTZ FARM TILLER ICY 3065440

Rel Milk	BF	PT	F%	P%	F+P	F&L	Mam	SCC	Fert	GMI	DS	Stat	Loco	PLI
70	258	10.3	7.8	-0.04	-0.01	18.1	0.7	-0.4	13	-1.4	76	*	-98	

BEECHGROVES ELINOR 14 443492 (2) (5YR) DM

Rel Milk	BF	PT	F%	P%	F+P	F&L	Mam	SCC	Fert	GMI	DS	Stat	Loco	PLI	
75	67	13.1	6.7	0.17	0.08	19.8	1.4	2.4	-10	5.3	412	2.1	1.7	2.2	289

EDGEWATER MEADOWS YOGIBEAR 604917 A2A2

Rel Milk	BF	PT	F%	P%	F+P	F&L	Mam	SCC	Fert	GMI	DS	Stat	Loco	PLI
97	106	6.0	4.80	0.02	0.02	10.8	1.4	2.7	-2	-3.0	190	1.5	1.11	

BEECHGROVES ELINOR 13 439880 EX92(3) (12YR) DM GDM GME

Rel Milk	BF	PT	F%	P%	F+P	F&L	Mam	SCC	Fert	GMI	DS	Stat	Loco	PLI
75	-48	4.8	2.3	0.13	0.07	7.1	0.7	1.6	-7	5.0	259	1.6	1.73	
2/6	5331	305	4.79	255	3.70	197	114							

BEECHGROVES EZEKIEL 43671

Rel Milk	F	P	F%	P%	F+P	F&L	Mam	SCC	Fert	GMI	DS	Stat	Loco	PLI	
97	384	16.6	16.7	0.02	0.05	33.3	0.8	0.9	-16	4.8	371	1.6	1.8	0.5	269

TREWEY VIOLET 13 447770 EX94(4) (8YR) DM

Rel Milk	F	P	F%	P%	F+P	F&L	Mam	SCC	Fert	GMI	DS	Stat	Loco	PLI	
71	-66	8.1	-1.4	0.20	0.01	6.7	1.8	0.4	-9	2.6	157	-0.2	-0.1	2.7	201
1	2/4	5110	305	4.88	249	3.29	168	90							
2	3/5	6450	289	5.06	326	3.42	220	107							
3	4/5	6625	305	5.26	349	3.61	239	98							
4	6/0	6856	305	5.46	374	3.60	247	102							
5	7/0	7225	305	5.46	395	3.62	261	105							
6	8/3	6985	5.52	386	3.54	247	108								

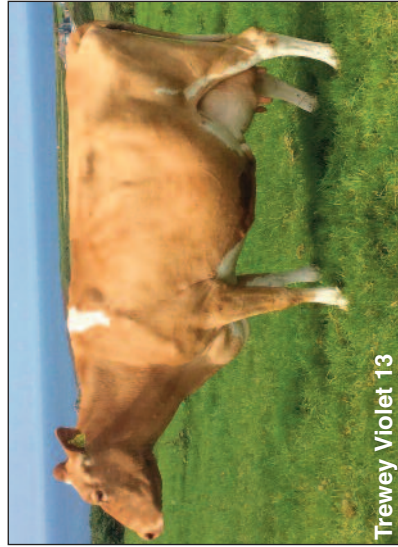
Semen available
£7.70 per straw
 (£6.70 Levy paying members)
 regardless of size of order
 + handling and delivery.
 Delivery charges to Genus
 and other third parties at
 cost.

SNIDERS OPTION AARON 604670 A2A2

Rel Milk	BF	PT	F%	P%	F+P	F&L	Mam	SCC	Fert	GMI	DS	Stat	Loco	PLI	
97	411	23.3	13.3	0.09	0.00	36.6	1.2	1.7	-4	-12.0	368	1.2	1.3	1.6	123

TREWEY VIOLET 11 433057 VG87 (7YR)

Rel Milk	BF	PT	F%	P%	F+P	F&L	Mam	SCC	Fert	GMI	DS	Stat	Loco	PLI	
72	-623	-20.1	-14.6	0.20	0.11	-34.7	1.3	-1.4	-2	6.9	-105	-2.0	-1.9	1.8	13
2	4/2	4793	277	5.34	256	3.86	185	102							
3	5/3	5378	305	5.16	278	3.85	207	102							
4	6/5	5249	305	5.02	264	3.82	201	93							
5	7/5	4781	288	4.91	235	3.78	181	85							
6	8/5	5370	305	5.26	283	3.76	202	99							
7	9/5	5442	305	5.01	273	3.76	205	95							



Trewey Violet 13

JENSGOLDEN BIONIC OPTION 602643

Rel Milk	BF	PT	F%	P%	F+P	F&L	Mam	SCC	Fert	GMI	DS	Stat	Loco	PLI
78	139	7.2	4.60	0.02	0.00	11.8	-0.1	-0.7	6	-10.4	79	1.7	-232	

CEDAR FRINGED ALTANN 3045188

Rel Milk	BF	PT	F%	P%	F+P	F&L	Mam	SCC	Fert	GMI	DS	Stat	Loco	PLI
74	341	12.76	6.0	-0.06	-0.08	19.3	1.3	1.4	-6	-0.2	132	*	102	
1	2/1	7281	305	4.82	351	3.51	256	135						
2	3/5	6292	305	4.65	292	3.88	244	110						
3	4/6	9485	305	4.44	421	3.71	352	142						
6	7/11	11272	305	4.40	496	3.63	409	136						

TREWARNEVAS FAYETTE JASPERS PRINCE 42165

Rel Milk	BF	PT	F%	P%	F+P	F&L	Mam	SCC	Fert	GMI	DS	Stat	Loco	PLI
93	-337	-16.6	-10.90	0.00	0.02	-27.5	2.4	1.4	0	5.2	-68	0.5	13	

TREWEY VIOLET 4 432410 VG85 (9YR)

Rel Milk	BF	PT	F%	P%	F+P	F&L	Mam	SCC	Fert	GMI	DS	Stat	Loco	PLI
72	-515	-27.5	-13.6	-0.05	0.06	-41.10	*	5	8.8	-222	*	-147		
2	4/7	4765	233	4.37	208	3.59	171	91						
3	5/10	5739	305	4.56	262	3.62	208	108						
5	8/5	6334	305	4.05	256	3.57	226	110						