



The English Guernsey Cattle Society Newsletter

Scotsbridge House, Scots Hill, Rickmansworth, Herts WD3 3BB

Tel: 01923 695204/5 Fax: 01923 695215 www.guernseycattle.com Spring 2012

Welcome to the Spring Newsletter for 2012 which features a variety of new bulls for the new season and articles and figures to encourage you all to make the most informed decisions when keeping a homebred bull to run with heifers which may qualify for consideration in the Guernsey Global Breeding Plan.

On Page 2 you will see an article prepared by Digby Gribble which explains the close association between your Planned matings – Classification, Production and Longevity. The ultimate aim of GGBP is that the very best bulls are used for collecting semen and used on farm to run with heifers.

BULLS FOR SPRING 2012

To that end let me introduce the team of bulls we have selected for the first part of 2012, you will see that all of the bulls selected have a greatly improved Fertility score from some of those that have gone before whilst continuing to offer you improving scores for Milk and Mammary. Decisions being taken result directly from your response to the Fertility Survey conducted in 2011.

The Mainland bull which is on Centre at Cogent at the moment waiting for collection of both Conventional and Sexed semen is Leigh Grange Echos Yogi – a Yogi bear son out of a Springwalk lcy Iceberg dam, both of these bulls have been used in the scheme previously. Following the April Proof

Run this bull has an improved GMI of 332 and a Fertility score of -1.7. This bull is still in quarantine at the moment, but semen will be available from the end of May – forward orders are welcomed.

Our recently acquired bull from the USA is Lang Haven Grumpy Novak. Again a GMI of 288 accompanied by Milk at 436 kgs, a Mammary score of 1.81 and a Fertility Score of -2.4 will make him very attractive to many members.

Our Island Representative is Les Jaonnets Twinkles Troy by Pine Ridge Double L. I would point out that this bull has tested A1/A2, but the decision to bring him was made on the diversity of his breeding background and the fact that many of you have used Double L to good effect and would want to take advantage of his milk score of 465 kgs and his excellent Mammary score of 2.2 Because of his A1/A2 status there are limited straws available but we can bring in more if demand dictates.

Finally we are marketing Tredinney Yogis Prince as a Proven Sire @ £15 per straw, reduced to £14 to Levy Paying members. He has also been chosen as Sire of Sires to be used in planned matings.

On Page 8 you will find a list of the Top 30 cows by PLI which will, in theory, produce the next crop of bull calves for the Bull scheme. The cows on the list printed in blue have bull calves on the ground which are being considered for the GGBP

scheme. We would ask that if one of your cows appears on that list and she is not yet in calf, you order 3 straws of Prince per cow as part of a planned mating when you place your next regular semen order. If a cow is already in calf, can you inform either Digby or myself of the Sire she has been served to and the date she is due to calve, so we can keep a precise record of the calves that are due.

DISCOUNT ON SEMEN ORDERS

At the Council Meeting on the 6th March an additional discount was introduced on larger orders to Levy paying members; if you place a composite order of 30 straws of Conventional semen from Young or Proven bulls you will receive a further discount of £1 per straw, taking the price down to £10 per straw

NEW MEMBERS

In conclusion the Society is always looking to recruit new members. NMR and CIS records suggest there are still a number of commercial herds that have not been approached together with many mixed herds where Guernseys are present.

We would ask that, whenever you get the opportunity, you enquire of your suppliers and advisers if they are aware of Guernsey herds or mixed herds with Guernseys, in your area.

Using GMI to continue Guernsey Breed Progress

At the March 2012 EGCS Council meeting I prepared an analysis of the last three years Classification results of the Guernsey heifers seen by the HUK classifiers and grouped them by score/grade and then averaged their production PTA's (predicted transmitting ability).

There was a significant correlation between the score and PTA, with the highest scored group having the highest production PTA's as the tables below demonstrates.

The analysis below is of course only possible after the event, but Council asked me to look and see if the outcome could be predicted and so I have looked at the heifers scored less than 70 points in each of the last 3 years and looked at what the pedigree tells us. Unfortunately a large number of the dams had not been classified and no picture emerges as of those dams classified they fell into every grade but there was more similarity when looking at the GMI's of the dams.

| 2011 | Heifers | %Grade | Milk | Fat | Fat% | Prot | Prot% | £PLI | GMI |
|------|---------|--------|------|-----|-------|------|-------|------|-----|
| >85 | 45 | 10% | 184 | 6.7 | -0.03 | 5.5 | -0.01 | £45 | 125 |
| >80 | 233 | 51.7% | 131 | 4.9 | -0.02 | 3.4 | -0.02 | £26 | 76 |
| >75 | 97 | 21.5% | 79 | 3.5 | 0.0 | 2 | -0.01 | £12 | 45 |
| >70 | 37 | 8.2% | 38 | 1.4 | 0.0 | 0.2 | -0.01 | -£15 | -8 |
| >50 | 39 | 8.6% | 31 | 1.6 | 0.0 | -0.7 | -0.01 | -£18 | -15 |

| 2010 | Heifers | %Grade | Milk | Fat | Fat% | Prot | Prot% | £PLI | GMI |
|------|---------|--------|------|------|-------|------|-------|------|-----|
| >85 | 41 | 5.7% | 171 | 6.55 | -0.02 | 4.59 | -0.02 | £34 | 107 |
| >80 | 321 | 45% | 120 | 4.79 | -0.01 | 2.96 | -0.02 | £21 | 70 |
| >75 | 222 | 31.1% | 90 | 3.3 | -0.01 | 1.9 | -0.02 | £6.5 | 34 |
| >70 | 83 | 11.6% | 49 | 1.8 | 0.0 | 0.9 | -0.01 | -£7 | -1 |
| >50 | 47 | 6.6% | 80 | 1.6 | -0.03 | -1.7 | -0.02 | -£33 | - |

| 2009 | Heifers | %Grade | Milk | Fat | Fat% | Prot | Prot% | £PLI | GMI |
|------|---------|--------|------|------|-------|------|-------|------|------|
| >85 | 33 | 7.6% | 198 | 4.9 | -0.07 | 4.6 | -0.04 | £19 | 73 |
| >80 | 207 | 47.8% | 89 | 2.7 | -0.02 | 1.9 | -0.02 | £14 | 38 |
| >75 | 133 | 30.7% | 33 | 1 | 0.0 | 0.5 | 0.0 | £1 | 2 |
| >70 | 32 | 7.4% | -32 | -1.1 | 0.1 | -1 | 0.0 | -£18 | -47 |
| >50 | 28 | 5.6% | -67 | -3.3 | 0.0 | -2.9 | 0.0 | -£42 | -107 |

The percentage of dams that are minus for GMI stands at 76% (2009), 76% (2010) and 68% (2011) which I think is significant.

and the fact that it is the low scoring heifers who tend to be either "frail" and or have too much udder and are therefore more likely to be culled prematurely it

| Year | Sires | Av GMI | No.Minus GMI | Dams | Av GMI | No Minus GMI |
|------|-------|--------|--------------|------|--------|--------------|
| 2009 | 15 | -4 | 11 | 38 | -100 | 29 |
| 2010 | 29 | 90 | 7 | 47 | -84 | 36 |
| 2011 | 23 | 80 | 2 | 38 | -45 | 26 |

EGCS are able to produce lists of heifers in GMI order which will highlight those with low GMI and either allow the use of high GMI sires or the use of beef sires.

Given the shortage of heifers for sale at present

will help the breed to develop and maintain the progress of the last 10 years if matings are more focused.

D R Gribble

01963 440566 or 07971 415664

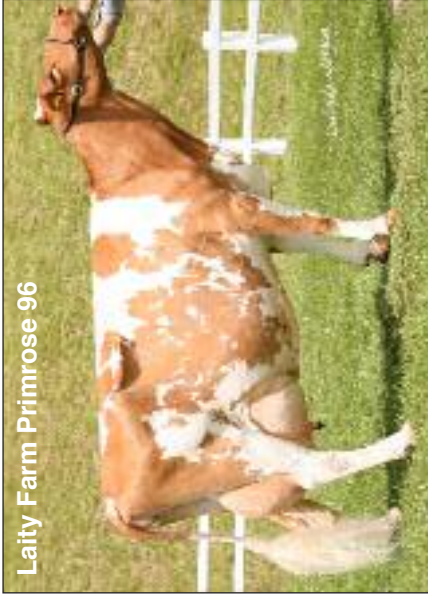
Date issued: April 2012
Breeder: J Warren
Owner: J Warren

TREDINNEY YOGIS PRINCE 43611

| Rel | Milk | BF | PT | BF% | PT% | F+P | F&L | Mam | SCC | Fert | PLI | GMI | TM |
|-----|------|------|------|------|------|------|-----|------|-----|------|-----|-----|------|
| 75 | 274 | 14.2 | 12.2 | 0.02 | 0.04 | 26.4 | 0.6 | 1.75 | -5 | -3.5 | £87 | 276 | 1.85 |

Born: 21/02/2006
GMI: 276

Laity Farm Primrose 96



TROTACRE LORAL TILER 603341

F&L: 1.2 Mam: 1.1 SCC: 13 Fert: -14.4 GMI: 292 TM: 2.9
Rel 82 437M 15.1F 10.7P -0.1F% -0.09P% 25.8F+P PLI: -£2

TROTACRE MERCURY LORAL 602121

F&L: -0.2 Mam: 0.2 SCC: 6 Fert: -7 GMI: - TM: -
Rel 79 228M 4.5F 6.1P -0.12F% -0.04P% 10.6F+PPLI: -£36

GREENWOOD M TILLIE 3013942

F&L: - Mam: - SCC: - Fert: - GMI: 122 TM: -
Rel: 58 373M 10.9F 8.6P -0.12F% -0.08P% 19.5F+P PLI: £22

ROZELYN PATMAR P GOLIATH 6000974

F&L: -1.2 Mam: 0.5 SCC: -14 Fert: 10.8 GMI: 93 TM: -0.2
Rel 93 76M 7.5F 2.4P 0.07F% -0.01P% 9.9F+P PLI: £126

EDGEWATER MEADOWS PKING UNIQUE 3033615

F&L: - Mam: - SCC: - Fert: - GMI: 227 TM: -
Rel 49 124M 18.5F 4.2P 0.23F% 0.00P% 22.7F+PPLI: £50

EDGEWATER MEADOWS YOGIBEAR 604917

F&L: 1.4 Mam: 2.9 SCC: -2 Fert: -3.4 GMI: 292 TM: 2.9
Rel: 96 326M 15.3F 9.9P 0 F% -0.03P% 25.2F+PPLI: £116

LAITY FARM PRIMROSE 96 433299 EX95 (3)

F&L: Mam: SCC: Fert: GMI: TM: -
Rel: 73 277M 9.8F 10.4P -0.06F% -0.01P% 20.2F+P PLI: £59
2y5m 305D 5262M 228F 4.34%F 183P 3.47%P -SCC95PI
4y0m 305D 8561M 385F 4.50%F 307P 3.59%P -SCC134PI
5y0m 305D 8836M 408F 4.62%F 322P 3.64%P -SCC124PI
6y0m 305D 10043M 451F 4.49%F 363P 3.61%P -SCC131PI
7y6m 305D 9564M 555F 5.80% 335P 3.50%P -SCC145PI

Tredinney Yogis Prince A2/A2

Semen available

Price £15.00 a straw

£14.00 levy paying members

for composite order of more than 20 straws

Yogis Prince has 9 classified dtrs avg 84.88pts 7VG & 2GP

Tredinney Yogis Gabrielle 2 - the best daughter of EIM Yogibear



TROTACRE JAY MR LUXURY 602751

F&L: 0.6 Mam: 1.5 SCC: 12 Fert: 1.8 GMI: 227 TM: 1.9
Rel 98 430M 11.1F 13.2P -0.17F% -0.04P% 24.3F+PPLI: £86

ROZELYN PRINCE JAY 600064

F&L: -0.3 Mam: -1.2 SCC: 14 Fert: - GMI: 193 TM: -0.5
Rel 82 187M 8.6F 11.6P -0.01F% 0.09P% 20.2F+P PLI: £44

TROTACRE MERCURY LORETTA 3001798

F&L: - Mam: - SCC: - Fert: - GMI: 234 TM: -
Rel 71 585M 18.3F 14.9P -0.17F% -0.1P% 33.2F+P PLI: £52

JENSGOLDEN PROKING ROYAL OAK 602216

F&L: 0.4 Mam: 2.4 SCC: -7 Fert: -15.9 GMI: 281 TM: 2.7
Rel 98 300M 14.0F 9.40P -0.01F% -0.02P% 23.4F+P PLI: £25

LAITY FARM PRIMROSE 60 411501

F&L: - Mam: - SCC: - Fert: - GMI: -223 TM: -
Rel 66 -471M -15.5F -11.8P 0.15F% 0.10P% 27.3F+P PLI: -£19

LAITY FARM PRIMROSE 81 428023 H81

F&L: - Mam: - SCC: - Fert: - GMI: 92 TM: -
Rel 65 16M 3.1F 2.1P 0.04F% 0.03P% 5.2F+P PLI: £24
2y6m 305D 5331M 255F 4.79%F 197P 3.7%P -SCC114PI
3y6m 86D 2047 89F 4.37%F 69P 3.38%P -SCC 0PI

Two of Tredinney Yogis Prince's daughters



Tredinney Prince Alicia 12



Tredinney Prince After Eight 2



Champion Nantwich Show 2011

Nuthurst Mayblossom

My apologies to Mr Ken Prestidge that this photo was left out of the Journal 2011 in error.

Breaking News: Woolsery Show in North Devon are introducing Coloured Classes in 2012, with a view to having Guernsey Classes in 2013 if there is sufficient interest this year, the Schedule can be viewed on www.woolseryshow.org.uk or contact Mrs S Williams on 01409 261288.

FOR SALE

Young bull for sale – **Cadbury Prettys Wizard** – Date of birth 01.08.11, bull calf out of Cadbury Hawk Pretty 86, Champion at both The Dairy Event and Livestock Show 2011 and The Welsh Dairy Event 2011 by Four Winds Magicman. Please contact Miss Cathryn Mills on 07860939901 or Richard Norman on 07968542729.

Simmental and Charolais semen available for commercial or pedigree use from P Clements and Partners on 01359 251233.

Date issued: April 2012

Breeder: D & K Langrehr

Owner: United GG

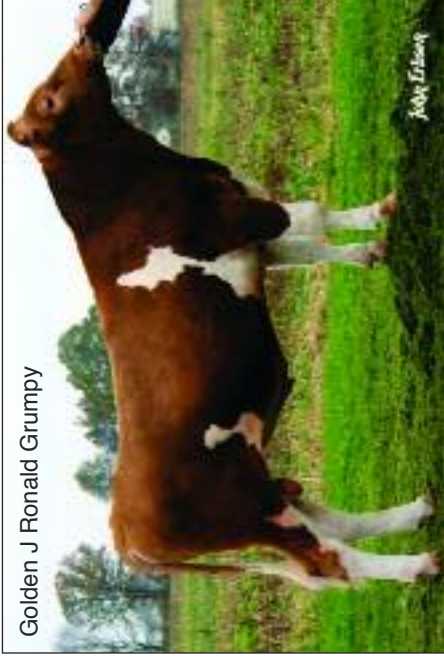
LANG HAVEN GRUMPY NOVAK 68042542

| Rel | Milk | Fat | Prot | Fat% | Prot% | F+P | F&L | Mam | SCC | Fert | GMI | TM | PLI |
|-----|------|------|------|-------|-------|------|------|------|-----|------|-----|------|------|
| 29 | 436 | 16.9 | 13.4 | -0.07 | -0.04 | 30.3 | -0.1 | 1.81 | 0 | -2.4 | 288 | 1.63 | £102 |

Born: 11/05/2010

GMI: 288

Golden J Ronald Grumpy



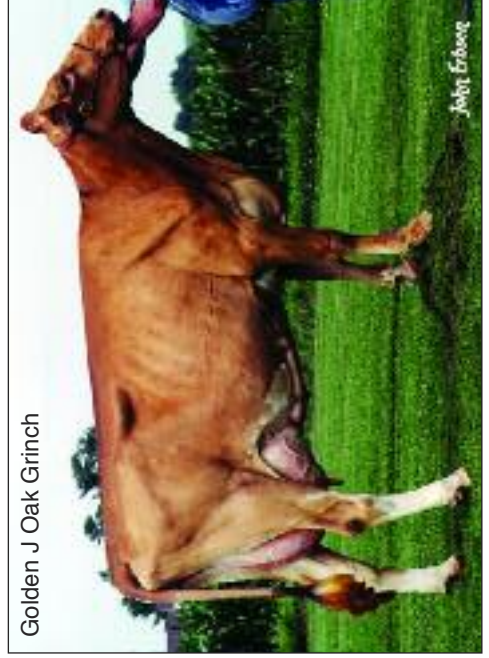
GOLDEN J RONALD GRUMPY 604960

| | | | | | | | |
|-----------|----------|--------|-----------|----------|---------|---------|-----------|
| F&L: -0.1 | Mam: 2.8 | SCC: 0 | Fert: 1.1 | GMI: 274 | TM: 2.2 | | |
| 69 | 369M | 15.9F | 10.6P | -0.03%F | -0.05%P | 26.5F+P | PLI: £113 |

LANG HAVEN NATURAL NOVELTY 68005592 VG88

| | | | | | | | |
|--------|--------|--------|---------|----------|---------|---------|----------|
| F&L: - | Mam: - | SCC: - | Fert: - | GMI: 301 | TM: - | | |
| Rel 46 | 502M | 17.9F | 16.1P | -0.11%F | -0.03%P | 34.0F+P | PLI: £90 |
| 2y7m | 365D | 11254M | 4.60%F | 520F | 3.70%P | 411P | -PI |
| 3y 11m | 365D | 13346M | 5.20%F | 694F | 3.70%P | 485P | -PI |
| 5y 3m | 365D | 9790M | 3.80%F | 370F | 3.80%P | 343P | -PI |

Golden J Oak Grinch



MARADORE GOLIATHS RONALD 603218

| | | | | | | | |
|-----------|----------|--------|-----------|---------|---------|-------|----------|
| F&L: -0.3 | Mam: 1.3 | SCC: 6 | Fert: 7.4 | GMI: 97 | TM: 0.9 | | |
| Rel 91 | 220M | 7.2F | 4.8P | -0.06%F | -0.05%P | 12F+P | PLI: £61 |

GOLDEN J OAK GRINCH 3070844 EX90

| | | | | | | | |
|--------|--------|--------|---------|----------|---------|----------|-----------|
| F&L: - | Mam: - | SCC: - | Fert: - | GMI: 312 | TM: - | | |
| Rel 58 | 471M | 19.0F | 13.4P | -0.06%F | -0.06%P | 32.45F+P | PLI: £112 |
| 2 lact | 4y 3m | 365D | 11927m | 555F | 4.7% | 379P | 3.20%P |

Lang Haven Grumpy Novak A2/A2

Semen available

Price £12.00 a straw

£11.00 levy paying members for composite order of more than 20 straws

ROZELYN PATMAR J GOLIATH 600974

| | | | | | | |
|-----------|----------|----------|------------|---------|----------|-----------------|
| F&L: -1.2 | Mam: 0.5 | SCC: -14 | Fert: 10.8 | GMI: 93 | TM: -0.2 | |
| Rel 86 | 76M | 7.5F | 2.4P | 0.07%F | -0.01%P | 9.9F+PPLI: £126 |

MARADORE PENDERS RONETTE 3000058 Ex

| | | | | | | | |
|--------|--------|--------|---------|---------|---------|---------|-----------|
| F&L: - | Mam: - | SCC: - | Fert: - | GMI: 78 | TM: - | | |
| Rel 69 | 361M | 5.9F | 8.4P | -0.20%F | -0.08%P | 14.3F+P | PLI: -£13 |

JENSGOLDEN PROKING ROYAL OAK 602216

| | | | | | | | |
|----------|----------|---------|-------------|----------|---------|---------|----------|
| F&L: 0.4 | Mam: 2.4 | SCC: -7 | Fert: -15.9 | GMI: 281 | TM: 2.7 | | |
| Rel 98 | 300M | 14.0F | 9.4P | -0.01%F | -0.02%P | 23.4F+P | PLI: £25 |

ELJO MAGIC GLENNIS 3034184

| | | | | | | |
|--------|--------|--------|---------|----------|---------|-----------------|
| F&L: - | Mam: - | SCC: - | Fert: - | GMI: 199 | TM: - | |
| Rel 51 | 358M | 11.9F | 10.4P | -0.09%F | -0.04%P | 22.3F+PPLI: £84 |

LANG HAVEN LORRY DECISION 603947

| | | | | | | |
|----------|--------|--------|------------|----------|---------|-----------------|
| F&L: 0.3 | Mam: 0 | SCC: 6 | Fert: -7.2 | GMI: 201 | TM: 1.0 | |
| Rel 73 | 488M | 17.6F | 11.9P | -0.01%F | -0.01%P | 29.5F+PPLI: £12 |

LANG HAVEN HOT SHOT NATASHA 3064890

| | | | | | | | |
|--------|--------|--------|---------|----------|--------|--------|---------|
| F&L: - | Mam: - | SCC: - | Fert: - | GMI: 204 | TM: - | | |
| Rel 75 | -63M | -3.3F | 3.6P | 0.00%F | 0.11%P | 0.3F+P | PLI: 30 |

TROTACRE JAY MR LUXURY 602751

| | | | | | | |
|----------|----------|---------|-----------|----------|---------|-----------------|
| F&L: 0.6 | Mam: 1.5 | SCC: 12 | Fert: 1.8 | GMI: 227 | TM: 1.9 | |
| Rel 98 | 430M | 11.1F | 13.2P | -0.17%F | -0.04%P | 24.3F+PPLI: £86 |

LANG HAVEN AMBIONIC NIKKI 3042363

| | | | | | | |
|--------|--------|--------|---------|----------|---------|-----------------|
| F&L: - | Mam: - | SCC: - | Fert: - | GMI: 176 | TM: - | |
| Rel 50 | 502M | 12.5F | 13.4P | -0.20%F | -0.08%P | 25.9F+PPLI: £25 |

LANG HAVEN DECISIONS NATURAL 604878

| | | | | | | | |
|-----------|-----------|--------|-----------|---------|---------|---------|----------|
| F&L: -0.5 | Mam: -1.2 | SCC: 6 | Fert: 0.2 | GMI: 54 | DS: 0.8 | | |
| Rel 67 | 307M | 9.3F | 10.5P | -0.1%F | -0.01%P | 19.8F+P | PLI: £53 |

LANG HAVEN LUXURY NIKITA 3070989

| | | | | | | | |
|--------|--------|--------|---------|----------|---------|---------|----------|
| F&L: - | Mam: - | SCC: - | Fert: - | GMI: 190 | TM: - | | |
| Rel 44 | 554M | 13.6F | 15.4P | -0.22%F | -0.07%P | 29.0F+P | PLI: £33 |
| lact 2 | 4y 4m | 305D | 6225M | 4.89%F | 304F | 3.73%P | 232P |

Date issued: April 2012
Breeder: E Durose
Owner: E Durose

LEIGHGRANGE ECHOS YOGI 43784

| Rel | Milk | BF | PT | BF% | PT% | F+P | F&L | Mam | SCC | Fert | PLI | GMI | TM |
|-----|------|------|------|------|------|------|------|------|-----|------|-----|-----|------|
| PA | 259 | 14.8 | 11.5 | 0.04 | 0.04 | 26.3 | 0.53 | 0.76 | -2 | -1.7 | £92 | 278 | 1.19 |

Born: 23.11/2010

Parent Average GMI: 278



EDGEWATER MEADOWS YOGIBEAR 604917

| | | | | | |
|----------|----------|---------|------------|----------|--------------------------|
| F&L: 1.4 | Mam: 2.9 | SCC: -2 | Fert: -3.4 | GMI: 292 | TM: 2.9 |
| Rel: 96 | 326M | 15.3F | 9.9P | 0 F% | -0.03P% 25.2F+PPLI: £116 |

LAITY FARM PRIMROSE 96 433299 EX95 (3)

| | | | | | |
|-----------|------|--------|-------|-------------------------|-----------------------|
| F&L: Mam: | SCC: | Fert: | GMI: | TM: - | |
| Rel: 73 | 277M | 9.8F | 10.4P | -0.06F% -0.01P% 20.2F+P | PLI: £59 |
| 2y5m | 305D | 5262M | 228F | 4.34%F | 183P 3.47%P -SCC95PI |
| 4y0m | 305D | 8561M | 385F | 4.50%F | 307P 3.59%P -SCC134PI |
| 5y0m | 305D | 8836M | 408F | 4.62%F | 322P 3.64%P -SCC124PI |
| 6y0m | 305D | 10043M | 451F | 4.49%F | 363P 3.61%P -SCC131PI |
| 7y6m | 305D | 9564M | 555F | 5.80% | 335P 3.50%P -SCC145PI |

TREDINNEY YOGIS PRINCE 43611

| | | | | | | |
|----------|-----------|---------|------------|---------------|----------|----------|
| F&L: 0.6 | Mam: 1.75 | SCC: -5 | Fert: -3.5 | GMI: 276 | TM: 1.85 | |
| Rel 75 | 274M | 14.2F | 12.2P | 0.02F% 0.04P% | 26.4F+P | PLI: £87 |

LEIGHGRANGE ICEBERGS ECHO 446844 H87

| | | | | | | | |
|----------|----------|--------|---------|----------|--------|---------|------------|
| F&L: 0.9 | Mam: 1.1 | SCC: - | Fert: - | GMI: 290 | TM: - | | |
| Rel 67 | 244M | 15.4F | 10.7P | 0.06%F | 0.03%P | 26.1F+P | PLI: £97 |
| 2y2m | 305D | 5518M | 285F | 5.17%F | 196P | 3.55%P | -SCC 139PI |
| 3y4m | 305D | 5462M | 272F | 4.97%F | 204P | 3.74%P | -SCC 117PI |

Leighrange Icebergs Echo



Leighrange Echos Yogi A2/A2

Semen available

Price £12.00 a straw

£11.00 levy paying members

for composite order of more than 20 straws

TROTACRE LORAL TILER 603341

| | | | | | | | |
|----------|----------|---------|-------------|----------|---------|---------|----------|
| F&L: 1.2 | Mam: 1.1 | SCC: 13 | Fert: -14.4 | GMI: 292 | TM: 2.9 | | |
| Rel 82 | 437M | 15.1F | 10.7P | -0.11F% | -0.09P% | 25.8F+P | PLI: -£2 |

EDGEWATER MEADOWS GOLIATH YOGI 3050104

| | | | | | | | |
|----------|----------|---------|------------|----------|--------|---------|----------|
| F&L: 0.2 | Mam: 2.1 | SCC: -7 | Fert: -1.7 | GMI: 167 | TM: - | | |
| Rel: 60 | 83M | 10.6F | 3.3P | 0.12F% | 0.01P% | 13.9F+P | PLI: £92 |

TROTACRE JAY MR LUXURY 602751

| | | | | | | |
|----------|----------|---------|-----------|----------|---------|-----------------|
| F&L: 0.6 | Mam: 1.5 | SCC: 12 | Fert: 1.8 | GMI: 227 | TM: 1.9 | |
| Rel 98 | 430M | 11.1F | 13.2P | -0.17F% | -0.04P% | 24.3F+PPLI: £86 |

LAITY FARM PRIMROSE 81 428023 H81

| | | | | | | | |
|--------|--------|--------|---------|---------|--------|--------|----------|
| F&L: - | Mam: - | SCC: - | Fert: - | GMI: 92 | TM: - | | |
| Rel 65 | 16M | 3.1F | 2.1P | 0.04F% | 0.03P% | 5.2F+P | PLI: £24 |

TROTACRE ENHANCER LEWIS 603342

| | | | | | | | |
|----------|----------|---------|-----------|----------|---------|---------|-----------|
| F&L: 1.3 | Mam: 0.7 | SCC: -4 | Fert: 3.3 | GMI: 248 | TM: 1 | | |
| Rel 79 | 508M | 16.6F | 13.4P | -0.13F% | -0.08P% | 30.0F+P | PLI: £108 |

LANTZ FARM TILLER ICY 3065440

| | | | | | | | |
|--------|--------|--------|---------|----------|---------|---------|----------|
| F&L: - | Mam: - | SCC: - | Fert: - | GMI: 245 | TM: - | | |
| Rel 69 | 472M | 20.4F | 13.2P | -0.04F% | -0.06P% | 33.6F+P | PLI: £35 |

ROZELYN ENHANCERS JORDAN 603289

| | | | | | | | |
|-----------|----------|--------|-----------|---------|---------|---------|----------|
| F&L: -0.4 | Mam: 1.2 | SCC: 2 | Fert: 2.4 | GMI: 90 | TM: 0.7 | | |
| Rel 96 | 280M | 7.8F | 5.00P | -0.08F% | -0.08P% | 12.8F+P | PLI: £52 |

LEIGHGRANGE JAKES ECHO 431193

| | | | | | | | |
|--------|--------|----------|---------|-----------|--------|---------|-----------|
| F&L: - | Mam: - | SCC: -16 | Fert: - | GMI: -175 | TM: - | | |
| Rel 69 | -344M | -12.2F | -10.4P | 0.09F% | 0.04P% | 22.6F+P | PLI: -£17 |

.SPRINGWALK ICY ICEBERG 68001358

| | | | | | | | |
|----------|-----------|---------|------------|----------|---------|---------|----------|
| F&L: 0.6 | Mam: -0.3 | SCC: -1 | Fert: -0.8 | GMI: 337 | TM: 0.7 | | |
| Rel 94 | 534M | 23.2F | 17.1P | -0.04F% | -0.03P% | 40.3F+P | PLI: £88 |

LEIGHGRANGE JORDANS ECHO 3 439099 H80

| | | | | | | | |
|---------|--------|--------|---------|----------|--------|---------|-----------|
| F&L: - | Mam: - | SCC: - | Fert: - | GMI: 220 | TM: - | | |
| Rel: 70 | -109M | -3.9F | -2.9P | 0.03F% | 0.02P% | -6.8F+P | PLI: £24 |
| 2y2m | 305D | 3755M | 176F | 4.70%F | 123P | 3.28%P | -SCC 79PI |
| 4y0m | 305D | 4782M | 228F | 4.78%F | 162P | 3.39%P | -SCC114PI |
| 5y0m | 305D | 4818M | 220F | 4.56%F | 167P | 3.46%P | -SCC106PI |
| 6y0m | 305D | 5383M | 231F | 4.29%F | 188P | 3.49%P | -SCC110PI |
| 7y1m | 305D | 5923 | 268F | 4.53%F | 201P | 3.39%P | -SCC110PI |

Date issued: April 2012

Owner: Mr & Mrs B J Martel
Breeder: Mr & Mrs B J Martel

LES JAONNETS TWINKLES TROY 20105014

| Rel | Milk | BF | PT | BF% | PT% | F+P | F&L | Mam | SCC | Fert | Loco | GMI | DS | PLI |
|-----|------|------|-----|-------|-------|------|-----|-----|-----|------|------|-----|-----|------|
| 36 | 465 | 19.4 | 9.0 | -0.05 | -0.13 | 28.4 | 0.6 | 2.2 | -14 | -2.6 | 0.7 | 237 | 0.9 | £100 |

Born: 29/11/2010

GMI: 237



ROZELYN PRINCE JAY 600064

F&L: -0.3 Mam: -1.2 SCC: 14 Fert: -5.4 Loco: 0.0 GMI: 193 DS: 0.9
Rel 82 187M 8.6F 11.6P -0.01F% 0.09%P 20.2F+P PLI: £44

TROTACRE MERCURY LORETTA EX 91 3001798

F&L: 0.6 Mam: 0.7 SCC: 5 Fert: -4.0 Loco: 0.3 GMI: 234 DS: 0.3
Rel 71 585M 18.3F 14.9P -0.17%F -0.10%P 33.2F+P PLI: £52

LILY LANE PERFECTO ET 598133

F&L: 1.4 Mam: 0.9 SCC: -16 Fert: -6.3 Loco: 0.6 GMI: -12 DS: 1.3
Rel 85 40M -5.3F 0.2P -0.14F% -0.02P% -5.1F+P PLI: £6

PINE RIDGE PENDER LEIGH EX90 2967042

F&L: -0.4 Mam: 0.2 SCC: 2 Fert: -5.0 Loco: 0.0 GMI: 153 DS: 0.0
Rel 59 269M 12.8F 7.4P -0.00F% -0.04P% 20.2F+P PLI: £8

TROTACRE JAY MR LUXURY 602751

F&L: 0.6 Mam: 1.5 SCC: 12 Fert: 1.8 Loco: 0.9 GMI: 227 DS: 2.0
Rel 98 430M 11.1F 13.2P -0.17F% -0.04P% 24.3F+P PLI: £86

PINE RIDGE PERFECTO LUXURY ET EX90 3032261

F&L: 0.1 Mam: 0.8 SCC: -11 Fert: -5.2 GMI: 197 DS: 0.7
Rel: 54 292M 14.2F 8.8P -0.00F% -0.04P% 22.3F+P PLI: £54
2y6m 305D 8.119M 382F 4.70%F 268P 3.30%P
4y2m 305D 10,723M 536F 5.00%F 386P 3.60%P
5y4m 305D 9,934M 487F 4.90%F 348P 3.50%P
3 lacts 9,592 468F 4.88% 334P 3.48%P

PINE RIDGE DOUBLE L ET 604312

F&L: 0.4 Mam: 2.9 SCC: -17 Fert: -3.6 Loco: 0.6 GMI: 187 DS: 0.8
Rel 83 214M 11.9F 4.0P 0.03F% -0.07P% 15.9F+P PLI: £93

LES JAONNETS PEDROS TWINKLE EX90 20060051

F&L: 0.8 Mam: 1.4 SCC: -9 Fert: -4.2 Loco: 0.9 GMI: 286 DS: 0.9
Rel 68 716M 26.8F 14.0P -0.12%F -0.19P% 40.8F+P PLI: £107
2y4m 305D 7,471M 404F 5.41%F 258P 3.45%P 75SCC
3y5m 305D 10,358M 571F 5.51%F 342P 3.31%P 70SCC
4y9m 305D 10,796M 644F 5.97%F 341P 3.16% 33SCC
3 lacts 9,542M 540F 5.66%F 314P 3.29%P 57SCC



Les Jaonnets Pedros Twinkle

Les Jaonnets Twinkles Troy A1/A2

Semen available

Price £12.00 a straw

£11.00 levy paying members for composite order of more than 20 straws

TIRESFORD PEDRO 43490

F&L: 0.1 Mam: 1.5 SCC: -17 Fert: 7.3 Loco: -0.1 GMI: 331 DS: 1.2
Rel 97 397M 26.1F 10.3P 0.13F% -0.07P% 36.4F+P PLI: £95

RINGOS TWINKLE OF LES JAONNETS VG86 20010195

F&L: 0.5 Mam: 0.5 SCC: -3 Fert: 2.0 Loco: 0.6 GMI: 93 DS: -0.7
Rel 73 468M 12.2F 7.4P -0.17F% -0.16P% 19.6F+P PLI: £37
2y3m 305D 6,682M 378F 5.65%F 235P 3.52%P 37SCC
3y5m 305D 9,081M 467F 5.14%F 308P 3.39%P 20SCC
2 lacts 7,881M 422F 5.36%F 271P 3.44%P 27SCC

LES JAONNETS ROSALIES RINGO 930021

F&L: 0.1 Mam: 0.0 SCC: -12 Fert: 5.5 Loco: -0.47 DS: 0.0
Rel 97 265M -0.4F 2.7P -0.24F% -0.12P% 2.3F+P PLI: 9

THE SPURS ALICIA 930093

F&L: - Mam: - SCC: - Fert: - GMI: 28 DS: -
Rel 74 206M 1.8F 4.9P -0.14F% -0.04P% 6.7F+P PLI: -14

ROSALEAS RINGO OF LES JAONNETS 930021

F&L: 0.1 Mam: 0.1 SCC: -11 Fert: 6.8 Loco: 0.4 GMI: -49 DS: 0.0
Rel 97 273M -0.9F 2.9P -0.25F% -0.12P% 2.0F+P PLI: £23

AMBIONICS DAIRYMILK OF LES JAONNETS 970066

F&L: -1.3 Mam: 0.4 SCC: 9 Fert: -1.3 Loco: -0.5GMI: 7 DS: 0.2
Rel 71 239M 1.2F 4.9P -0.06F% -0.12P% 6.1F+P PLI: -£31

Top 30 Cows by PLI April 2012

| PLI | Cows | Class | Sire | MGS | Lacts | Rel | Milk | Fat | Prot | F% | P% | GMI |
|--------|--------------------------------------|---------------|---------------------------------|------------------------------|-------|-----|---------|-------|-------|-------|-------|--------|
| 178 | BOURTON CLOVER 24 | H87 (88/86) | EDGEWATER MEADOWS YOGIBEAR | ARTIS PREMIER | 3 | 67 | 267 | 20.2 | 13.9 | 0.13 | 0.07 | 426 |
| 141 | BRYMOR GRACEFUL 15 | Ex 91 (96/88) | TREDINNEY SONICS HELIUM | BRYMOR ENTICING BILLY GGBP | 4 | 69 | 539 | 20.1 | 17.0 | -0.1 | -0.04 | 321 |
| 131 | ROSEWOOD PRECIOUS | EX 91 (92/90) | MEADOW COURT RED OAK | TROTACRE JAY MR LUXURY | 3 | 69 | 534 | 18.9 | 18.8 | -0.11 | -0.01 | 368 |
| 131 | ABER YOGIBEAR DUCHESS 5 | VG 87 (88/85) | EDGEWATER MEADOWS YOGIBEAR | BROWN EDEN TRADITION | 3 | 67 | 356 | 12.6 | 15.8 | -0.08 | 0.05 | 341 |
| 128 | BRIDDLESFORD DELTAS VIOLET | H 83 (83/82) | FOUR WINDS ROYAL DELTA | TROTACRE JAY MR LUCK | 3 | 67 | 397 | 24.5 | 13.3 | 0.09 | -0.02 | 348 |
| 125 | TREDINNEY HELIUMS CANDY 23 | Ex 90 (93/88) | TREDINNEY SONICS HELIUM | TROTACRE JAY MR LUXURY | 3 | 68 | 340 | 19.5 | 14.4 | 0.05 | 0.04 | 332 |
| 122 | WHITE LADIES MAYPOLE 28 | VG85 (84/84) | WHITE LADIES PRETTYTYS TALISMAN | ROZELYN PATMAR JAY GREG | 5 | 69 | 243 | 10 | 13.1 | -0.03 | 0.08 | 262 |
| 122 | KENVIN YOGI LYNNE 22 | Ex 90 (90/89) | EDGEWATER MEADOWS YOGIBEAR | GOLDEN WHEY MAGIC ENTICER | 3 | 68 | 193 | 13.3 | 8.8 | 0.07 | 0.03 | 286 |
| 121 | TREDINNEY YOGIS PRIMROSE 16 | Ex 90 (88/90) | EDGEWATER MEADOWS YOGIBEAR | TROTACRE JAY MR LUXURY | 3 | 68 | 502 | 19.4 | 14 | -0.08 | -0.07 | 320 |
| 121 | BEECHGROVES NIKITA 4 | VG 86 (87/85) | EDGEWATER MEADOWS YOGIBEAR | OLD HOMESTEAD DIVIDEND | 2 | 67 | 349 | 14.1 | 14.2 | -0.05 | 0.03 | 341 |
| 120 | TREVIDER AARON LINNETTE | VG 87 (90/86) | SNIDERS OPTION AARON | YELLOW CREEK IDEAL CLARION | 4 | 72 | 308 | 15.1 | 10 | 0.01 | -0.02 | 280 |
| 119 | BOURTON HARRIET 7 | Ex 90 (92/89) | ROZELYN GLACIERS HOLIDAY | LANCEWOOD FOCUS | 4 | 69 | 207 | 14.3 | 10.5 | 0.05 | 0.05 | 298 |
| 119 | CARNE HOOP | Ex 90 (87/91) | EDGEWATER MEADOWS YOGIBEAR | BLACKWATER ENHANCER AL | 4 | 69 | 486 | 13.2 | 13.2 | -0.17 | -0.07 | 248 |
| 118 | BRIDDLESFORD LUCKS LILY 10 | VG 86 (83/86) | TROTACRE JAY MR LUCK | ROZELYN PATMAR JAY GREG | 4 | 70 | 434 | 11.2 | 11.8 | -0.16 | -0.06 | 175 |
| 118 | BOURTON KELLY | H 85 (86/85) | EDGEWATER MEADOWS YOGIBEAR | LILY LANE T PENNY PENSION | 3 | 69 | 72 | 13.9 | 8.3 | 0.19 | 0.1 | 318 |
| 115 | BRIDDLESFORD OAKS VIOLET | H83 (83/84) | BOSKENNA JUNES ROYAL OAK | TROTACRE JAY MR LUCK | 2 | 67 | 578 | 23 | 18.6 | -0.08 | -0.03 | 388 |
| 112 | ROSEWOOD LUXURYS CREAMCUP | VG87 (87/87) | TROTACRE JAY MR LUXURY | KELSMOR MAYS SONNY BOY | 2 | 66 | 391 | 15.7 | 13.8 | -0.05 | 0 | 287 |
| 112 | ROSEWOOD WINNS BONNIE | H86 (85/86) | ROSEWOOD WINN (X2) | ROZELYN PATMAR JAY GLACIER | 2 | 57 | 265 | 15.3 | 13.8 | 0.05 | 0.07 | 330 |
| 102 | TREVIDER EH HAREBELL | VG 88 (90/87) | TREVIDER EVAS HOLIDAY | SNIDERS OPTION AARON | 2 | 69 | 289 | 18.6 | 9.5 | 0.08 | -0.02 | 294 |
| 102 | THORNTON AUREA 21 | Ex 90 (90/91) | SNIDERS OPTION AARON | JENSGOLDEN PROKING ROYAL OAK | 5 | 67 | 346 | 18.5 | 10.6 | 0.03 | -0.03 | 304 |
| 97 | LEIGHGRANGE ICEBERGS ECHO | H87 (85/88) | SPRING WALK ICY ICEBERG | ROZELYN ENHANCERS JORDAN | 3 | 67 | 244 | 15.4 | 10.7 | 0.06 | 0.03 | 290 |
| 83 | BRIDDLESFORD OAKS ANENOME | H84 (84/84) | BOSKENNA JUNES ROYAL OAK | TROTACRE JAY MR LUCK | 2 | 68 | 423 | 17.3 | 12.2 | -0.05 | -0.05 | 260 |
| 83 | NUTHURST PRINCESS 610 | H86 (86/86) | BOSKENNA JUNES ROYAL OAK | COULEE CREST SABER SONIC | 2 | 66 | 328 | 17.8 | 11.4 | 0.04 | -0.01 | 304 |
| 80 | TREDINNICK ANNEKA 3 | Ex 90 (87/91) | SUNNINGHILL PARK ROYAL OAK | YELLOW CREEK IDEAL CLARION | 3 | 68 | 649 | 22.9 | 16.9 | -0.13 | -0.1 | 321 |
| 80 | TREDINNEY ANDANTES ECLIPSE 11 | VG 89 (89/89) | TREDINNEY YOGIS ANDANTE | TRED.MAYP. ANDY PANDY | 2 | 61 | 221 | 7.1 | 4.6 | -0.06 | -0.06 | 126 |
| 78 | BEECHGROVES CARNATION 2 | VG 85 (85/83) | MARODORE GOLIATHS RONALD | TROTACRE MERCURY LORRY | 4 | 68 | 537 | 13.4 | 11.9 | -0.2 | -0.12 | 174 |
| 75 | GREENSFIELD ICY PHYLLIS | VG 88 (87/88) | SPRING WALK ICY ICEBERG | SHALFORD JUGGLER | 2 | 66 | 255 | 16.3 | 9.9 | 0.07 | 0.01 | 249 |
| 74 | HINXDEN GARNISH | Ex 91 (91/89) | SUNNINGHILL PARK ROYAL OAK | GOLDEN WHEY MAGIC ENTICER | 5 | 69 | 382 | 15 | 11.3 | -0.06 | -0.04 | 248 |
| 73 | TREDINNEY PEDROS FLO 3 | Ex92 (88/92) | TIRESFORD PEDRO | ROZELYN PATMAR JAY GLACIER | 4 | 68 | 184 | 11.4 | 6.7 | 0.04 | 0 | 197 |
| 3180.0 | | | | | | | 10319.0 | 468.0 | 359.0 | -0.4 | -0.2 | 8436.0 |
| 110.0 | | | | | 29.0 | Avg | 355.8 | 16.1 | 12.4 | 0.0 | 0.0 | 290.9 |