



# The English Guernsey Cattle Society Newsletter

Michaelmas Cottage, Meadwell Farm, Kelly, Lifton, Devon, PL16 0HJ

Tel: 01822 870727 e-mail: [office@guernseycattle.com](mailto:office@guernseycattle.com) [www.guernseycattle.com](http://www.guernseycattle.com) Autumn 2015

As I complete this Newsletter I have just heard the sad news that Graham Facks-Martin passed away on 11<sup>th</sup> September. Graham's passion for the Guernsey cow and his tireless work, over many years, for this Society is beyond measure. For those of us who knew Graham well, he was a brave, generous, no nonsense sort of man and he will be very much missed. God bless Graham.

Whilst most of us are fully pre-occupied with the continuing dip in the fortunes of the Dairy industry and the peaks and troughs of a less than helpful summer, I hope that I can ease the gloom a little by introducing the range of bulls available from the Society as we come to the end of 2015.

In addition this year the Society have decided to launch the Breed National Show at The SW Dairy Show on Wednesday 7<sup>th</sup> October at The Bath and West Showground – this has been a long held ambition of the Society and you will find all the details on Page 6. I would ask our members to make every attempt to support the Breed and the Society on this memorable day. We look forward to seeing you there.

## BULLS AVAILABLE AT THE END OF 2015

Again I am featuring Golden J Laredo Gotcha, available in both conventional and sexed semen, also Bourton Laredos Fernando (Conventional only) which you saw in the Spring Newsletter. In addition we are about to start marketing our next Mainland GGBP bull, Kelsmor Meadowsweets Lion King, who has just finished his collection at UKSS. For those of you looking for more traditional Guernsey traits this bull may be of interest – the longevity on the dam side reflects the excellent breeding of the Kelsmor herd under the management of the Emm family and continued by Mark Jones when

the herd passed to them. Add to that the positive figures for both Fat and Protein and the fertility figure of +3.4 – you could be on to a winner. These attributes are further backed up by the positives of breeding on the Sire side from the next generation of a Prince son when you consider Prince now has a GMI of 224 and Lion King has moved up to 202.

Brookleigh Geo Bruce – In an attempt to move Global Breeding forward we are about to import both sexed and conventional semen from this Australian bull from the well known herd of Lyndon and Joyce Cleggett. Following on from Marglyn Action Mervyn, who found favour with many of our members, this bull should be available to you in October.

## SIRE PROOFS AND INDEX VALUES

It has been brought to Council's attention that many of our members still struggle with the many figures that we supply you with as part of an animal's index and this impacts on your decisions when purchasing semen. EGCS has always sought to supply you with as much relevant information as possible and those figures apply equally to the semen that you may buy from our competitors, even if they choose not to supply it to you. To this end I have asked Dr Maurice Bichard to talk us through the meaning and implication of all those figures. He is preparing an article for this year's Journal, backed up by figures from some of the current bulls being marketed by our competitors which our fellow member, Sue Staples will convert into easy to understand tables, which we hope will help you further. In the meantime, Dr Bichard explains;

"It seems that some members continue to be confused by the Sire Proofs which are presented to them,

particularly for the indices of overall merit. The trouble is – THEY KEEP CHANGING! And members are not always clear why. They may remember a bull's PLI or GMI from 4 months or a year ago, and then compare it with that of a young bull which has only just been published.

Merit index values are changing all the time for a variety of reasons – more data, a change in goals, a base change.

The Golden rule is ALWAYS compare animals using values for the same Index published on the same day – they are published 3 times a year, April, August and December. These figures are all available from your Society, put together by an independent consultant (Dr Janet Roden) especially for us. I believe this topic deserves to be explained more fully in language familiar to all, and we shall try to do this in the forthcoming Journal."

If you have a question that you would like covered in Dr Bichard's forthcoming article please email it to me on [office@guernseycattle.com](mailto:office@guernseycattle.com) and I will forward it to him. In everyone's interest we all need to be clear on the Breed's Index which was designed to help all our breeders to take the Guernsey cow forward.

## ITEMS FOR SALE

Mrs Annette Goodall ([annette-goodall59@yahoo.co.uk](mailto:annette-goodall59@yahoo.co.uk)) has an EGCS Centenary Plate for sale - £10. These are also available from the Society.

EGCS Polo Shirts in royal blue are available from the Office in Small, Medium, Large and XL @ £15.00 (XXL sold out)

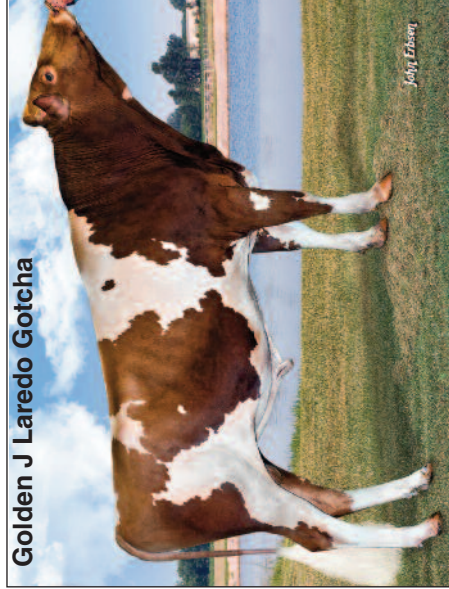
**PLEASE NOTE THAT THE  
NEXT COUNCIL MEETING  
WILL BE ON TUESDAY  
10<sup>TH</sup> NOVEMBER  
(NOT THE 3<sup>RD</sup>)**

Date issued: August 2015  
 Breeder: T & L Jenson, Amery, WI,  
 Owner: Select Sires

## GOLDEN J LAREDO GOTCHA 68032698 A2/A2

Rel	Milk	BF	PT	F%	P%	F + P	F&L	Mam	SCC	Fert	GMI	DS	PLI
pa	211	13.0	6.2	0.04	-0.02	19.1	0.3	2.1	4	-3.8	129	0.7	85

Born: 22 December 2012  
**GMI: 129**



Golden J Laredo Gotcha

<b>MARFRED MAXIE 603635</b>													
Rel	Milk	BF	PT	F%	P%	F + P	F&L	Mam	SCC	Fert	GMI	DS	PLI
74	273	5.8	5.0	-0.13	-0.06	10.8	-1.3	1.2	5	-12.2	-189	1.2	-201

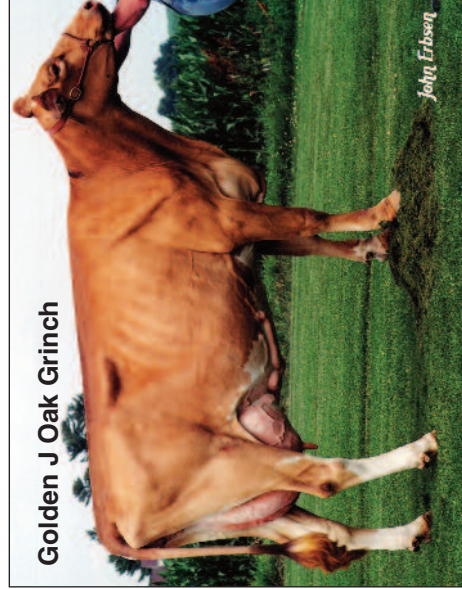
<b>OAK KNOB NUT LAVISH 3073678</b>													
Rel	Milk	BF	PT	F%	P%	F + P	F&L	Mam	SCC	Fert	GMI	DS	PLI
38	37	6.9	1.4	0.09	0.00	8.2	0.7	1.9	0	3.6	34	0.0	139

## OAK KNOB MAXIE LAREDO 68018049

Rel	Milk	BF	PT	F%	P%	F + P	F&L	Mam	SCC	Fert	GMI	DS	PLI
94	196	17.3	5.0	0.13	-0.02	22.3	-0.4	2.0	6	-5.6	106	0.3	63

## GOLDEN J CHALLENGE GRACIE 68021958

Rel	Milk	BF	PT	F%	P%	F + P	F&L	Mam	SCC	Fert	GMI	DS	PLI
50	226	8.6	7.3	-0.04	-0.01	16.0	0.9	2.1	2	-2.0	152	0.0	107



Golden J Oak Grinch

<b>IDLE GOLD E CHALLENGE - ET 604268</b>													
Rel	Milk	BF	PT	F%	P%	F + P	F&L	Mam	SCC	Fert	GMI	DS	PLI
92	82	8.6	4.3	0.08	0.03	12.9	1.0	-0.1	-6	-1.0	122	0.8	142

<b>GOLDEN J OAK GRINCH 3070844</b>													
Rel	Milk	BF	PT	F%	P%	F + P	F&L	Mam	SCC	Fert	GMI	DS	PLI
67	236	7.5	7.3	-0.07	-0.01	14.8	0.6	1.6	1	-8.6	-23	0.0	-61

## TAG LANE IDEAL SHARP 601474

Rel	Milk	BF	PT	F%	P%	F + P	F&L	Mam	SCC	Fert	GMI	DS	PLI
76	110	-1.7	1.1	-0.12	-0.04	-0.6	-0.9	1.5	17	-8.7	-1960.6	-199	

## LAMBRECHT PERFECTO MINNIE 3012544

Rel	Milk	BF	PT	F%	P%	F + P	F&L	Mam	SCC	Fert	GMI	DS	PLI
57	188	6.2	5.6	-0.05	-0.02	11.8	-1.0	0.9	-9	-3.8	33	0.0	-91

## OAK KNOB LUKE NUTRAGEOUS 604320

Rel	Milk	BF	PT	F%	P%	F + P	F&L	Mam	SCC	Fert	GMI	DS	PLI
*	*	*	*	*	*	*	*	*	*	*	*	*	*

## OAK KNOB NITRO LUELLA 3059348

Rel	Milk	BF	PT	F%	P%	F + P	F&L	Mam	SCC	Fert	GMI	DS	PLI
45	-21	9.0	0.0	0.180	0.190	-0.1	0.2	5	-4.8	-7	0.0	14	

**Semen available £11.00 per straw**  
 £10.00 Levy paying members for composite orders of more than 20 straws.  
 £1 discount for composite orders of 30 straws and over.  
 Surcharge of £1 per straw for orders delivered to Genus. Delivery surcharge  
 on orders of less than 10 straws dependant on size of order  
 Sexed semen available @ £30.00 per straw

## ROZELYN PATMAR EL GATO 602230

Rel	Milk	BF	PT	F%	P%	F + P	F&L	Mam	SCC	Fert	GMI	DS	PLI
70	-195	-7.9	-2.7	0.030	0.07	-10.60.5	0.4	-21	2.1	24	-0.7	142	

## PAFARMS FORTRESS CASSANDRA 3042855

Rel	Milk	BF	PT	F%	P%	F + P	F&L	Mam	SCC	Fert	GMI	DS	PLI
61	332	7.3	7.8	-0.15	-0.05	15.1	0.7	-0.4	-3	-5.4	-29	0.0	-49

## JENSGOLDEN PROKING ROYAL OAK 6022216

Rel	Milk	BF	PT	F%	P%	F + P	F&L	Mam	SCC	Fert	GMI	DS	PLI
98	172	8.2	6.0	0.000	0.1	14.2	0.3	1.9	-5	-17.3	-169	2.9	-176

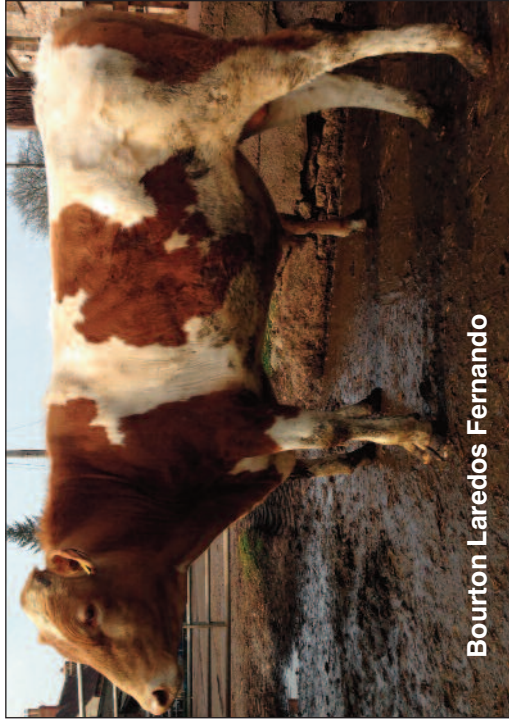
## ELJO MAGIC GLENNIS 3034184

Rel	Milk	BF	PT	F%	P%	F + P	F&L	Mam	SCC	Fert	GMI	DS	PLI
48	228	5.5	7.0	-0.10	-0.02	12.5	-0.1	0.4	0	-4.6	15	0.0	48

Date Issued: August 2015  
 Owner/ P C & Mrs C G Cox  
 Breeder: Meadwell Farm Kelly,  
 Lifton Devon, PL16 0HJ

<b>BOURTON LAREDOS FERNANDO 43850 A2/A2</b>													
Rel	Milk	BF	PT	F%	P%	F + P	F&L	Mam	SCC	Fert	GMI	DS	PLI
pa	80	12.1	5.4	0.17	0.07	17.5	0.0	1.4	-2	-5.6	109	0.4	107

Born: 22 October 2013  
**GMI: 109**



Bourton Laredos Fernando

<b>TAG LANE IDEAL SHARP 601474</b>													
Rel	Milk	BF	PT	F%	P%	F + P	F&L	Mam	SCC	Fert	GMI	DS	PLI
76	110	-1.7	1.1	-0.12	-0.04	-0.6	-0.9	1.5	17	-8.7	-1960.6	-199	

<b>LAMBRECHT PERFECTO MINNIE 3012544</b>													
Rel	Milk	BF	PT	F%	P%	F + P	F&L	Mam	SCC	Fert	GMI	DS	PLI
57	188	6.2	5.6	-0.05	-0.02	11.8	-1.0	0.9	-9	-3.8	33	0.0	-91

<b>OAK KNOB LUKE NUTRAGEOUS 604320</b>													
Rel	Milk	BF	PT	F%	P%	F + P	F&L	Mam	SCC	Fert	GMI	DS	PLI
*	*	*	*	*	*	*	*	*	*	*	*	*	*

<b>OAK KNOB NITRO LUELLA 3059348</b>													
Rel	Milk	BF	PT	F%	P%	F + P	F&L	Mam	SCC	Fert	GMI	DS	PLI
45	-21	9.0	0.0	0.180	0.019	0.0	-0.1	0.2	5	-4.8	-7	0.0	14

<b>MARFRED MAXIE 603635</b>													
Rel	Milk	BF	PT	F%	P%	F + P	F&L	Mam	SCC	Fert	GMI	DS	PLI
74	273	5.8	5.0	-0.13	-0.06	10.8							
F&L	Mam	SCC	Fert	GMI	DS	PLI							
-1.3	1.2	5	-12.2	-189	1.2	-201							

<b>OAK KNOB NUT LAVISH 3073678</b>													
Rel	Milk	BF	PT	F%	P%	F + P	F&L	Mam	SCC	Fert	GMI	DS	PLI
38	37	6.9	1.4	0.09	0.00	8.2							
F&L	Mam	SCC	Fert	GMI	DS	PLI							
0.7	1.9	0	3.6	34	0.0	139							

<b>OAK KNOB MAXIE LAREDO 68018049</b>													
Rel	Milk	BF	PT	F%	P%	F + P	F&L	Mam	SCC	Fert	GMI	DS	PLI
94	196	17.3	5.0	0.13	-0.0222	3.0	-0.4	2.0	6	-5.6	106	0.3	63

<b>BOURTON B FIONA 5 446435 EX90 (5YR)</b>													
Rel	Milk	BF	PT	F%	P%	F + P	F&L	Mam	SCC	Fert	GMI	DS	PLI
70	-36	6.8	5.8	0.20	0.1612	6.0	0.4	0.8	-10	-5.5	111	0.5	151
Lac	Age	M	D	Bf%	Bf	Pt%	Pt	Pi					
1	2/6	5975	305	5.07	303	3.90	233	115					
2	3/7	6489	305	5.40	350	3.84	249	121					
3	4/8	6831	287	6.54	447	3.78	258	135					
4	5/7	6835	272	5.88	402	3.71	254	109					
5	6/6	7702	273	5.78	446	3.71	286	107					

<b>TROTACRE LORAL TILLER 603341</b>													
Rel	Milk	BF	PT	F%	P%	F + P	F&L	Mam	SCC	Fert	GMI	DS	PLI
83	361	10.1	7.6	-0.12	-0.0717	7.1	2	0.9	16	-17.0	-218	2.6	-264

<b>RIVERWOOD GLACIER KUKU 3052931</b>													
Rel	Milk	BF	PT	F%	P%	F + P	F&L	Mam	SCC	Fert	GMI	DS	PLI
62	-32	7.3	3.6	0.160	0.0810	9.0	2	0.3	-6	-3.3	93	0.0	55

<b>GOLDEN WHEY MAGIC ENTICER 602480</b>													
Rel	Milk	BF	PT	F%	P%	F + P	F&L	Mam	SCC	Fert	GMI	DS	PLI
97	-47	-10.4	-2.2	-0.15	-0.01	-12.6	0.3	1.5	-12	-6.8	-207	0.2	23

<b>BICKFIELD FIONA 8 413669</b>													
Rel	Milk	BF	PT	F%	P%	F + P	F&L	Mam	SCC	Fert	GMI	DS	PLI
72	-466	-18.9	-13.00	120.13	-31.9	0.0	0.0	8	8.4	-86	0.0	-97	
1	3/2	3604	305	5.14	185	3.62	131	85					
2	4/3	4938	305	5.08	251	3.59	177	107					
3	5/4	4367	297	5.07	221	3.81	166	103					

<b>RIVERWOOD TILLER KHAN 605000</b>													
Rel	Milk	BF	PT	F%	P%	F + P	F&L	Mam	SCC	Fert	GMI	DS	PLI
96	-63	14.4	3.2	0.31	0.0917	6.0	3	0.5	-7	-13.7	-35	1.4	-34

<b>BOURTON B FIONA 428664 VG85(4YR)</b>													
Rel	Milk	BF	PT	F%	P%	F + P	F&L	Mam	SCC	Fert	GMI	DS	PLI
74	-195	-8.5	-3.1	0.05	0.12	-11.6	0.1	0.8	-6	1.2	-12	-0.9	107
Lac	Age	M	D	Bf%	Bf	Pt%	Pt	Pi					
1	2/6	4605	305	4.88	225	3.74	172	115					
3	4/8	5791	305	4.84	280	3.59	208	114					
4	5/10	6647	305	4.74	315	3.50	233	117					
5	7/0	6178	305	4.70	291	3.50	216	98					
6	8/2	6488	305	4.76	309	3.72	241	103					
7	9/3	6857	305	4.78	328	3.73	256	106					

**Semen available**  
**£11.00 per straw**  
 £10.00 Levy paying members for composite orders of more than 20 straws.  
 £1 discount for composite orders of 30 straws and over. Surcharge of £1 per straw for orders delivered to Genus.  
 Delivery surcharge on orders of less than 10 straws dependant on size of order

Date issued: August 2015

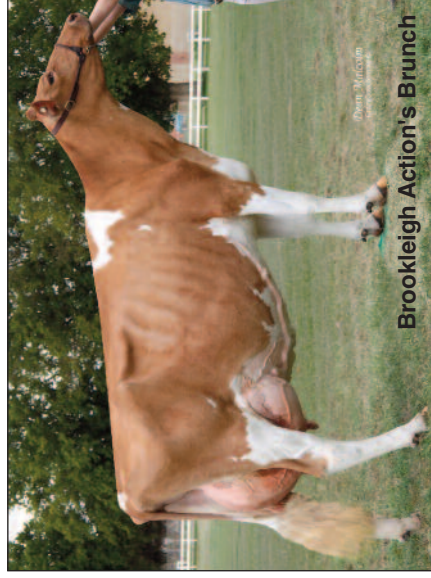
Breeder: Mr and Mrs L Cleggett,  
Owner: Brookleigh, Glencoe,  
SA 5291.

### BROOKLEIGH GEO BRUCE A00024742 A2/A2

Rel	Milk	BF	PT	F%	P%	F + P	F&L	Mam	SCC	Fert	GMI	DS	PLI
pa	89	4.3	2.3	0.00	-0.01	6.6	0.1	0.8	4	-3.8	-29	0.4	-2

Born: 26 December 2012

GMI: -29



Brookleigh Action's Brunch

### GOLDEN J LES GEORGE 68006130

Rel	Milk	BF	PT	F%	P%	F + P	F&L	Mam	SCC	Fert	GMI	DS	PLI
74	264	15.2	6.9	0.04	-0.03	22.1	0.2	1.5	0	-6.6	75	0.8	76

Rel	Milk	BF	PT	F%	P%	F + P	F&L	Mam	SCC	Fert	GMI	DS	PLI
*	*	*	*	*	*	*	*	*	*	*	*	*	*
	Milk	Fat	Fat%	Prt									
Total	41100	1843	4.48	1452									
Ave	5871	263	4.56	207									
ABV	-667	-12	0.43	-13									

### BROOKLEIGH ACTION'S BRUNCH S050006784 EX93

Rel	Milk	BF	PT	F%	P%	F + P	F&L	Mam	SCC	Fert	GMI	DS	PLI
*	*	*	*	*	*	*	*	*	*	*	*	*	*
	Milk	Fat	Fat%	Prt									
Total	41100	1843	4.48	1452									
Ave	5871	263	4.56	207									
ABV	-667	-12	0.43	-13									



Brookleigh GB Breakfast

### BROOKLEIGH BQ ACTION A00016304

Rel	Milk	BF	PT	F%	P%	F + P	F&L	Mam	SCC	Fert	GMI	DS	PLI
*	*	*	*	*	*	*	*	*	*	*	*	*	*
	Milk	Fat	Fat%	Prt									
Total	39591	2012	5.08	1505									
Ave	6599	335	5.71	251									
ABV	-690	9	0.95	-7									

### BROOKLEIGH GB BREAKFAST S03925508 VG89

Rel	Milk	BF	PT	F%	P%	F + P	F&L	Mam	SCC	Fert	GMI	DS	PLI
70	-37	-5.1	-2.2	-0.03	0.02	-7.3	0.5	0.0	5	0.6	-59	-0.5	24
	Milk	Fat	Fat%	Prt									
Total	39591	2012	5.08	1505									
Ave	6599	335	5.71	251									
ABV	-690	9	0.95	-7									

### FLAMBEAU MANOR TILLER LES-ET 604826

Rel	Milk	BF	PT	F%	P%	F + P	F&L	Mam	SCC	Fert	GMI	DS	PLI
75	109	4.3	2.0	-0.02	-0.03	6.3	0.1	2.1	6	-6.9	-55	0.2	-33

### GOLDEN J OAK GRINCH 3070844

Rel	Milk	BF	PT	F%	P%	F + P	F&L	Mam	SCC	Fert	GMI	DS	PLI
67	236	7.5	7.3	-0.07	-0.01	14.8	0.6	1.6	1	-8.6	-23	0.0	-61

Conventional  
&  
Sexed Semen  
available soon

### TROTACRE LORAL TILLER 603341

Rel	Milk	BF	PT	F%	P%	F + P	F&L	Mam	SCC	Fert	GMI	DS	PLI
83	361	10.1	7.6	-0.12	-0.07	17.7	1.2	0.9	16	-17.0	-2182.6	-264	

### FLAMBEAU MANOR ENHANCER LANA 3043629

Rel	Milk	BF	PT	F%	P%	F + P	F&L	Mam	SCC	Fert	GMI	DS	PLI
68	107	8.4	0.8	0.06	-0.059	20.0	1.6	-3	-1.2	10	0.0	-74	

### JENSGOLDEN PROKING ROYAL OAK 6022216

Rel	Milk	BF	PT	F%	P%	F + P	F&L	Mam	SCC	Fert	GMI	DS	PLI
98	172	8.2	6	0	0.01	14.2	0.3	1.9	-5	-17.3	-169	2.9	-176

### ELJO MAGIC GLENNIS 3034184

Rel	Milk	BF	PT	F%	P%	F + P	F&L	Mam	SCC	Fert	GMI	DS	PLI
48	228	5.5	7.0	-0.10	-0.02	12.5	-0.1	0.4	0	-4.6	15	0.0	48

### BROOKLEIGH QH QUEBEC A00007601

Rel	Milk	BF	PT	F%	P%	F + P	F&L	Mam	SCC	Fert	GMI	DS	PLI
62	-177	-14.8	-7.7	-0.11	-0.04	-22.5	-0.7	0.2	2	-4.6	-311	-0.1	-199

### BROOKLEIGH DREAM APPLAUDE S9512677 Ex3E

Rel	Milk	BF	PT	F%	P%	F + P	F&L	Mam	SCC	Fert	GMI	DS	PLI
*	*	*	*	*	*	*	*	*	*	*	*	*	*
	Milk	Fat	Fat%	Prt									
Total	54401	2163	3.98	1880									
Ave	6045	240	4.16	209									
ABV	193	-22	-0.72	-1									

### KOOKABURRA BOOLEE BOONOKE ET A00011665

Rel	Milk	BF	PT	F%	P%	F + P	F&L	Mam	SCC	Fert	GMI	DS	PLI
60	-142	-3.5	-2.3	0.06	0.04	-5.8	*	*	24	0.9	-15	*-105	

### BROOKLEIGH QH BINGO S9911292 VG89

Rel	Milk	BF	PT	F%	P%	F + P	F&L	Mam	SCC	Fert	GMI	DS	PLI
*	*	*	*	*	*	*	*	*	*	*	*	*	*
	Milk	Fat	Fat%	Prt									
Total	56732	2903	5.12	2098									
Ave	7092	363	6.80	262									

Date issued: August 2015  
Breeder: M H Jones & Partners  
Owner: Yewtree Farm  
Garway Common  
Garway, HR2 8RF

<b>KELSMOR MEADOWSWEETS LION KING 43874 A2/A2</b>													
Rel	Milk	BF	PT	F%	P%	F + P	F&L	Mam	SCC	Fert	GMI	DS	PLI
pa	33	1.2	1.5	0.01	0.03	2.8	0.2	0.3	3	3.4	105	-0.4	120

Born: 25 July 2014  
**GMI: 105**

<b>TREDINNEY YOGIS PRINCE 43611</b>													
Rel	Milk	BF	PT	F%	P%	F + P	F&L	Mam	SCC	Fert	GMI	DS	PLI
95	91	6.5	6.2	0.03	0.06	12.7	1.2	1.3	4	1.8	224	0.6	211

<b>EDGEWATER MEADOWS YOGIBEAR 604917</b>													
Rel	Milk	BF	PT	F%	P%	F + P	F&L	Mam	SCC	Fert	GMI	DS	PLI
97	151	8.6	5.2	0.02	0.11	3.8	1.5	2.7	-1	-3.8	129	1.6	123

<b>LAITY FARM PRIMROSE 96 433299 EX95(3) (8YR) DM, CME</b>													
Rel	Milk	BF	PT	F%	P%	F + P	F&L	Mam	SCC	Fert	GMI	DS	PLI
75	68	1.2	4.6	-0.02	0.07	5.8	-0.2	0.5	7	3.9	159	1.2	93
5	7/6	9564	305	5.80	555	3.50	335	145					

<b>TREVIDER AARON LINNETTE 442572 VG87 (2gens VG/EX) CME</b>													
Rel	Milk	BF	PT	F%	P%	F + P	F&L	Mam	SCC	Fert	GMI	DS	PLI
75	226	10.4	7.5	0.01	0.02	17.9	0.8	1.7	-12	-1.5	180	0.6	240

<b>SNIDERS OPTION AARON 604670</b>													
Rel	Milk	BF	PT	F%	P%	F + P	F&L	Mam	SCC	Fert	GMI	DS	PLI
97	387	21.9	10.8	0.05	-0.03	32.7	1.2	1.7	-3	-13.4	47	1.4	58

<b>TREDINNEY PRINCES LION KING 43832</b>													
Rel	Milk	BF	PT	F%	P%	F + P	F&L	Mam	SCC	Fert	GMI	DS	PLI
42.5	158.5	8.5	6.9	0.02	0.04	15.3	1.0	1.5	-4	0.1	202	0.6	226

<b>KELSMOR MEADOWSWEET 371 437263 EX90 (7YR)</b>													
Rel	Milk	BF	PT	F%	P%	F + P	F&L	Mam	SCC	Fert	GMI	DS	PLI
75	-92	-6.0	-3.8	-0.01	0.02	-9.8	-0.6	-0.9	9	6.8	8	-1.3	14
1	2/6	5186	266	4.38	227	313	163	97					
2	3/5	5056	293	4.67	236	3.56	180	100					
3	4/5	4573	271	4.36	200	3.59	164	88					
4	5/4	5560	305	4.82	268	3.49	194	114					
7	8/4	5861	305	4.43	259	3.35	196	99					
8	9/4	6030	305	4.66	281	3.38	204	111					
9	10/6	5783	305	4.47	259	3.29	191	110					

**Conventional  
Semen  
available soon**

<b>KELSMOR DAFFODILS GUARDIAN 42137</b>													
Rel	Milk	BF	PT	F%	P%	F + P	F&L	Mam	SCC	Fert	GMI	DS	PLI
96	-159	0.3	-1.5	0.15	0.07	-1.2	-0.8	-2.4	12	4.3	47	-1.4	-11

<b>KELSMOR MEADOWSWEET 318 427650 GP81</b>													
Rel	Milk	BF	PT	F%	P%	F + P	F&L	Mam	SCC	Fert	GMI	DS	PLI
-327	-21.1	-12.5	-0.08	0.04	-33.6	0.2	-0.3	7	8.9	-141	-1.9	-49	
1	2/10	4337	305	4.72	205	3.33	145	87					
2	3/9	4853	295	4.33	210	3.31	161	0					
3	4/9	4322	250	4.26	184	3.35	145	77					
4	5/9	4781	280	4.13	197	3.34	160	86					
5	6/11	5811	305	4.23	246	3.24	188	94					
6	8/2	5375	280	4.53	243	3.16	170	89					
7	9/2	4298	257	4.40	189	3.43	148	79					

<b>TRELOWETH LINNETTE 429654 EX94 (7) (11YR)</b>													
Rel	Milk	BF	PT	F%	P%	F + P	F&L	Mam	SCC	Fert	GMI	DS	PLI
75	-274	-10.3	-8.0	0.09	0.08	-18.3	0.9	0.8	-10	4.8	-10	0.5	99
2	3/4	5307	305	5.66	300	3.89	207	103					

<b>MAYS GUARDIAN 41811</b>													
Rel	Milk	BF	PT	F%	P%	F + P	F&L	Mam	SCC	Fert	GMI	DS	PLI
94	-24	-1.1	-2.7	0.00	-0.03	-3.8	*	8	7.2	58	-2.6	103	

<b>KELSMOR DAFFODIL 42 393989 DM, GDM</b>													
Rel	Milk	BF	PT	F%	P%	F + P	F&L	Mam	SCC	Fert	GMI	DS	PLI
67	-257	-11.0	-8.4	0.07	0.06	-19.4	0.0	0.0	12	8.2	-66	0.0	-89
3	4/8	5164	305	5.16	266	3.58	185	126					
4	5/8	5150	305	5.41	278	3.53	182	123					
6	7/7	5470	305	5.24	287	3.55	194	126					
9	11/7	5202	305	5.37	279	3.79	197	100					

<b>KELSMOR MEADOWSWEETS AMOS 42075</b>													
Rel	Milk	BF	PT	F%	P%	F + P	F&L	Mam	SCC	Fert	GMI	DS	PLI
97	-399	-20.8	-14.5	-0.03	-0.03	-35.3	-0.3	0.2	14	6.2	-202	-1.6	-154

<b>KELSMOR MEADOWSWEET 280 418500 GP83</b>													
Rel	Milk	BF	PT	F%	P%	F + P	F&L	Mam	SCC	Fert	GMI	DS	PLI
75	-600	-29.3	-17.8	0.02	0.14	-47.1	0.3	-0.9	-2	11.7	-163	-2.3	-59
1	2/11	3457	305	4.88	169	3.59	124	77					
2	4/0	4498	305	4.74	213	3.38	152	87					
5	7/6	5379	305	4.58	247	3.50	188	0					
8	10/8	4163	289	4.68	195	3.63	151	74					

## GUERNSEY NATIONAL SHOW AT THE SW DAIRY SHOW 2015

Following Council's agreement at the Meeting in June that we should make the SW Dairy Show the breed's national show in 2015, I have been in regular contact with The Royal Bath and West Show Society and the following has been put in place:

In addition to the regular sponsorship of Guernsey classes at the Show by NMR we have been fortunate to secure additional sponsorship for the 7 Guernsey classes on the Wednesday from the following:

- UK Sire Services
- Quality Milk Producers (2 classes)
- Chew Moos Ice Cream (Parfitt)
- Crediton Milling Company
- Briddlesford Farm Shop (Griffin)
- Golden Guernsey Milk (DR Gribble)

The Society will be sponsoring the Guernsey Championship.

In addition The Royal Bath and West Society have allowed EGCS to organise additional Guernsey only Calf Classes and Showmanship Classes on the previous Tuesday evening.

These will be sponsored by The Crediton Milling Company, The Cornwall Club (EGCS) and this Society (EGCS) I would respectively remind members that although the age upper limit in these classes is not specified these classes are intended to promote Future Golden Breeders and the en-

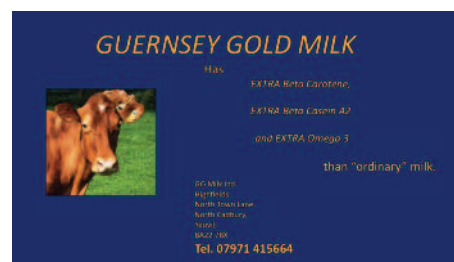
deavours of our younger members. I would therefore encourage our more mature members to concentrate their efforts on the main classes held on Wednesday.

I know Digby is trying to encourage as many members as possible to represent the Breed on this auspicious day and to ensure that the breed is well represented in quality and quantity.

The Society will have its normal Stand No. 178 adjacent to the Judging Rings. The Stand will be slightly bigger to accommodate Chew Moos Ice Cream who will be selling their excellent product throughout the day by prior agreement of The Royal Bath and West Show Society. We have also been offered and have accepted an additional hospitality suite just behind the Stand (next door to the Judges and Stewards Office) where our members, guests and sponsors will be able to enjoy a traditional West Country Cream Tea in comfort. The catering is being sponsored by the Wessex and Devon Clubs (EGCS) and I would be very grateful for any help that is available from our local members.

In conclusion I should like to thank our sponsors for their support at this difficult time in dairy farming and I look forward to seeing as many members as possible to support the Breed and the Society on the 7<sup>th</sup> October at Shepton Mallet.

Caroline



## BULLS FOR SALE

Two of our leading herds, Beechgroves and Briddlesford, have young bulls ready for work available for purchase as follows:

**Beechgroves Caesar (A2/A2)**, born 28.11.13 by Hartland View Harebell Blue (Springwalk Sherberts Mint) out of the EX91 Beechgroves Crystal (Instead Oberon)

**Beechgroves Nikita Nero (A2/A2)** born 01.04.14 by Dairyman Mint Phonze (Springwalk Sherberts Mint) out of Beechgroves Nikita 8 (Beechgroves Cornelius)

Please contact Gideon Lacey on 07720 266906 or [gid.lacey@hotmail.com](mailto:gid.lacey@hotmail.com) for further details

**Briddlesford Snowdrops Charles (A2/A2)** born 10.02.14, by Beechgroves Ezra out of Briddlesford Oaks Snowdrop 2 (Dairy strength VG85)

**Briddlesford Violets Andrew (A2/A2)** born 01.10.14 by Trewarnevas Ivor out of Briddlesford Oaks Violet (EX 90)

**Briddlesford Buttercups William (A2/A2)** born 05.09.14 by Briddlesford Daisys Alfred (GMI 204) out of Briddlesford Astronomers Buttercup H85. The Dam of the Sire is Briddlesford Gregs Daisy (VG89) – 10 lactations, 727,478 kgs @ 6% Fat.

Please contact Richard Griffin on 01983 882239 or [judi@briddlesfordlodgefarm.co.uk](mailto:judi@briddlesfordlodgefarm.co.uk) for further information

**Briddlesford Lilys Peter (A2/A2)** born 12.10.14, by Briddlesford Bluebells Leopold out of Briddlesford Oaks Bluebell 2 (EX93) out of Briddlesford Double L's Lily.

**Briddlesford Lilys Richard (A2/A2)** born 25.10.14 by Tredinney Yogis Anadante out of Briddlesford Oberons Lily (Mammary VG86)

**Briddlesford Foxgloves James (A2/A2)** born 11.11.14 by Tredinney Yogis Prince out of Briddlesford Oaks Foxglove 6 (VG89, Feet and Legs EX91)