



The English Guernsey Cattle Society Newsletter

Michaelmas Cottage, Meadwell Farm, Kelly, Lifton, Devon, PL16 0HJ

Tel: 01822 870727 e-mail: office@guernseycattle.com www.guernseycattle.com

Spring 2015

Dear Member,

It would appear that Spring has sprung and with the beautiful weather we are experiencing at the moment I am sure we are all well ahead of schedule with our groundwork. As is the way with farmers, we'll all be demanding rain sometime soon, just remember what happened the last time "drought" was mentioned in national terms in 2012 so be careful what you wish for. Now would seem a good time to be looking ahead at the bulls from which the Society will be collecting semen in the forthcoming year.

At present we have Tredinney Grumpys Echo available to be followed by Bourton Laredos Fernando – information on both is available in the Newsletter and both are available NOW.

The American bull available to you at the moment is Golden J Laredo Gotcha, he is available in conventional and sexed form, although supplies are limited as sexed semen was only collected for the Society – **SO DO NOT LINGER IF YOU ARE INTERESTED.**

At the Mainland Future of the Breed Meeting on the 23rd April it was decided to collect semen from more Mainland bulls rather than import quite so much American semen, this decision was prompted by two factors, firstly, the continued fall in Fat and Protein in the USA bulls, this trait is probably one of the most important in the Guernsey breed and the loss of it is a continual matter of concern to our members, and secondly, the increasing costs of importing semen to the Society. To this end, another 4 bulls will be collected in 2015, both on farm and on Centre. The first 2 of these will be promoted in the Summer Newsletter.

SEMEN ORDERS

In recent weeks we have been informed by UKSS of additional charges that will be made to the Society for orders that are required by the member prior to UKSS routine delivery time of 14 days.

There will be an additional charge of £25.00 for the delivery of orders that are required prior to the 14 day window allowed. If delivery is required on a Saturday there will be a further charge of £15.00. Both of these charges, if incurred, will be passed on to the member – I would respectively suggest that you keep a careful eye on your semen stocks and place your orders in good time so these extra charges will not be necessary.

BULL REGISTRATION

I would remind members that bulls will not be registered by the Society until we have received hair samples so that the bull may be DNA matched to his Dam and tested for his A2 status. In addition in future a further hair sample will be requested from the bull calf which will be kept on file and used in due course for Genomic testing.

FUTURE SAVINGS FOR OUR MEMBERS

We as a Society are ever mindful of the stressful times that our Levy paying members are experiencing at the moment and in an effort to reward the bigger herds that are, after all, the backbone of this Society, we are introducing an initiative whereby you can make a substantial saving on semen just by continuing, in most cases, to do what you have always done.

It's not "POUNDS MAKE PRIZES" its "REGISTRATIONS MAKE DISCOUNT ON SEMEN" – all you have to do to qualify, if you have not already done so, is make a start on registering your calves through Telereg, Webreg or through the Office on time and certainly well within the 60 day window and you will receive £1 discount for every registration you make. If you register 35 calves in a year you will receive a discount of £35 off your semen – it's that simple. To qualify you need to have registered all your calves in any one year by the 28th February of the following year, **for 2015 only we are offering an amnesty to the 1st July.**

IT'S THAT EASY – SO LET'S GET UP TO DATE!!

**PLEASE NOTE AMENDMENT TO OFFICE ADDRESS AS OF THE 1ST MAY 2015
THE ENGLISH GUERNSEY CATTLE SOCIETY, MICHAELMAS COTTAGE,
MEADWELL FARM, KELLY, LIFTON, DEVON, PL16 0HJ.**

TELEPHONE NUMBER AND EMAIL ADDRESS REMAIN UNCHANGED

A few of you are still sending correspondence to Scotsbridge House. The Society left these premises In January 2013. Although post is forwarded on eventually, please make sure that ALL correspondence is sent to the address above.

SPONSORSHIP OF CALF CLASSES IN 2015

The Society is very fortunate to have secured sponsorship in the form of Calf Rearing Compound from GLW Feeds. All of the following shows have been informed of this sponsorship. Although GLW Feeds will be present at a couple of the following shows for logistical reasons, the actual bags of feed will be allocated en bloc at the end of the show season in October.

At the following shows the winning competitor will receive 3 bags of cake and the reserve, 2 bags:-

Devon County,
SW Dairy Show,
All Breeds Calf Show,
and also Honiton, Okehampton and Frome one day shows.

At the following shows the winning competitor will receive 2 bags of cake and the reserve 1 bag:-

Royal Bath and West Show,
Royal Cornwall Show,
National Dairy Show,
The SW Calf Show,
The Devon Calf Show
and also North Somerset, Heathfield, Stithians,
Totnes and Edenbridge one day shows.

SHOWS IN 2015

Photographs of Champions

In 2014 there was some confusion about who should pay for the official photograph of the Breed Champion at the major Shows. Council have agreed on the following:-

The English Guernsey Cattle Society will pay for the official photo of the Breed Champion at the following shows only;

The Royal Cornwall Show,
The National Dairy Show at The NEC,
The SW Dairy Show.

The funding of the photos taken at The All Britain All Breeds Calf Show is already covered by the initial funding provided by this Society to the Coloured Breeds Alliance.

I have contacted both Lucinda Morgan (Royal Cornwall, The SW Dairy Show and The All Breeds Calf Show) and Jane Steel (National Dairy Show) so they are both aware of this decision.

DATES FOR YOUR DIARY

The Society Field Days
and Annual General Meeting
will be hosted by our President,
Mr Peter Richardson
on the 8th and 9th September 2015
in Cheshire – full details to follow.

**Please Note
CHANGE OF DATE
FOR COUNCIL
MEETING**

NOW 23rd June 2015

**At the Jolly Huntsman,
Kington St Michael,
moved from the 30th June.**



BVD Tag and Test supplied by Nordic Star

- ✓ Easy-to-use tamper proof ear tags
- ✓ Tested in our UKAS accredited labs (NML)
- ✓ Defra / DARD approved tags or management tags
- ✓ Tag from £1.40
- ✓ Tag & Test from £4.50



Did you know?... It costs more to keep a PI (persistently infected) calf than to identify it and take it out

Should the vial become damaged or missing in transit
WE WILL SUPPLY A FREE REPLACEMENT!

**Call Nordic Star on 0800 731 9465
www.nordicstar.co.uk**

Date issued: April 2015
Breeder: D W, R J & J R Warren
Owner: Tredinney Farm St. Buryan
Penzance, TR19 6HX

TREDINNEY GRUMPYS ECHO 43838 A2/A2

Rel	Milk	BF	PT	F%	P%	F + P	F&L	Mam	SCC	Fert	GMI	DS	PLI
pa	143	5.8	4.0	-0.01	-0.01	9.8	0.8	1.8	-3	0.3	125	0.8	166

Born: 10 November 2012
GMI: 125

GOLDEN J RONALD GRUMPY 604960

Rel	Milk	BF	PT	F%	P%	F + P	F&L	Mam	SCC	Fert	GMI	DS	PLI
90	114	6.6	4.5	0.02	0.01	11.1	0.2	2.3	1	0.0	162	0.7	183

MARODORE GOLIATHS RONALD 603218

Rel	Milk	BF	PT	F%	P%	F + P	F&L	Mam	SCC	Fert	GMI	DS	PLI
92	114	1.3	1.5	-0.07	-0.04	2.8	-0.5	0.7	7	7.0	178	0.2	70

ROZELYN PATMAR P GOLIATH 600974

Rel	Milk	BF	PT	F%	P%	F + P	F&L	Mam	SCC	Fert	GMI	DS	PLI
85	-41	2.0	-1.1	0.07	0.00	0.9	-1.4	-0.1	-1.1	15.4	387	-0.6	273

TREDINNEY ANDANTES ECLIPSE 11 448010 EX92(5YR) 2gensEX

Rel	Milk	BF	PT	F%	P%	F + P	F&L	Mam	SCC	Fert	GMI	DS	PLI
68	172	5.0	3.5	-0.03	-0.02	8.5	1.3	1.2	-6	*	88	0.9	148

GOLDEN J OAK GRINCH 3070844

Rel	Milk	BF	PT	F%	P%	F + P	F&L	Mam	SCC	Fert	GMI	DS	PLI
66	216	7.4	6.6	-0.05	-0.01	14.0	0.7	1.6	0	-8.7	-75	*	-55

MARODORE PENDERES RONETTE 3000058

Rel	Milk	BF	PT	F%	P%	F + P	F&L	Mam	SCC	Fert	GMI	DS	PLI
70	258	-1.4	5.2	-0.24	-0.05	3.8	-0.5	-0.8	16	0.0	-13	*	-89

GOLDEN J RONALD GRUMPY 604960

Rel	Milk	BF	PT	F%	P%	F + P	F&L	Mam	SCC	Fert	GMI	DS	PLI
90	114	6.6	4.5	0.02	0.01	11.1	0.2	2.3	1	0.0	162	0.7	183

TREDINNEY YOGIS ADANTE 43613

Rel	Milk	BF	PT	F%	P%	F + P	F&L	Mam	SCC	Fert	GMI	DS	PLI
96	0	2.0	2.1	0.03	0.04	4.1	0.8	1.7	-10	0.8	136	1.8	95

JENSGOLDEN PROKING ROYAL OAK 6022216

Rel	Milk	BF	PT	F%	P%	F + P	F&L	Mam	SCC	Fert	GMI	DS	PLI
98	177	8.3	6.0	-0.01	0.00	14.3	0.2	2.0	-5	-17.8	-266	2.9	-181

GOLDEN J RONALD GRUMPY 604960

Rel	Milk	BF	PT	F%	P%	F + P	F&L	Mam	SCC	Fert	GMI	DS	PLI
90	114	6.6	4.5	0.02	0.01	11.1	0.2	2.3	1	0.0	162	0.7	183

TREDINNEY LUXURYS ANNE 5 430543

Rel	Milk	BF	PT	F%	P%	F + P	F&L	Mam	SCC	Fert	GMI	DS	PLI
75	-162	-3.2	-1.2	0.13	0.13	-4.4	0.0	0.5	0	5.2	153	1.5	37

ELJO MAGIC GLENNIS 3034184

Rel	Milk	BF	PT	F%	P%	F + P	F&L	Mam	SCC	Fert	GMI	DS	PLI
48	232	5.1	7.3	-0.11	-0.02	12.3	0.0	0.4	*	-4.6	-4	*	55

TREDINNEY ANDANTES ECLIPSE 11 448010 EX92(5YR) 2gensEX

Rel	Milk	BF	PT	F%	P%	F + P	F&L	Mam	SCC	Fert	GMI	DS	PLI
68	172	5.0	3.5	-0.03	-0.02	8.5	1.3	1.2	-6	*	88	0.9	148

TREDINNEY MAYPENNANTS ANDY PANDY 43530

Rel	Milk	BF	PT	F%	P%	F + P	F&L	Mam	SCC	Fert	GMI	DS	PLI
86	-227	-9.3	-4.9	0.03	0.06	-14.2	-1.0	2.2	5	-2.3	-158	1.0	-193

EDGEWATER MEADOWS YOGIBEAR 604917

Rel	Milk	BF	PT	F%	P%	F + P	F&L	Mam	SCC	Fert	GMI	DS	PLI
97	171	9.3	5.8	0.02	0.00	15.1	1.5	2.8	-2	-4.5	105	1.7	128

TREDINNEY ANDANTES ECLIPSE 11 448010 EX92(5YR) 2gensEX

Rel	Milk	BF	PT	F%	P%	F + P	F&L	Mam	SCC	Fert	GMI	DS	PLI
68	172	5.0	3.5	-0.03	-0.02	8.5	1.3	1.2	-6	*	88	0.9	148

TREDINNEY YOGIS ADANTE 43613

Rel	Milk	BF	PT	F%	P%	F + P	F&L	Mam	SCC	Fert	GMI	DS	PLI
96	0	2.0	2.1	0.03	0.04	4.1	0.8	1.7	-10	0.8	136	1.8	95

TREINNEY LUXURYS ANNE 5 430543

Rel	Milk	BF	PT	F%	P%	F + P	F&L	Mam	SCC	Fert	GMI	DS	PLI
75	-162	-3.2	-1.2	0.13	0.13	-4.4	0.0	0.5	0	5.2	153	1.5	37

TREDINNEY ANDANTES ECLIPSE 11 448010 EX92(5YR) 2gensEX

Rel	Milk	BF	PT	F%	P%	F + P	F&L	Mam	SCC	Fert	GMI	DS	PLI
68	172	5.0	3.5	-0.03	-0.02	8.5	1.3	1.2	-6	*	88	0.9	148

TREDINNEY ANDY PANDYS ECLIPSE 6442910 EX92(4) (8YR)

Rel	Milk	BF	PT	F%	P%	F + P	F&L	Mam	SCC	Fert	GMI	DS	PLI
70	-37	-5.1	-2.2	-0.03	0.02	-7.3	0.5	0.0	5	0.6	-59	-0.5	24

TREINNEY LUXURYS ANNE 5 430543

Rel	Milk	BF	PT	F%	P%	F + P	F&L	Mam	SCC	Fert	GMI	DS	PLI
75	-162	-3.2	-1.2	0.13	0.13	-4.4	0.0	0.5	0	5.2	153	1.5	37

TREDINNEY ANDANTES ECLIPSE 11 448010 EX92(5YR) 2gensEX

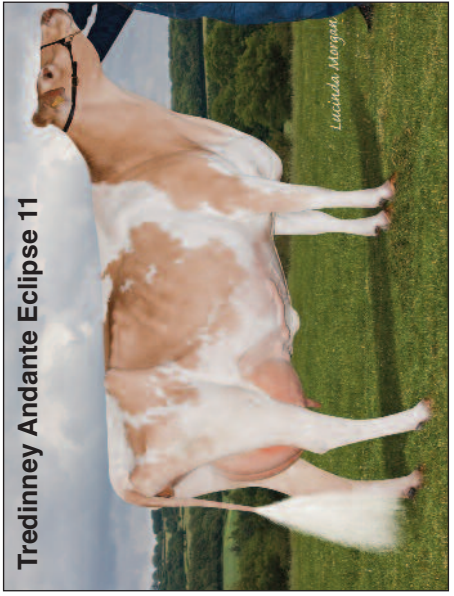
Rel	Milk	BF	PT	F%	P%	F + P	F&L	Mam	SCC	Fert	GMI	DS	PLI
68	172	5.0	3.5	-0.03	-0.02	8.5	1.3	1.2	-6	*	88	0.9	148

TALLYRANDS ECLIPSE 424291 GP81

Rel	Milk	BF	PT	F%	P%	F + P	F&L	Mam	SCC	Fert	GMI	DS	PLI
75	-284	-12.9	-9.2	0.05	0.06	-22.1	10.5	-0.6	6	5.5	-63	-2.6	66

EDGEWATER MEADOWS YOGIBEAR 604917

Rel	Milk	BF	PT	F%	P%	F + P	F&L	Mam	SCC	Fert	GMI	DS	PLI
97	171	9.3	5.8	0.02	0.00	15.1	1.5	2.8	-2	-4.5	105	1.7	128



Tredinney Andante Eclipse 11

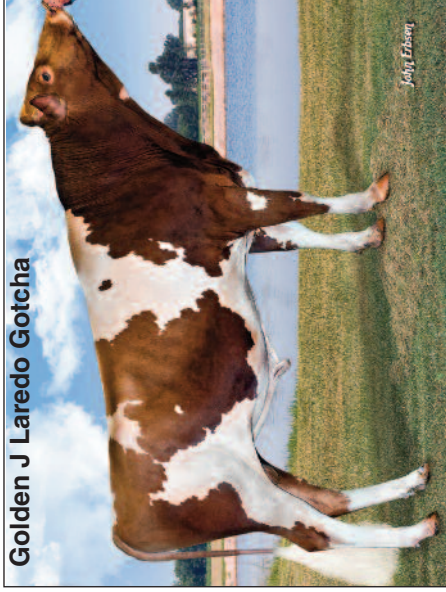
Semen available
£11.00 per straw
£10.00 Levy paying members
for composite order of more
than 20 straws
£1 discount for composite-
orders of 30 straws and over.
Surcharge of £1 per straw for
orders delivered to Genus.

Date issued: April 2015
 Breeder: T & L Jenson, Amery, WI,
 Owner: Select Sires

GOLDEN J LAREDO GOTCHA 68032698 A2/A2

Rel	Milk	BF	PT	F%	P%	F + P	F&L	Mam	SCC	Fert	GMI	DS	PLI
pa	230	13.4	6.5	0.04	-0.02	19.9	0.2	2.2	4	-5.2	79	0.7	76

Born: 22 December 2012
GMI: 79



Golden J Laredo Gotcha

MARFRED MAXIE 603635													
Rel	Milk	BF	PT	F%	P%	F + P	F&L	Mam	SCC	Fert	GMI	DS	PLI
74	268	5.4	4.7	-0.13	-0.07	10.1	-1.3	1.2	5	-12.1	-254	1.2	-203

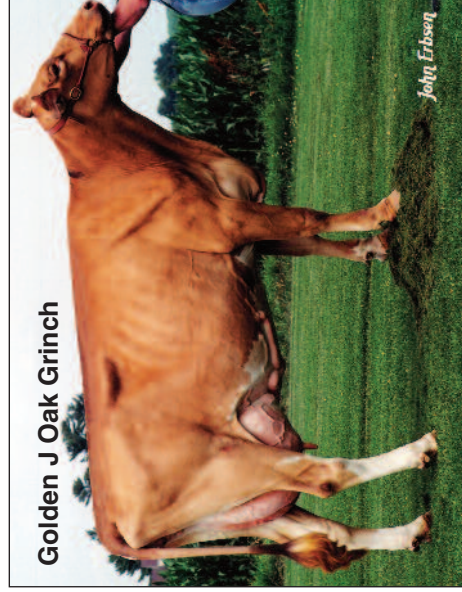
OAK KNOB NUT LAVISH 3073678													
Rel	Milk	BF	PT	F%	P%	F + P	F&L	Mam	SCC	Fert	GMI	DS	PLI
38	67	8.2	2.0	0.09	-0.01	10.2	0.7	2.0	*	2.3	30	*	157

OAK KNOB MAXIE LAREDO 68018049

Rel	Milk	BF	PT	F%	P%	F + P	F&L	Mam	SCC	Fert	GMI	DS	PLI
93	215	18.0	5.1	0.13	-0.03	23.1	-0.5	2.2	7	-6.9	48	0.3	48

GOLDEN J CHALLENGE GRACIE 68021958

Rel	Milk	BF	PT	F%	P%	F + P	F&L	Mam	SCC	Fert	GMI	DS	PLI
49	246	8.9	7.8	-0.05	-0.02	16.7	0.9	2.1	0	-3.6	110	*	103



Golden J Oak Grinch

IDLE GOLD E CHALLENGE - ET 604268													
Rel	Milk	BF	PT	F%	P%	F + P	F&L	Mam	SCC	Fert	GMI	DS	PLI
92	91	8.6	4.3	0.07	0.02	12.9	0.9	0.0	-5	-0.1	137	0.7	153

GOLDEN J OAK GRINCH 3070844													
Rel	Milk	BF	PT	F%	P%	F + P	F&L	Mam	SCC	Fert	GMI	DS	PLI
66	216	7.4	6.6	-0.05	-0.01	14.0	0.7	1.6	0	-8.7	-75	*	-55

TAG LANE IDEAL SHARP 601474

Rel	Milk	BF	PT	F%	P%	F + P	F&L	Mam	SCC	Fert	GMI	DS	PLI
76	103	-2.0	1.0	-0.12	-0.04	-1.0	-0.9	1.5	17	-8.6	-240	0.6	-197

LAMBRECHT PERFECTO MINNIE 3012544

Rel	Milk	BF	PT	F%	P%	F + P	F&L	Mam	SCC	Fert	GMI	DS	PLI
57	192	6.1	5.6	-0.06	-0.02	11.7	-0.9	0.9	-9	-3.8	13	*	-90

OAK KNOB LUKE NUTRAGEOUS 604320

Rel	Milk	BF	PT	F%	P%	F + P	F&L	Mam	SCC	Fert	GMI	DS	PLI
*	*	*	*	*	*	*	*	*	*	*	*	*	*

OAK KNOB NITRO LUJELLA 3059348

Rel	Milk	BF	PT	F%	P%	F + P	F&L	Mam	SCC	Fert	GMI	DS	PLI
45	-10	9.2	0.4	0.17	0.01	9.6	-0.1	0.2	5	-4.7	-22	*	24

Semen available £11.00 per straw

£10.00 Levy paying members for composite order of more than 20 straws
 £1 discount for composite orders of 30 straws and over.
 Surcharge of £1 per straw for orders delivered to Genus
 Sexed semen available @ £30.00 per straw

ROZELYN PATMAR EL GATO 602230

Rel	Milk	BF	PT	F%	P%	F + P	F&L	Mam	SCC	Fert	GMI	DS	PLI
70	-193	-7.7	-2.5	0.03	0.07	-10.2	0.4	0.4	-21	2.4	46	-0.7	146

PAFARMS FORTRESS CASSANDRA 3042855

Rel	Milk	BF	PT	F%	P%	F + P	F&L	Mam	SCC	Fert	GMI	DS	PLI
61	325	7.1	7.6	-0.15	-0.05	14.7	0.7	-0.3	-3	-4.6	-40	*	-45

JENSGOLDEN PROKING ROYAL OAK 6022216

Rel	Milk	BF	PT	F%	P%	F + P	F&L	Mam	SCC	Fert	GMI	DS	PLI
98	177	8.3	6.0	-0.01	0.00	14.3	0.2	2.0	-5	-17.8	-266	2.9	-181

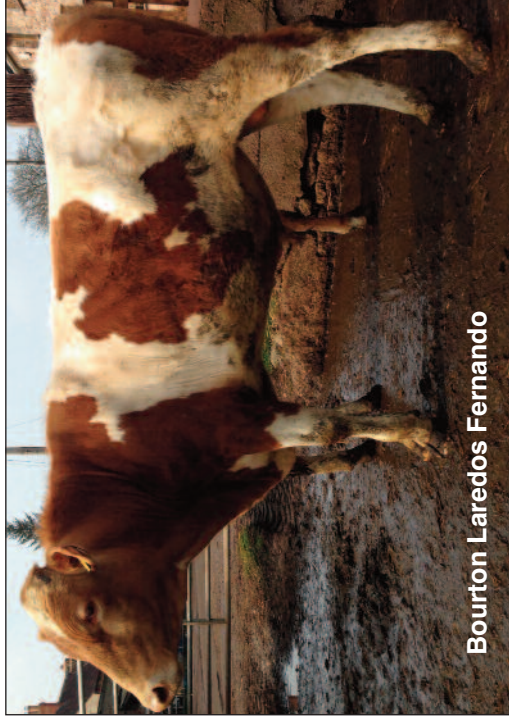
ELJO MAGIC GLENNIS 3034184

Rel	Milk	BF	PT	F%	P%	F + P	F&L	Mam	SCC	Fert	GMI	DS	PLI
48	232	5.1	7.3	-0.11	-0.02	12.3	0.0	0.4	*	-4.6	-4	*	55

Date Issued: April 2015
 Owner/ P C & Mrs C G Cox
 Breeder: Meadwell Farm Kelly,
 Lifton Devon, PL16 0HU

BOURTON LAREDOS FERNANDO 43850 A2/A2													
Rel	Milk	BF	PT	F%	P%	F + P	F&L	Mam	SCC	Fert	GMI	DS	PLI
pa	115	13.6	6.3	0.17	0.06	19.9	-0.1	1.5	-1	-6.4	79	0.4	98

Born: 22 October 2013
GMI: 79



Bourton Laredos Fernando

MARFRED MAXIE 603635						
Rel	Milk	BF	PT	F%	P%	F + P
74	268	5.4	4.7	-0.13	-0.07	10.1
F&L	Mam	SCC	Fert	GMI	DS	PLI
-1.3	1.2	5	-12.1	-254	1.2	-203

TAG LANE IDEAL SHARP 601474													
Rel	Milk	BF	PT	F%	P%	F + P	F&L	Mam	SCC	Fert	GMI	DS	PLI
76	103	-2.0	1.0	-0.12	-0.04	-1.0	-0.9	1.5	17	-8.6	-240	0.6	197

LAMBRECHT PERFECTO MINNIE 3012544						
Rel	Milk	BF	PT	F%	P%	F + P
57	192	6.1	5.6	-0.06	-0.02	11.7
				-0.9	0.9	-9
				-3.8	13	* -90

OAK KNOB NUT LAVISH 3073678						
Rel	Milk	BF	PT	F%	P%	F + P
38	67	8.2	2.0	0.09	-0.01	10.2
F&L	Mam	SCC	Fert	GMI	DS	PLI
0.7	2.0	*	2.3	30	*	157

OAK KNOB LUKE NUTRAGEOUS 604320													
Rel	Milk	BF	PT	F%	P%	F + P	F&L	Mam	SCC	Fert	GMI	DS	PLI
*	*	*	*	*	*	*	*	*	*	*	*	*	*

OAK KNOB NITRO LUELLA 3059348						
Rel	Milk	BF	PT	F%	P%	F + P
45	-10	9.2	0.4	0.17	0.019	-6
				-0.1	0.2	5
				-4.7	-22	* 24

OAK KNOB MAXIE LAREDO 68018049													
Rel	Milk	BF	PT	F%	P%	F + P	F&L	Mam	SCC	Fert	GMI	DS	PLI
93	215	18.0	5.1	0.13	-0.03	23.1	-0.5	2.2	7	-6.9	48	0.3	48

BOURTON B FIONA 5 446435 EX90 (5YR)													
Rel	Milk	BF	PT	F%	P%	F + P	F&L	Mam	SCC	Fert	GMI	DS	PLI
68	14	9.2	7.5	0.20	0.15	16.7	0.3	0.8	-9	-5.8	110	0.5	148
Lac	Age	M	D	Bf%	Bf	Pt%	Pt	Pi					
1	2/6	5975	305	5.07	303	3.90	233	115					
2	3/7	6489	305	5.40	350	3.84	249	121					
3	4/8	6831	287	6.54	447	3.78	258	135					
4	5/7	6835	272	5.88	402	3.71	254	109					
5	6/6	7702	273	5.78	446	3.71	286	107					

TROTACRE LORAL TILLER 603341													
Rel	Milk	BF	PT	F%	P%	F + P	F&L	Mam	SCC	Fert	GMI	DS	PLI
83	369	10.2	7.6	-0.13	-0.07	17.8	1.1	1.0	16	-17.3	-310	2.6	266

RIVERWOOD GLACIER KUKU 3052931													
Rel	Milk	BF	PT	F%	P%	F + P	F&L	Mam	SCC	Fert	GMI	DS	PLI
62	-40	7.0	3.3	0.16	0.08	10.3	-0.2	0.3	-6	-3.1	74	*	49

RIVERWOOD TILLER KHAN 605000						
Rel	Milk	BF	PT	F%	P%	F + P
96	-45	14.9	3.4	0.31	0.09	18.3
				0.1	0.5	-8
				-14.2	-115	1.4
				-47		

Semen available
£11.00 per straw
 £10.00 Levy paying members for composite order of more than 20 straws
 £1 discount for composite orders of 30 straws and over.
 Surcharge of £1 per straw for orders delivered to Genus.

BOURTON B FIONA 428664 VG85(4YR)													
Rel	Milk	BF	PT	F%	P%	F + P	F&L	Mam	SCC	Fert	GMI	DS	PLI
74	-193	-8.3	-2.6	0.06	0.12	-10.9	0.1	0.8	-6	0.9	-2	-0.9	111
Lac	Age	M	D	Bf%	Bf	Pt%	Pt	Pi					
1	2/6	4605	305	4.88	225	3.74	172	115					
3	4/8	5791	305	4.84	280	3.59	208	114					
4	5/10	6647	305	4.74	315	3.50	233	117					
5	7/0	6178	305	4.70	291	3.50	216	98					
6	8/2	6488	305	4.76	309	3.72	241	103					
7	9/3	6857	305	4.78	328	3.73	256	106					

GOLDEN WHEY MAGIC ENTICER 602480													
Rel	Milk	BF	PT	F%	P%	F + P	F&L	Mam	SCC	Fert	GMI	DS	PLI
97	-44	-10.3	-1.9	-0.15	-0.01	-12.2	0.4	1.6	-12	-6.9	-234	0.2	35

BICKFIELD FIONA 8 413669						
Rel	Milk	BF	PT	F%	P%	F + P
72	-476	-19.2	-13.10	120.13	-32.3	0.0
				0.0	0.0	8
				8.3	-38	* -100
1	3/2	3604	305	5.14	185	3.62
2	4/3	4938	305	5.08	251	3.59
3	5/4	4367	297	5.07	221	3.81
				131	85	
				177	107	
				166	103	



8th & 9th July 2015

NEC, Birmingham



The best showing facilities in the UK

- Climate controlled Livestock Hall
- Excellent milking, washing & clipping facilities
- Excellent showing platform to advertise your herd to national and international visitors

If you require anymore information visit

www.livestockevent.co.uk

or contact sianmercerc@rabdf.co.uk

 Like us on Facebook - National Dairy Show



Image used by permission from Hoards Dairyman Magazine, Fort Atkinson, Wis, USA

