

Date Issued: August 2019
 Breeder: J A & J H Mann
 Owner GB Ellis & Son, Boscarne,
 St Buryan, TR19 6HR

TREWEY YORKIES FREDDIE 43936 A2/A2																
Source	Rel	Milk	F	P	F%	P%	F+P	F&L	Mam	SCC	Fert	GMI	DS	Stat	Loco	PLI
PA	33	105	6.5	4.3	0.03	0.01	10.8	1.3	1.9	0	0.7	175	0.5	0.3	1.2	156

Sire Status: **Young**
 Born: 30 Aug 2017
 GMI: 175



Bull

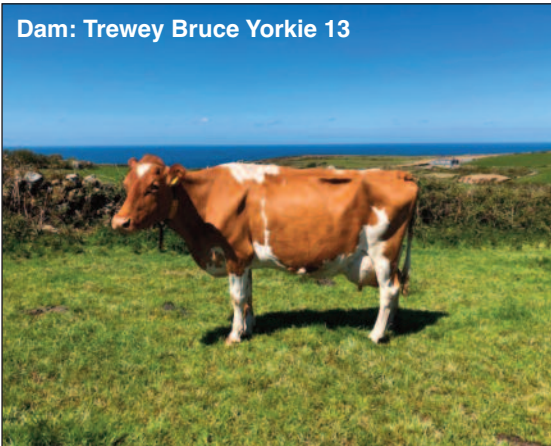
Trewey Yorkies Freddie at 10 months old

OAK KNOB MAXIE LAREDO 68018049 A1/A2																
Source	Rel	Milk	F	P	F%	P%	F+P	F&L	Mam	SCC	Fert	GMI	DS	Stat	Loco	PLI
AHDB	94	170	17.2	5.3	0.13	0.00	22.5	-0.3	2.2	10	-5.0	137	0.3	0.6	-1.0	68

BOURTON B FIONA 5 446435 EX90 (5YR) 2gens VG/EX DM, CME																
Source	Rel	Milk	F	P	F%	P%	F+P	F&L	Mam	SCC	Fert	GMI	DS	Stat	Loco	PLI
AHDB	72	89	11.1	8.8	0.26	0.18	19.9	0.4	0.8	-8	-3.2	205	0.6	0.5	0.4	115

BOURTON LAREDOS FERNANDO 43850 A2/A2																
Source	Rel	Milk	F	P	F%	P%	F+P	F&L	Mam	SCC	Fert	GMI	DS	Stat	Loco	PLI
AHDB	76	-30	9.9	2.7	0.20	0.07	12.6	0.4	1.8	3	-0.5	191	0.4	0.2	0.0	138

TREWEY BRUCE YORKIE 13 453757 EX90 (5YR) 4gens VG/EX																
Source	Rel	Milk	F	P	F%	P%	F+P	F&L	Mam	SCC	Fert	GMI	DS	Stat	Loco	PLI
AHDB	57	239	3.0	5.9	-0.15	-0.05	8.9	2.2	1.9	-3	1.8	158	0.5	0.4	2.3	173
Lac	Age	Milk	Days	Fat %	Fat	Prt%	Prt	Pi								
1	3/0	5976	305	4.47	267	3.59	214	100								
2	4/0	8398	305	4.76	399	3.49	293	141								



Dam: Trewey Bruce Yorkie 13

TREWEY SHEILAS BRUCE 43778 EX91 (3YR)																
Source	Rel	Milk	F	P	F%	P%	F+P	F&L	Mam	SCC	Fert	GMI	DS	Stat	Loco	PLI
AHDB	81	8	0.0	-1.5	-0.01	-0.03	-1.5	2.0	2.0	-4	2.5	90	0.1	-0.6	2.1	104

TREWEY YORKIE 12 450778 VG88 (4YR) 3gens VG/EX																
Source	Rel	Milk	F	P	F%	P%	F+P	F&L	Mam	SCC	Fert	GMI	DS	Stat	Loco	PLI
AHDB	68	430	5.4	12.1	-0.28	-0.07	17.5	1.7	1.2	-1	0.5	177	0.4	0.5	1.9	181
Lac	Age	Milk	Days	Fat %	Fat	Prt%	Prt	Pi								
1	2/11	6914	305	4.17	289	3.41	235	106								
2	4/2	8250	305	4.24	350	3.40	281	109								
3	5/9	6992	305	4.25	297	3.42	239	94								

SEMEN AVAILABLE
 from end of August
 Price £7.70 per straw
 (£6.70 per straw for Levy members)
 regardless of size of order
 + handling and delivery.
 Delivery charges to Genus
 and other third parties at cost

MARFRED MAXIE 603635																
Source	Rel	Milk	F	P	F%	P%	F+P	F&L	Mam	SCC	Fert	GMI	DS	Stat	Loco	PLI
AHDB	75	227	5.6	4.3	-0.04	-0.04	9.9	-1.6	1.2	5	-9.5	-136	1.3	1.7	-0.7	-162

OAK KNOB NUT LAVISH 3073678																
Source	Rel	Milk	F	P	F%	P%	F+P	F&L	Mam	SCC	Fert	GMI	DS	Stat	Loco	PLI
CDCB	43	10	5.7	0.5	0.09	0.00	6.3	0.8	1.6	6	2.7	171	*	0.2	*	102

RIVERWOOD TILLER KHAN 605000 A2/A2																
Source	Rel	Milk	F	P	F%	P%	F+P	F&L	Mam	SCC	Fert	GMI	DS	Stat	Loco	PLI
AHDB	96	-111	10.20	2.0	0.19	0.05	10.4	0.2	0.6	-5	-11.8	-75	1.5	1.5	0.1	-158

BOURTON B FIONA 428664 VG85(4YR) GDM																
Source	Rel	Milk	F	P	F%	P%	F+P	F&L	Mam	SCC	Fert	GMI	DS	Stat	Loco	PLI
AHDB	74	-255	-11.0	-3.50	140.14	-14.50	1.0	0.8	-6	3.1	19	-0.8	-0.9	0.5	68	
8	10/6	6094	305	4.98	304	3.90	238	101								

Source:
 PA = Parent Average for Young bull
 AHDB = AHDB published proof
 CDCB-G = CDCB genomic proof of young bull (converted)
 CDCB = CDCB proof (converted)
 CDN = CDN proof (converted)

LES JAONNETS CARAS AMIR 20075002 A2/A2																
Source	Rel	Milk	F	P	F%	P%	F+P	F&L	Mam	SCC	Fert	GMI	DS	Stat	Loco	PLI
AHDB	97	123	2.7	1.4	-0.03	-0.03	4.1	1.9	2.4	-10	1.2	113	0.3	0.3	2.7	29

TREWEY SHIELA 12 433059 CSR EX90(2) (6YR) DM, GDM																
Source	Rel	Milk	F	P	F%	P%	F+P	F&L	Mam	SCC	Fert	GMI	DS	Stat	Loco	PLI
AHDB	74	-66	-11.70	-0.7	-0.05	0.07	-12.4	1.9	0.9	0	0.0	8	0.4	0.3	1.6	-1
4	6/3	6746	305	4.41	297	3.54	238	107								
5	7/5	7101	305	4.55	323	3.50	249	122								
6	8/7	7674	305	4.64	356	3.45	265	124								
7	9/7	7916	305	4.47	354	3.46	274	122								

LORELEIS ADVENT LAMAR 43677 VG87 (2YR)																
Source	Rel	Milk	F	P	F%	P%	F+P	F&L	Mam	SCC	Fert	GMI	DS	Stat	Loco	PLI
AHDB	86	409	11.0	9.0	-0.15	-0.06	21.9	1.7	1.2	0	1.6	233	0.1	0.1	2.3	260

TREWEY YORKIE 11 446647 EX92 (3) (7YR) 2gens EX																
Source	Rel	Milk	F	P	F%	P%	F+P	F&L	Mam	SCC	Fert	GMI	DS	Stat	Loco	PLI
AHDB	71	113	-2.45	-0.13	0.04	2.8	1.3	1.0	-5	1.6	110	0.3	0.3	0.9	115	
1	3/3	5483	305	4.45	244	3.61	198	94								
2	4/3	6677	305	4.48	299	3.69	246	111								
3	5/11	7140	305	4.62	330	3.80	271	104								
4	7/0	5577	305	4.42	247	3.89	217	79								